

213-132, 213-133, 213-134

Desk Mount Rotary Panel RF Remote Controller



213-132
1 Zone Dimming



213-133
1 Zone CCT



213-134
1 Zone RGB

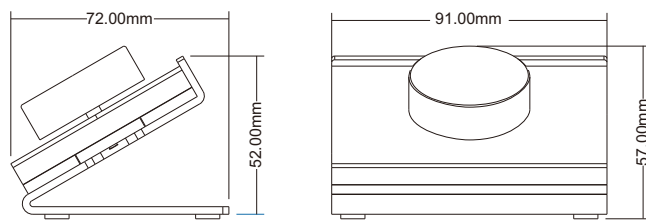
- Apply to single color, dual color or RGB LED RF controller.
- Rotate knob to change RGB color, color temperature or brightness, support long press or twice click operation.
- Each remote can match one or more receiver.
- CR2032 battery powered.
- Desk mount, removeable anywhere easily.

CE RoHS

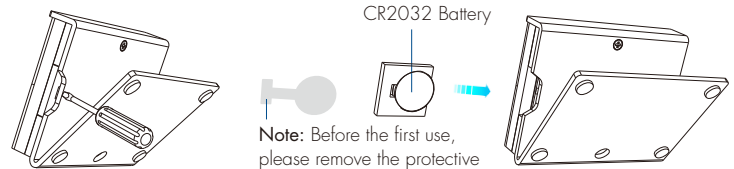
Technical Parameters

Input and Output		Safety and EMC		Environment	
Output signal	RF 2.4GHz	EMC standard	EN IEC 55015/EN IEC 61547 ETSI EN 301 489-1/-17	Operation temperature	Ta: -30 °C ~ +55 °C
Working voltage	3VDC(CR2032)	Safety standard	EN 61347-1/-2	IP rating	IP20
Working current	<5mA	Radio Equipment	ETSI EN 300 440 ETSI EN 300 328	Package	
Standby current	<10μA	Certification	CE RoHS	Size	L110.5 x W72 x H29.5mm
Standby time	1 year	Warranty	5 years	Gross weight	0.118kg
Remote distance	30m(Barrier-free space)				

Mechanical Structures and Installations



Replace battery:



Match Remote Control (two match ways)

End user can choose the suitable match/delete ways. Two options are offered for selection:

Use the controller's Match key

Match:
Short press match key, immediately push the knob.
The LED indicator fast flash a few times means match is successful.

Delete:
Press and hold match key for 5s to delete all match,
The LED indicator fast flash a few times means all matched remotes were deleted.

Use Power Restart

Match:
Switch off the power, then switch on power, repeat again.
Immediately push the knob 3 times.
The light blinks 3 times means match is successful.

Delete:
Switch off the power, then switch on power, repeat again.
Immediately push the knob 5 times.
The light blinks 5 times means all matched remotes were deleted.

Knob Function

- 213-132 Single color dimming remote



- Push: Turn on or off light.
After turn on light:
 - Rotate: Rotate knob to adjust brightness(2.5 turns, 50 levels).
 - Long push(1-6s): Continuous 256 levels brightness adjustment.

- 213-133 Color temperature remote



- Push: Turn on or off light.
After turn on light:
 - Rotate: Rotate knob to change color temperature or brightness (2.5 turns, 50 levels).
 - Push twice: Switch between color temperature or brightness adjustment.
 - Long push(1-6s): Continuous 256 levels brightness adjustment.

- 213-134 RGB remote



- Push: Turn on or off light.
After turn on light:
 - Rotate: Rotate knob to change RGB color (3 turns, 60 colors) or brightness (2.5 turns, 50 levels).
 - Push twice: Switch between RGB color or brightness adjustment.
 - Long push(1-6s): Continuous 256 levels brightness adjustment.

Safety Information

1. Read all instructions carefully before you begin this installation.
2. When installing battery, pay attention to the battery positive and negative polarity.
A long time without the remote control, remove the battery.
When remote distance becomes smaller and insensitive, replace the battery.
3. If no response from the receiver, please re-match the remote.
4. Gently handle remote, beware of falling.
5. For indoor and dry location use only.