

Features

- Insaver Slim is a ceiling recessed LED downlight (IP44 from the front), with integrated PIR sensor with time (up to 8 mins) and daylight lux level settings. Die-cast aluminium body, loop in loop out connector for quick installation, Non dimmable LED driver, 9.5W; 1200lm; 126lm/W; 4000K; UGR <19 with shallow product depth 50mm. Meets TP(a) requirements.

Product Overview

Product name	Insaver Slim UGR19 IP44 175 1200lm 840 PIR
Technology	LED
Cap/Base	N/A
Housing	Aluminium
Mount	Ceiling recessed mounting
E-number FI	4278518
Fixture luminous flux (lm)	1200
Luminaire efficacy (lm/W)	126
Colour temperature (K)	4000
Light colour	Neutral White
CRI (Ra)	80
Colour Variation Initial (SDCM)	3
Glare control	< 19
Photobiological Risk Group	RG1
Total power consumption (W)	9.5
Electrical protection	Class II
Control gear type	LED driver constant current
LED Flickering Rate	Ultra low (5% or less)
Housing colour	RAL 9010 - Pure white
IP rating	IP44/20

Insaver Slim UGR19 IP44 175 1200lm 840 PIR 0030519

IK rating

IK07

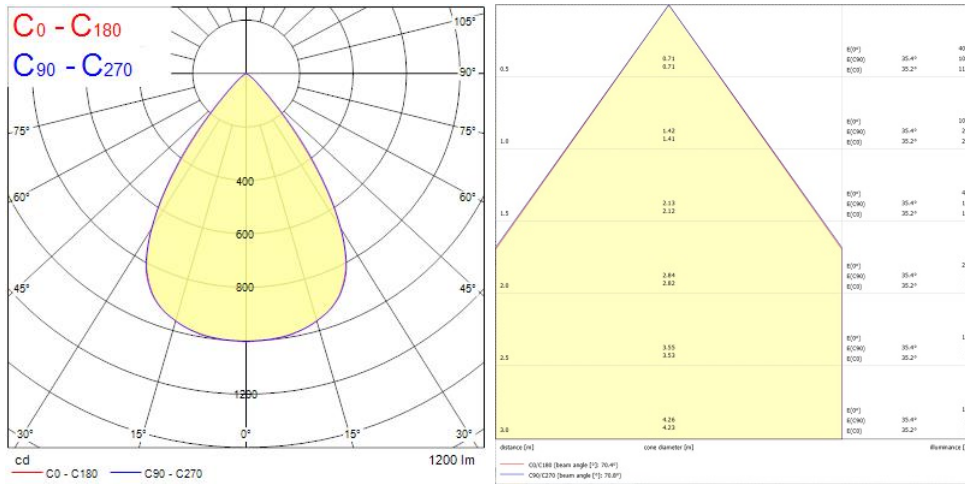
Product EAN number

5410288305196

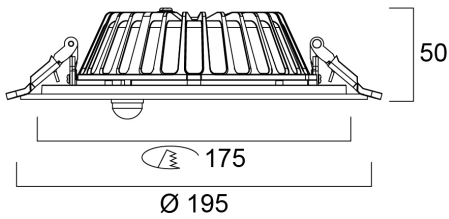
Warranty

5 years

Photometry



Technical drawings



Data table

Insaver Slim UGR19 IP44 175 1200lm 840 PIR 0030519

GENERAL DATA

Product name	Insaver Slim UGR19 IP44 175 1200lm 840 PIR
Technology	LED
Cap/Base	N/A
Housing	Aluminium
Mount	Ceiling recessed mounting
Operating temperature range (°C)	-20°C...+40°C
E-number FI	4278518
Warranty	5 years

OPTICAL DATA

Fixture luminous flux (lm)	1200
Luminaire efficacy (lm/W)	126
Colour temperature (K)	4000
Light colour	Neutral White
CRI (Ra)	80
Colour Variation Initial (SDCM)	3
Glare control	< 19
Photobiological Risk Group	RG1

ELECTRICAL DATA

Total power consumption (W)	9.5
Primary Supply/Product voltage - min (V)	220
Lamp power factor	0.9
Electrical protection	Class II
Control gear required	No
Control gear type	LED driver constant current
Drive current (mA)	300
Inrush Current (A)	15
Inrush Duration (µs)	104
Glow Wire Test (°C)	850
Energy Efficiency Class (A->G) of contained light source	D

Insaver Slim UGR19 IP44 175 1200lm 840 PIR 0030519

Nominal Frequency (Hz)	50/60Hz
LED Flickering Rate	Ultra low (5% or less)
Max. products per 10A C Breaker	66
Connectable conductor cross section - Min (mm ²)	0.75
Connectable conductor cross section - Max (mm ²)	1.5

LIFETIME DATA

Lifespan L70 B50	100000
Lifespan L80 B20	88000
Lifespan L80 B10	80000
Lifespan L90 B10	39000

PHYSICAL DATA

Housing colour	RAL 9010 - Pure white
IP rating	IP44/20
IK rating	IK07
Diffuser finish	Other
Diffuser material	None
Nominal Product Diameter (mm)	195
Weight (kg)	0.913

PACKAGING

Single packaging type	Carton
Product EAN number	5410288305196
Packaging single width (cm)	25.5
Packaging single depth (cm)	8.5
DUN14 (outer)	15410288305193
Packaging outer length / height (cm)	52.5

SAFETY DATA

Optimal operating condition (°C)	-20-40
----------------------------------	--------

Insaver Slim UGR19 IP44 175 1200lm 840 PIR

0030519

Special purpose lamp	No
Dry applications use only	No
Suitable for household illumination	No