

Features

- Insaver Slim is a surface mounted LED downlight, Die-cast aluminium body, loop in loop out connector for quick installation, Non dimmable LED driver, 20W; 2350lm; 118lm/W; 3000K; UGR <19 with height of 95 mm. Meets TP(a) requirements.

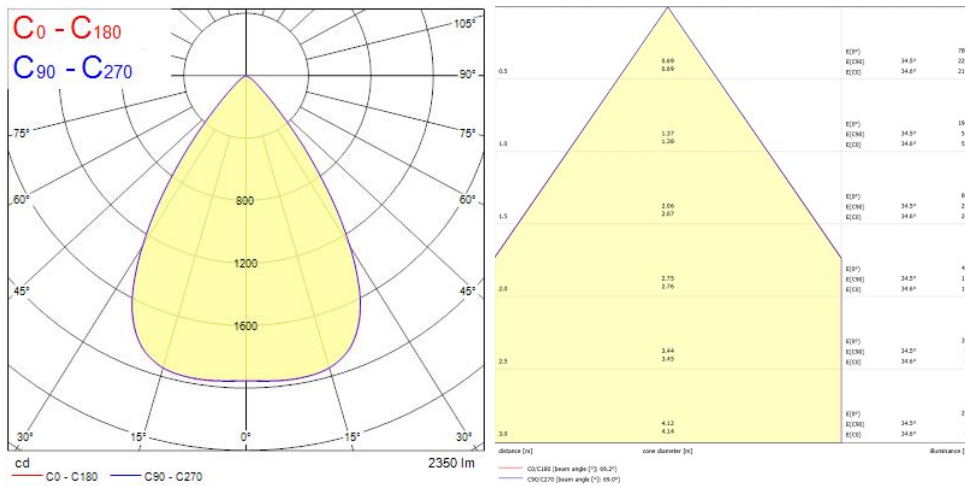
Product Overview

Product name	Insaver Slim UGR19 220 2350lm 830 Surface Mounted
Technology	LED
Cap/Base	N/A
Housing	Aluminium
Mount	Ceiling surface mounting
E-number FI	4278545
Fixture luminous flux (lm)	2350
Luminaire efficacy (lm/W)	118
Colour temperature (K)	3000
Light colour	Warm White
CRI (Ra)	80
Colour Variation Initial (SDCM)	3
Glare control	< 19
Photobiological Risk Group	RG1
Total power consumption (W)	20
Electrical protection	Class II
Control gear type	LED driver constant current
LED Flickering Rate	Ultra low (5% or less)
Housing colour	RAL 9010 - Pure white

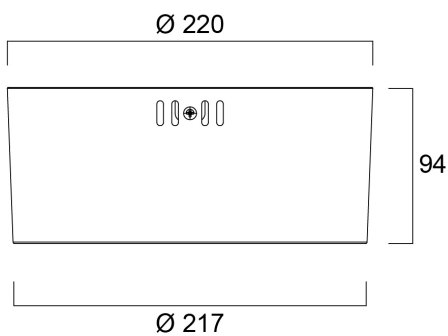
Insaver Slim UGR19 220 2350lm 830 Surface Mounted 0030516

IP rating	IP20
IK rating	IK07
Product EAN number	5410288305165
Warranty	5 years

Photometry



Technical drawings



Insaver Slim UGR19 220 2350lm 830 Surface Mounted 0030516

Data table

GENERAL DATA

Product name	Insaver Slim UGR19 220 2350lm 830 Surface Mounted
Technology	LED
Cap/Base	N/A
Housing	Aluminium
Mount	Ceiling surface mounting
Operating temperature range (°C)	-20°C...+40°C
E-number FI	4278545
Warranty	5 years

OPTICAL DATA

Fixture luminous flux (lm)	2350
Luminaire efficacy (lm/W)	118
Colour temperature (K)	3000
Light colour	Warm White
CRI (Ra)	80
Colour Variation Initial (SDCM)	3
Glare control	< 19
Photobiological Risk Group	RG1

ELECTRICAL DATA

Total power consumption (W)	20
Primary Supply/Product voltage - min (V)	220
Lamp power factor	0.9
Electrical protection	Class II
Control gear required	No
Control gear type	LED driver constant current
Drive current (mA)	600
Inrush Current (A)	20
Inrush Duration (µs)	101

Insaver Slim UGR19 220 2350lm 830 Surface Mounted 0030516

Glow Wire Test (°C)	850
Energy Efficiency Class (A->G) of contained light source	D
Nominal Frequency (Hz)	50/60Hz
LED Flickering Rate	Ultra low (5% or less)
Max. products per 10A C Breaker	38
Connectable conductor cross section - Min (mm²)	0.75
Connectable conductor cross section - Max (mm²)	1.5

LIFETIME DATA

Lifespan L70 B50	100000
Lifespan L80 B20	88000
Lifespan L80 B10	80000
Lifespan L90 B10	39000

PHYSICAL DATA

Housing colour	RAL 9010 - Pure white
IP rating	IP20
IK rating	IK07
Diffuser finish	Other
Diffuser material	None
Nominal Product Diameter (mm)	220
Weight (kg)	1.65

PACKAGING

Single packaging type	Carton
Product EAN number	5410288305165
Packaging single width (cm)	22.6
Packaging single depth (cm)	10.3
DUN14 (outer)	15410288305162
Packaging outer length / height (cm)	45.5

SAFETY DATA

Optimal operating condition (°C)	-20-40
Special purpose lamp	No
Dry applications use only	No
Suitable for household illumination	No