

INSAVER SLIM 220 SURFACE MOUNTED

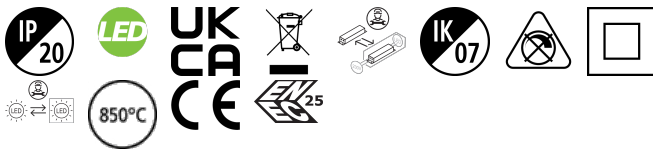
Insaver Slim UGR19 220 2350lm 830 Surface Mounted

0030516



Product features

- Insaver Slim is a surface mounted LED downlight ,Die-cast aluminium body, loop in loop out connector for quick installation, Non dimmable LED driver, 20W; 2350lm; 118lm/W; 3000K; UGR <19 with height of 95 mm. Meets TP(a) requirements.



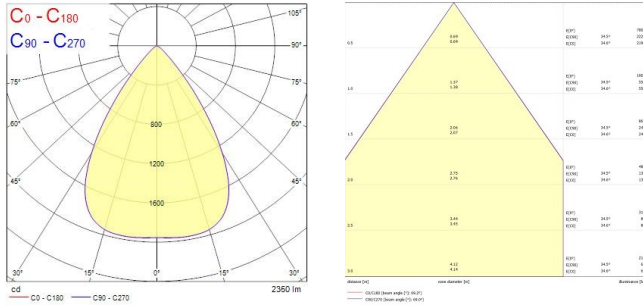
PRODUCT OVERVIEW

Product name	Insaver Slim UGR19 220 2350lm 830 Surface Mounted
Technology	LED
Cap/Base	N/A
Housing	Aluminium
Mount	Ceiling surface mounting
General application	Hospitality, Office, Retail
ETIM Class	EC001744
E-number FI	4278545
Warranty	5 years
Fixture luminous flux (lm)	2350
Luminaire efficacy (lm/W)	118
Colour temperature (K)	3000
Light colour	Warm White
CRI (Ra)	80
Colour Variation Initial (SDCM)	SDCM3
Beam Angle (°)	70
Glare control	< 19
Photobiological Risk Group	RG1
Total power consumption (W)	20
Electrical protection	Class II
Control gear type	LED driver constant current
Dimmable	No
Dimming method	N/A
LED Flickering Rate	Ultra low (5% or less)
Housing colour	RAL 9010 - Pure white
IP rating	IP20
IK rating	IK07
Product EAN number	5410288305165

PHOTOMETRY

INSAVER SLIM 220 SURFACE MOUNTED

Insaver Slim UGR19 220 2350lm 830 Surface Mounted
0030516



TECHNICAL DRAWINGS

