

10 300 970 Product version from 10/1/2023

- length of knee lever 185 mm

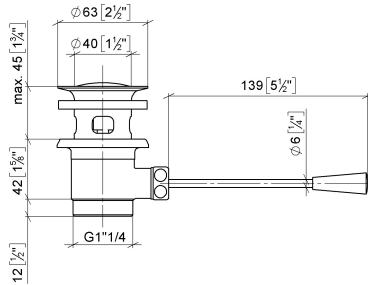
Only suitable for basins with an overflow.



	Platinum	10 300 970-08
	Chrome	10 300 970-00
	Brushed Platinum	10 300 970-06
	Durabass (23kt Gold)	10 300 970-09
	Dark Chrome	10 300 970-19
	Light Gold (PVD)	10 300 970-26
	Brushed Light Gold (PVD)	10 300 970-27
	Brushed Durabass (23kt Gold)	10 300 970-28
	Matte Black	10 300 970-33
	Brushed Gold (PVD)	10 300 970-37
	Brushed Dark Brass (PVD)	10 300 970-39
	Brushed Bronze (PVD)	10 300 970-42
	Brushed Dark Bronze (PVD)	10 300 970-43
	Brushed Champagne (22kt Gold)	10 300 970-46
	Champagne (22kt Gold)	10 300 970-47
	Brushed Chrome	10 300 970-93
	Brushed Dark Platinum	10 300 970-99

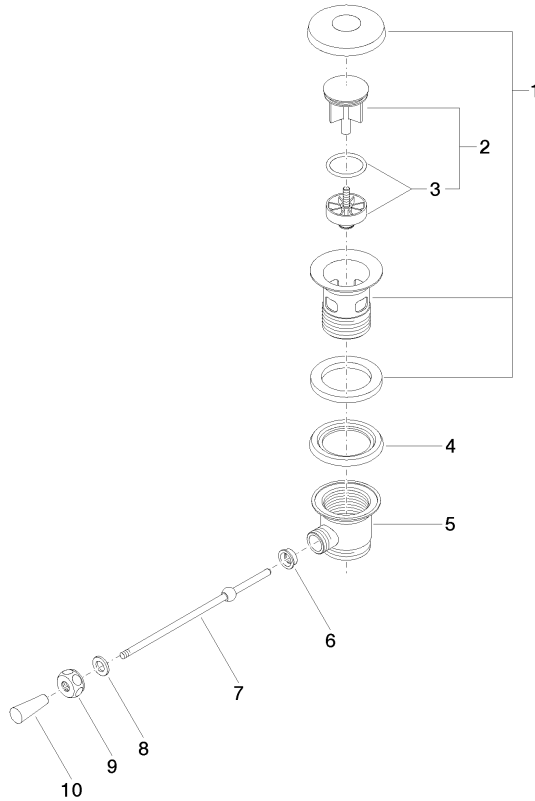
10 300 970 Product version from 10/1/2023

mm [inches]
1:2



10 300 970 Product version from 10/1/2023

Parts for other finishes can be found here: [Chrome](#)



Spare parts list

No.	Item Number	Name	Quantity used	Delivery time
9	09 23 30 003-08	Mounting for pop-up waste 1/2" - Platinum	1.00	-
Spare part can no longer be ordered, please order the replacement item				
1	90 11 01 026 00-08	Cup Ø 63 - Platinum	1.00	54
10	09 20 01 040-08	Pull button for pop-up waste Ø 15 x 37 mm - Platinum	1.00	-
Spare part can no longer be ordered, please order the replacement item				
7	09 31 09 055-08	Ball rod Ø 5 x 180 mm - Platinum	1.00	-
Spare part can no longer be ordered, please order the replacement item				
6	09 14 05 040 90	Washer for pop-up waste Ø 18 x 6,5 mm -	1.00	14
8	09 30 11 049 90	Centering disc 10,2 x 18 x 2 mm -	1.00	14
3	04 28 10 026 00 90	Plug for 1 1/4" pop-up waste -	1.00	14
2	04 31 20 016 00-08	Plug for 1 1/4" pop-up waste Ø 46 x 67,5 mm - Platinum	1.00	54
4	09 14 03 025 90	Washer Profile seal Ø 64 x 6 mm -	1.00	14
5	09 11 01 023-08	Basin Waste Lower part 1 1/4" - Platinum	1.00	54