



PHOTOMETRIC LIGHT REPORT

**Refl downl | black |
Ø108mm | 60° | 3-CCT |
7~11W | GST18i3**

Article number: 136-471



Go to the
webshop
of Tronix
Lighting



TRONIX



136-471 Refl downl | black | Ø108mm | 60° | 3-CCT | 7~11W | GST18i3

Introduction

Purpose of this Document

This document provides accurate and objective photometric data for Tronix Lighting item 136-471. All information is based on actual measurements taken from standard production units. No modifications were made to enhance performance results. In some cases, minor adjustments—such as temporary removal of covers, cables, or mounting features—were necessary for testing purposes. These did not influence product performance.

Test Methodology

Testing was conducted using randomly selected, unopened samples from regular inventory. All tests comply with the LM-79-19 standard, the recognized method for photometric and electrical measurements of LED and OLED luminaires. This standard, an update of IES LM-79-2008, outlines environmental test conditions, stabilization procedures, measurement methods, and approved instruments. It uses absolute photometry, meaning results directly reflect the performance of the tested product, without comparison to rated lamp standards.

Product 136-471 was tested using:

- A photogoniometer to measure luminous intensity distribution at various angles
- An integrating sphere to determine total luminous flux and colour characteristics

Compliance & Certification

Item 136-471 meets the requirements of the following EU directives. Tronix Lighting certifies that all relevant tests were executed in accordance with the applicable standards, and the CE mark is applied accordingly:

- General Product Safety – Directive 2023/988/EC
- Low Voltage Directive (LVD) – Directive 2014/35/EU
- Electromagnetic Compatibility (EMC) – Directive 2004/108/EC
- Ecodesign – Directive 2009/125/EC
- RoHS 3 – Directive 2011/65/EU + Amendment 2015/863/EU

Recycling & Sustainability

Tronix Lighting is affiliated with national recycling systems for electrical and electronic waste. The luminaire is over 90% recyclable when disposed of as electronic waste at end of life. In addition, Tronix Lighting participates in national packaging recycling schemes, ensuring full compliance with both the WEEE and packaging directives.



136-471 Refl downl | black | Ø108mm | 60° | 3-CCT | 7~11W | GST18i3

Laboratory and equipment

Laboratory owner and location	Tronix Lighting BV. Uden. The Netherlands
Gonio spectrometer system and type	Viso Systems Type C. horizontal
Spectrometer manufacturer and model	(Gonio) Ocean Optics STS VIS (Sphere) Admesy HERA VIS 380–780nm
Flicker meter manufacturer and model	Viso Systems LabFlicker
Oscilloscope manufacturer and model	Tektronix MDO3024 oscilloscope (4 Channels. 200 MHz)
Power meter manufacturer and model	Vitretek PA900 Precision Multi-Channel Harmonic Power Analyzer
Power source manufacturer and model	(DC) Keithley Source Measure Unit SMU-2420 3A DC Source Meter (AC) Chroma 61601 AC Source
Datalogger Manufacturer and Model	Omega 8-Channel Thermocouple Thermometer/Data Logger

Measurement conditions gonio spectrometer

Number of C-planes and Resolution	2 planes – 180°
γ (gamma)-Resolution	1°
Test Distance	1.81 m
Room Temperature and Humidity	22°C +/- 10% – RH 50% +/- 20%
Input Power. Power and Displacement Factors	10.5 W – PF 0.96 – DPF 0.97
Frequency of Input Power	50 Hz
Warm-up Time and Variation	Lamp stabilized in 15 min 3 sec --0.6%

Tested light source

Manufacturer and Order Code	Tronix Lighting – 136-471
Product Description	Refl downl black Ø108mm 60° 3-CCT 7~11W GST18i3

Main Light Measurement Results

Output – Total Lumen (Up% / Down%)	844 lm – 0% / 100%
Efficiency	80 lm/W
Energy efficiency class	F
Peak Intensity and Beam Angle	957 cd – 57.8°
Correlated Colour Temperature	CCT = 3864 K
Colour Shift. CIE duv	Duv -0.0053
Colour Rendering Index	CRI 86.9
Colour Rendering TM30-18	R _f 85.0 – R _g 95.9
Television Lighting Consistency Index	TLCI = 75
Flicker	SVM 0 – PstLM 0.02



136-471 Refl downl | black | Ø108mm | 60° | 3-CCT | 7~11W | GST18i3

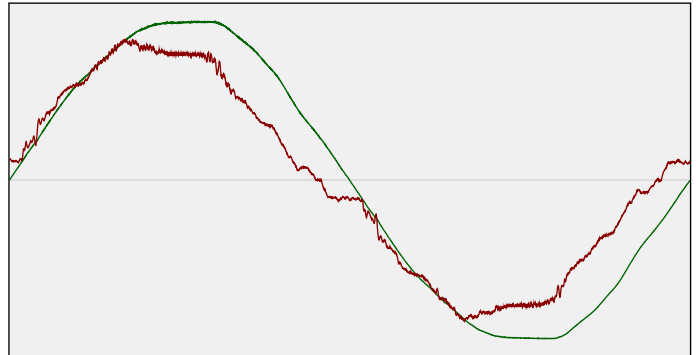
Electrical measurement details

Input Power

RMS Input voltage feed. V_{RMS}	232 V
RMS Input current feed. I_{RMS}	0.047 A
Total input power	10.5 W
Frequency of input power	50 Hz
Power factor	0.96
Displacement power factor	0.97
Total harmonic distortion of the current	10.19%
Total harmonic distortion of the voltage	2.42%

Input Power Curve

Voltage - Current



Efficiency

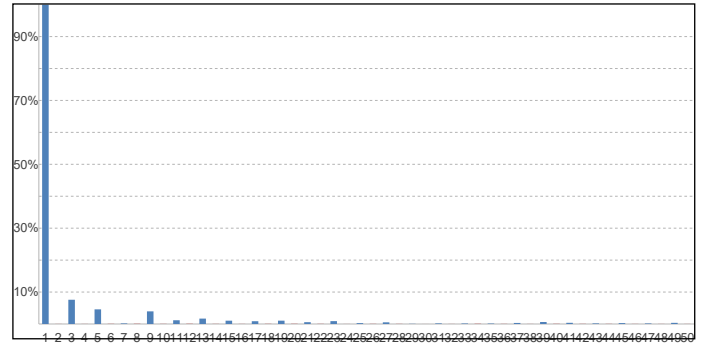
Radiated power efficiency: 25.2%



Lumen efficiency: 80 lm/W



Current Harmonics %



Harmonics

3rd Harmonic	7.59%
5th Harmonic	4.58%
7th Harmonic	0.18%
9th Harmonic	3.95%
11th Harmonic	1.17%

Stabilization Details

Warm-up Conditions

Stable period	15 min
Stable change max	2.0%
Minimum warm-up time	15 min

Colour temperature change during warm-up

CCT start	3796 K
CCT shift	+68 K
CCT end	3864 K

Warm-up Results

Total warmup time	Lamp stabilized in 15 min 3 sec
Warmup variation	-0.6%

Output intensity change during warm-up

Output start	848 lm
Output change	-5 lm
Output end	844 lm



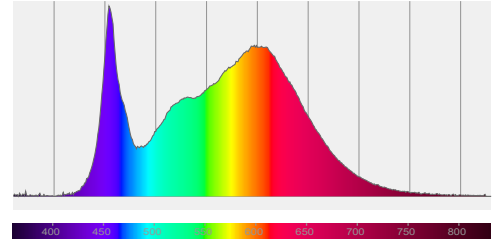
136-471 Refl downl | black | Ø108mm | 60° | 3-CCT | 7~11W | GST18i3

Colour measurement details

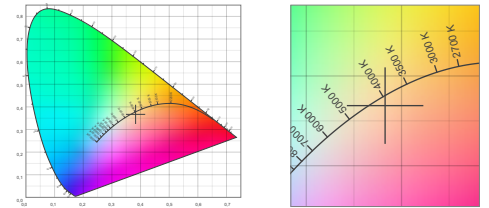
Total lumen output 844 lm
 Correlated Colour Temperature 3864 K
 Colour coordinates CIE 1931 (x;y) = (0.383;0.367)
 Colour deviation from BBL Duv = -0.0053

TM30-18 Colour Fidelity Index R_f 85.0
 TM30-18 Colour Gamut Index R_g 95.9
 Colour Rendering Index (Ra) CRI 86.9
 Colour Rendering Index. (red component) R9 = 25.9

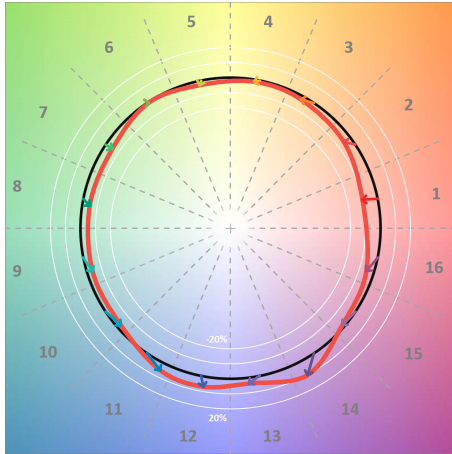
Colour Quality Scale CQS = 84.1
 Television Lighting Consistency Index TLCI = 75



Relative spectral power distribution



TM30 details

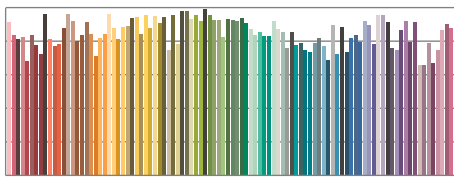


TM30 Colour vectors per hue bin

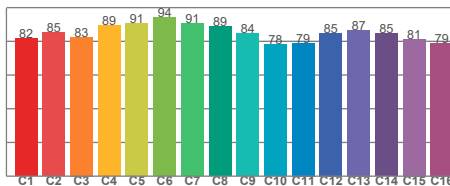


TM30 Colour distortion

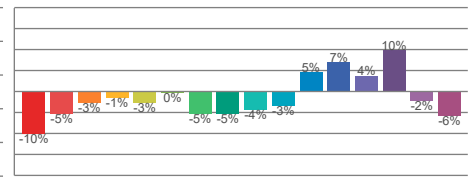
Hue Bin	R _f	Shifts (%)	
		Chroma	Hue
C1	82	-10%	1%
C2	85	-5%	6%
C3	83	-3%	9%
C4	89	-1%	4%
C5	91	-3%	2%
C6	94	0%	-1%
C7	91	-5%	0%
C8	89	-5%	4%
C9	84	-4%	10%
C10	78	-3%	13%
C11	79	5%	14%
C12	85	7%	3%
C13	87	4%	-8%
C14	85	10%	-12%
C15	81	-2%	-12%
C16	79	-6%	-10%



TM30-18 Rf-values per reference colour

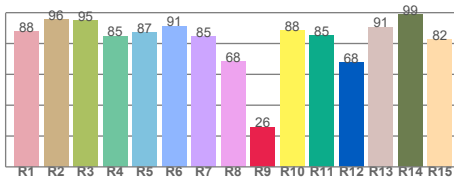


TM30-18 Rf-values per hue bin

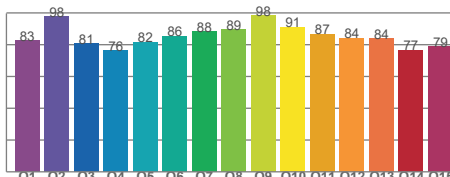


TM30 Chroma shift

Colour Quality details



Colour Rendering Index



Colour Quality Scale

Document revision date: 1-7-2025 Measurement serial: VFR-250131-1985-MS



136-471 Refl downl | black | Ø108mm | 60° | 3-CCT | 7~11W | GST18i3

Flicker / temporal light artefacts details

Measurement conditions

Flicker meter type	Viso Systems LabFlicker
Flicker/TLA sample rate	20000 samples/s
Measurement time	5x 180 seconds (15 minutes) for PstLM. 1.2 sec for all other indices

Flicker indices according to Illuminating Engineering Society (IES)

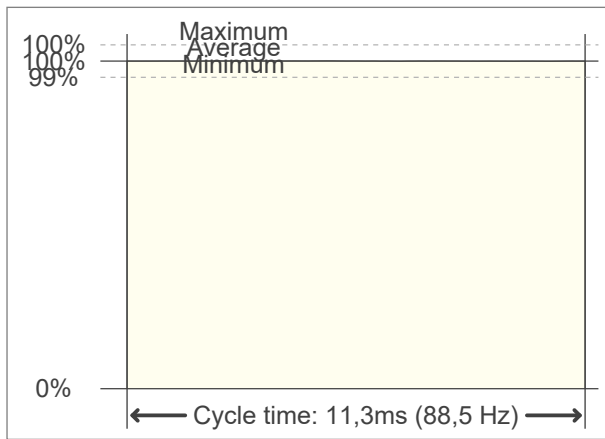
Flicker frequency	88.5 Hz
Percent flicker	0.14 %
Flicker index	0

TLA indices (according IEC TR 61547-1. EN 61000-3-3 and EN 61000-4-15)

An LED luminaire is considered flicker-free if the SVM value is ≤ 0.4 and if the PstLM value is ≤ 1.0

PstLM value (F < 80 Hz)	0.02
SVM value (80 < F < 2000 Hz)	0

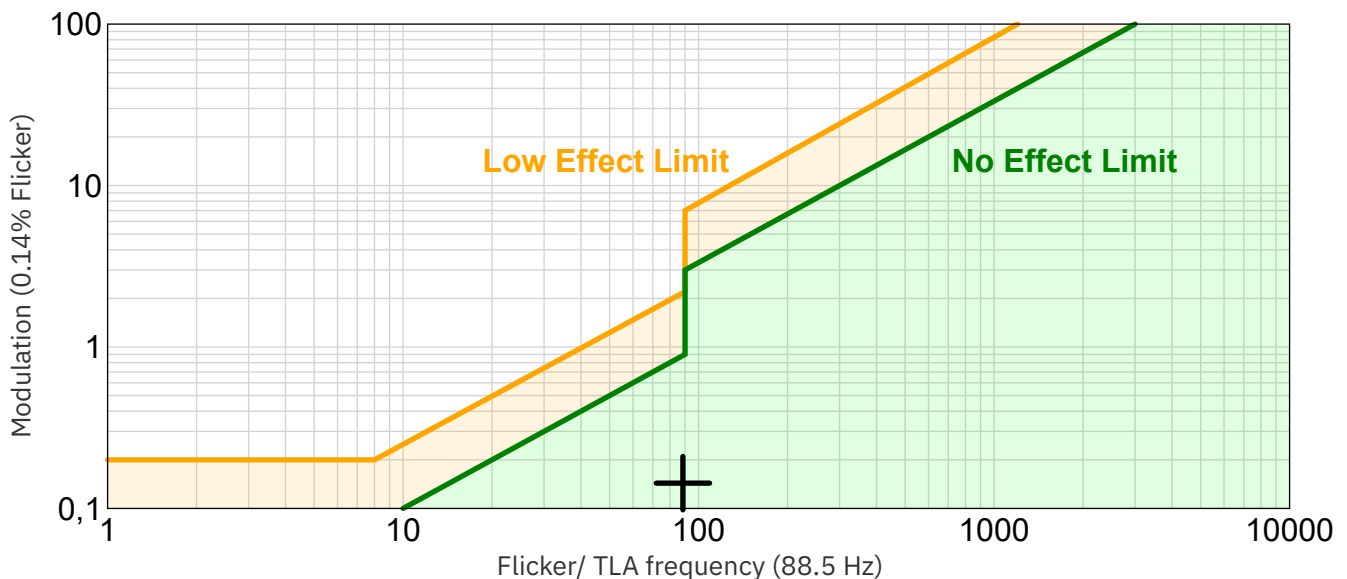
Flicker frame (one flicker period in time domain)



Flicker FFT (flicker curve in frequency domain)



IEEE 1789-2015 Lighting Flicker Risk Zones



Document revision date: 1-7-2025 Measurement serial: VFR-250131-1985-MS

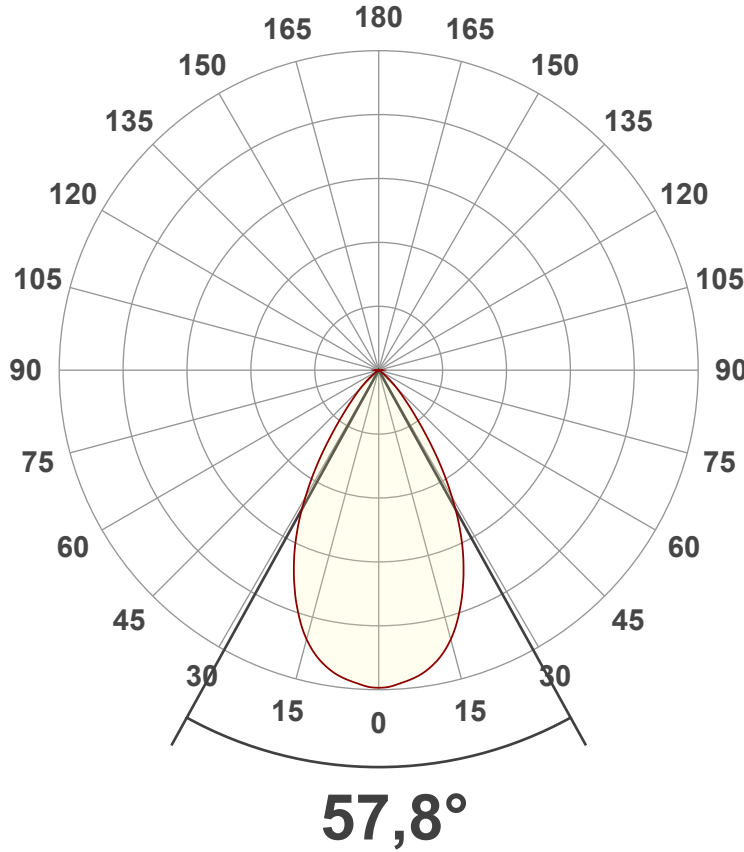


136-471 Refl downl | black | Ø108mm | 60° | 3-CCT | 7~11W | GST18i3

Beam angle

Luminous Intensity diagram

Unit: 0-100% of peak intensity



Main Values

Output (total Lumen)	844 lm
Lumen Up/Down	0% / 100%
Peak Intensity	957 cd
Beam Angle (50%)	57.8°
Beam Angle (90%)	57.8°
Beam Angle (10%)	57.8°

Cut-off Angle

Average 2.5%	103.4°
--------------	--------

Field Angle

Average 10%	87.2°
-------------	-------

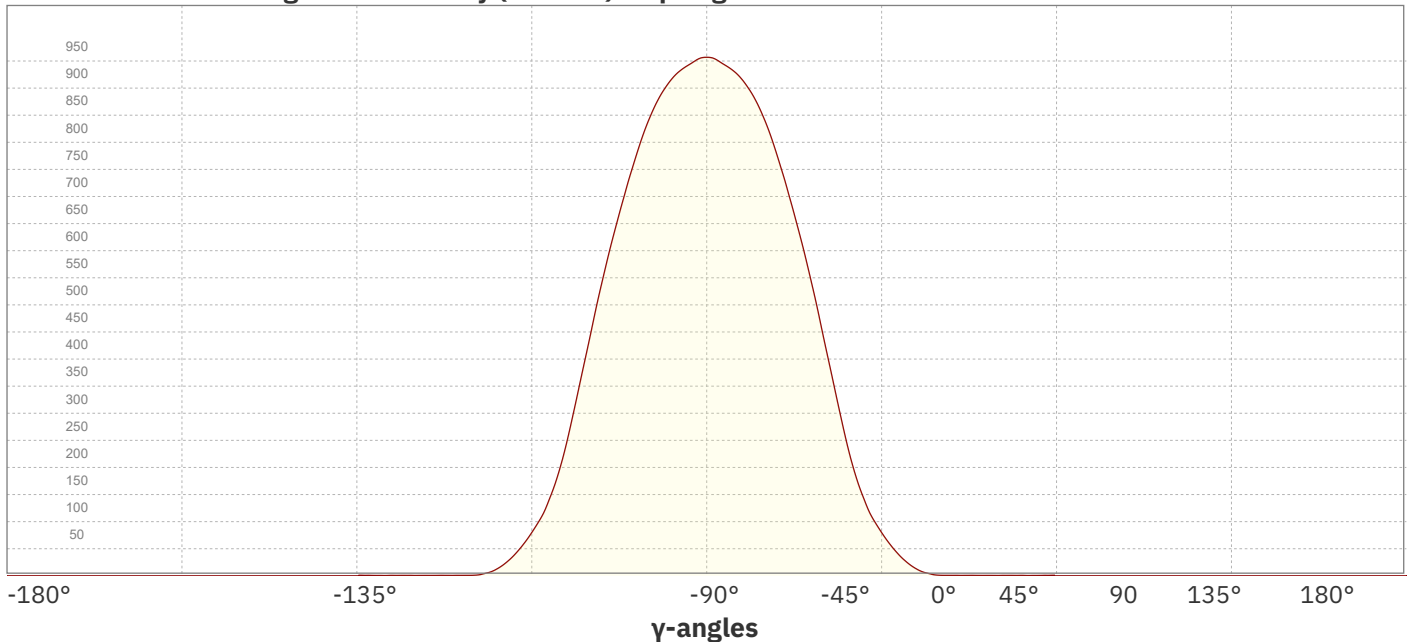
Intensity Ratio

In 120° cone	99.7%
In 90° cone	95.8%

C planes

- C000-C180
- C090-C270

Linear distribution diagram - Intensity (candela) vs γ-angle

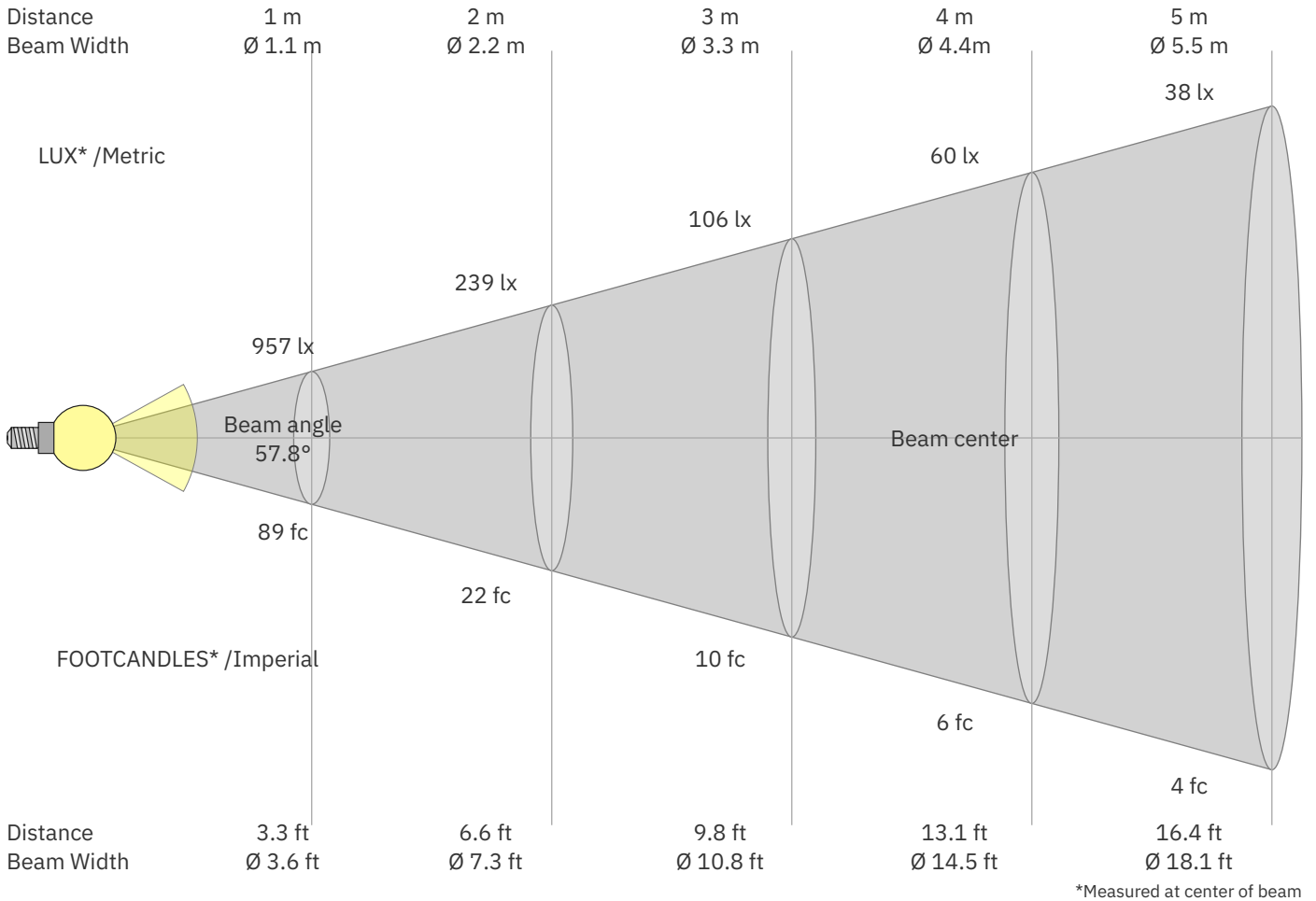


Document revision date: 1-7-2025 Measurement serial: VFR-250131-1985-MS



136-471 Refl downl | black | Ø108mm | 60° | 3-CCT | 7~11W | GST18i3

Beam Details



*Measured at center of beam

Beam intensities from 1 – 20 m

1	2	3	4	5	6	7	8	9	10	11	12	13	14	15	16	17	18	19	20	m
3.3	6.6	9.8	13.1	16.4	19.7	23	26.2	29.5	32.8	36.1	39.4	42.7	45.9	49.2	52.5	55.8	59.1	62.3	65.6	ft
957	239	106	60	38	27	20	15	12	10	8	7	6	5	4	4	3	3	3	2	lux
88.9	22.2	9.9	5.6	3.6	2.5	1.8	1.4	1.1	0.9	0.7	0.6	0.5	0.5	0.4	0.3	0.3	0.3	0.2	0.2	fc

Intensities in 0° c-plane

0°	2°	4°	6°	8°	10°	12°	14°	16°	18°	20°	22°	24°	26°	28°	30°	32°	34°	36°	38°	γ
957	954	945	936	925	907	885	856	821	778	732	681	627	570	509	442	376	310	247	193	cd
100%	100%	99%	98%	97%	95%	92%	89%	86%	81%	76%	71%	66%	60%	53%	46%	39%	32%	26%	20%	of 0°val

Intensities in 90° c-plane

0°	2°	4°	6°	8°	10°	12°	14°	16°	18°	20°	22°	24°	26°	28°	30°	32°	34°	36°	38°	γ
957	954	945	936	925	907	885	856	821	778	732	681	627	570	509	442	376	310	247	193	cd
100%	100%	99%	98%	97%	95%	92%	89%	86%	81%	76%	71%	66%	60%	53%	46%	39%	32%	26%	20%	of 0°val

Intensities in 180° c-plane

0°	2°	4°	6°	8°	10°	12°	14°	16°	18°	20°	22°	24°	26°	28°	30°	32°	34°	36°	38°	γ
957	954	945	936	925	907	885	856	821	778	732	681	627	570	509	442	376	310	247	193	cd
100%	100%	99%	98%	97%	95%	92%	89%	86%	81%	76%	71%	66%	60%	53%	46%	39%	32%	26%	20%	of 0°val

Intensities in 270° c-plane

0°	2°	4°	6°	8°	10°	12°	14°	16°	18°	20°	22°	24°	26°	28°	30°	32°	34°	36°	38°	γ
957	954	945	936	925	907	885	856	821	778	732	681	627	570	509	442	376	310	247	193	cd
100%	100%	99%	98%	97%	95%	92%	89%	86%	81%	76%	71%	66%	60%	53%	46%	39%	32%	26%	20%	of 0°val

Document revision date: 1-7-2025 Measurement serial: VFR-250131-1985-MS





136-471 Refl downl | black | Ø108mm | 60° | 3-CCT | 7~11W | GST18i3

Light Planning – UGR table

Uncorrected, comprehensive UGR table according to CIE 117-1995

Reflectances		70	70	50	50	30	70	70	50	50	30
ρ Ceiling		70	70	50	50	30	70	70	50	50	30
ρ Walls		50	30	50	30	30	50	30	50	30	30
ρ Floor		20	20	20	20	20	20	20	20	20	20
Room size		Viewed Crosswise					Viewed Endwise				
H = mounting height above eye level		(Viewing direction orthogonal to lamp length axis)					(Viewing direction parallel to lamp length axis)				
X	Y										
2H	2H	20.1	20.8	20.2	21.0	21.2	20.1	20.8	20.2	21.0	21.2
	3H	19.8	20.6	20.2	20.8	21.0	19.8	20.6	20.2	20.8	21.0
	4H	19.7	20.5	20.1	20.7	20.9	19.7	20.5	20.1	20.7	20.9
	6H	19.7	20.3	20.0	20.6	21.0	19.7	20.3	20.0	20.6	21.0
	8H	19.7	20.3	20.0	20.6	21.0	19.7	20.3	20.0	20.6	21.0
	12H	19.6	20.2	20.0	20.6	21.0	19.6	20.2	20.0	20.6	21.0
4H	2H	19.7	20.5	20.1	20.7	20.9	19.7	20.5	20.1	20.7	20.9
	3H	19.6	20.2	20.0	20.6	21.0	19.6	20.2	20.0	20.6	21.0
	4H	19.5	20.0	19.9	20.4	21.0	19.5	20.0	19.9	20.4	21.0
	6H	19.4	20.0	19.9	20.3	20.7	19.4	20.0	19.9	20.3	20.7
	8H	19.4	19.9	19.9	20.2	20.6	19.4	19.9	19.9	20.2	20.6
	12H	19.3	19.7	19.8	20.1	20.6	19.3	19.7	19.8	20.1	20.6
8H	4H	19.4	19.9	19.9	20.2	20.6	19.4	19.9	19.9	20.2	20.6
	6H	19.3	19.6	19.8	20.1	20.6	19.3	19.6	19.8	20.1	20.6
	8H	19.3	19.6	19.8	20.1	20.7	19.3	19.6	19.8	20.1	20.7
	12H	19.3	19.5	19.8	20.0	20.6	19.3	19.5	19.8	20.0	20.6
12H	4H	19.3	19.7	19.8	20.1	20.6	19.3	19.7	19.8	20.1	20.6
	6H	19.3	19.6	19.8	20.1	20.7	19.3	19.6	19.8	20.1	20.7
	8H	19.2	19.5	19.8	20.0	20.6	19.2	19.5	19.8	20.0	20.6

Variations with the observer position for the luminaire spacings. S:

S = 1.0H	4.4 / -11.1	4.4 / -11.1
S = 1.5H	7.0 / -13.6	7.0 / -13.6
S = 2.0H	8.9 / -13.9	8.9 / -13.9

Coefficients of Utilization

Ceiling reflectance	80	70	50	30	10	0												
Wall reflectance	70 50 30	10 70 50	30 10 50	30 10 50	30 10 50	30 10 0												
Floor reflectance	20 20 20	20 20 20	20 20 20	20 20 20	20 20 20	20 20 0												
RCR	(RCR: Room Cavity Ratio)																	
	Room Values are expressed as percentage of Lumen delivered to the task surface																	
0	119	119	119	119	116	116	116	116	111	111	106	106	106	102	102	102	100	
1	113	111	108	106	111	109	106	104	104	103	101	101	99	98	97	96	95	93
2	108	103	99	95	106	101	98	94	98	95	92	95	93	90	92	90	89	87
3	102	96	91	87	100	95	90	86	92	88	85	89	86	84	87	85	82	81
4	97	90	84	80	95	88	83	79	86	82	78	84	81	77	82	79	77	75
5	92	84	78	74	91	83	77	73	81	76	73	79	75	72	78	74	71	70
6	88	79	73	68	86	78	72	68	76	71	68	75	70	67	74	70	67	65
7	83	74	68	64	82	73	67	63	72	67	63	71	66	63	70	65	62	61
8	79	70	64	59	78	69	63	59	68	63	59	67	62	59	66	62	58	57
9	75	66	60	56	74	65	59	56	64	59	55	63	59	55	62	58	55	54
10	72	62	56	52	71	62	56	52	61	56	52	60	55	52	59	55	52	50