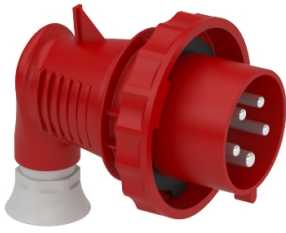


Product data sheet

Specifications



Wander plug, Mureva PK, 90° angled, 32A, 3P+N+E, 400V, IP67

81771

Main

Range	Mureva
Product or component type	Wander plug
Device short name	Mureva plug
Plug, socket category	Low voltage
Poles description	3P + N + E
Network type	AC
Outlet standard	Industrial

Complementary

Plug, socket, control station shape	90° angled
[In] rated current	32 A
[Ue] rated operational voltage	380...415 V
Network frequency	50/60 Hz
Ground lug clockwise position	6 h
Plug, socket material	Housing: self-extinguishing engineering polymer
Contacts material	Pins: nickel plated brass
Connections - terminals	Captive screws
Cable cross section	2.5...10 mm ²
Cable outer diameter	11.5...21 mm
cable entry	Cable gland
Thread type	Pg 21
Product weight	0.308 kg
Height	141 mm
Width	116 mm
Depth	116 mm
Colour	Grey (RAL 7035)
Voltage colour	Red

Environment

Standards	IEC 60309-2 IEC 60309-1
IP degree of protection	IP67 conforming to IEC 60529

IK degree of protection	IK08 conforming to EN 62262
Fire resistance	850 °C conforming to IEC 60695-2-11
Relative humidity	50 % at 40 °C 70 % at 30 °C 90 % at 20 °C
Operating altitude	2000 m
Ambient air temperature for operation	35 °C (86400 s) -25...40 °C

Packing Units

Unit Type of Package 1	PCE
Number of Units in Package 1	1
Package 1 Height	15.000 cm
Package 1 Width	10.000 cm
Package 1 Length	11.000 cm
Package 1 Weight	285.000 g
Unit Type of Package 2	BB1
Number of Units in Package 2	6
Package 2 Height	15.500 cm
Package 2 Width	21.000 cm
Package 2 Length	27.000 cm
Package 2 Weight	1.862 kg
Unit Type of Package 3	S03
Number of Units in Package 3	12
Package 3 Height	30.000 cm
Package 3 Width	30.000 cm
Package 3 Length	40.000 cm
Package 3 Weight	4.211 kg

Contractual warranty

Warranty (in months)	18
-----------------------------	----



Environmental Data

Schneider Electric aims to achieve Net Zero status by 2050 through supply chain partnerships, lower impact materials, and circularity via our ongoing “Use Better, Use Longer, Use Again” campaign to extend product lifetimes and recyclability.

[Environmental Data explained >](#)

[How we assess product sustainability >](#)



Environmental footprint

Total lifecycle Carbon footprint	11 kg CO2 eq.
Carbon footprint of the manufacturing phase [A1 to A3]	2 kg CO2 eq.
Carbon footprint of the distribution phase [A4]	0 kg CO2 eq.
Carbon footprint of the installation phase [A5]	0 kg CO2 eq.
Carbon footprint of the use phase [B2, B3, B4, B6]	8 kg CO2 eq.
Carbon footprint of the end-of-life phase [C1 to C4]	0.9 kg CO2 eq.
Environmental Disclosure	Product Environmental Profile

Use Better



Materials and Substances

Packaging made with recycled cardboard	Yes
Packaging without single use plastic	No
SCIP Number	661ec80b-b956-4b0a-92bb-53046f4cfb4c
EU RoHS Directive	Compliant By Exemption
REACH Regulation	Reference contains Substances of Very High Concern above the threshold
California proposition 65	WARNING: This product can expose you to chemicals including: Lead and lead compounds, which is known to the State of California to cause cancer and birth defects or other reproductive harm. For more information go to www.P65Warnings.ca.gov

Use Longer



Lifetime extension

Repair	No
--------	----

Use Again



Repack and remanufacture

Recyclability potential, in %	33
End of life manual availability	No need of specific recycling operations
Take-back	No
WEEE Label	 The product must be disposed on European Union markets following specific waste collection and never end up in rubbish bins