



PHOTOMETRIC LIGHT REPORT

**Refl downl | black |
Ø145mm | 60° | 3-CCT |
6~15W | GST18i3**

Article number: 136-472



Go to the
webshop
of Tronix
Lighting



TRONIX



136-472 Refl downl | black | Ø145mm | 60° | 3-CCT | 6~15W | GST18i3

Introduction

Purpose of this Document

This document provides accurate and objective photometric data for Tronix Lighting item 136-472. All information is based on actual measurements taken from standard production units. No modifications were made to enhance performance results. In some cases, minor adjustments—such as temporary removal of covers, cables, or mounting features—were necessary for testing purposes. These did not influence product performance.

Test Methodology

Testing was conducted using randomly selected, unopened samples from regular inventory. All tests comply with the LM-79-19 standard, the recognized method for photometric and electrical measurements of LED and OLED luminaires. This standard, an update of IES LM-79-2008, outlines environmental test conditions, stabilization procedures, measurement methods, and approved instruments. It uses absolute photometry, meaning results directly reflect the performance of the tested product, without comparison to rated lamp standards.

Product 136-472 was tested using:

- A photogoniometer to measure luminous intensity distribution at various angles
- An integrating sphere to determine total luminous flux and colour characteristics

Compliance & Certification

Item 136-472 meets the requirements of the following EU directives. Tronix Lighting certifies that all relevant tests were executed in accordance with the applicable standards, and the CE mark is applied accordingly:

- General Product Safety – Directive 2023/988/EC
- Low Voltage Directive (LVD) – Directive 2014/35/EU
- Electromagnetic Compatibility (EMC) – Directive 2004/108/EC
- Ecodesign – Directive 2009/125/EC
- RoHS 3 – Directive 2011/65/EU + Amendment 2015/863/EU

Recycling & Sustainability

Tronix Lighting is affiliated with national recycling systems for electrical and electronic waste. The luminaire is over 90% recyclable when disposed of as electronic waste at end of life. In addition, Tronix Lighting participates in national packaging recycling schemes, ensuring full compliance with both the WEEE and packaging directives.



136-472 Refl downl | black | Ø145mm | 60° | 3-CCT | 6~15W | GST18i3

Laboratory and equipment

Laboratory owner and location	Tronix Lighting BV. Uden. The Netherlands
Gonio spectrometer system and type	Viso Systems Type C. horizontal
Spectrometer manufacturer and model	(Gonio) Ocean Optics STS VIS (Sphere) Admesy HERA VIS 380–780nm
Flicker meter manufacturer and model	Viso Systems LabFlicker
Oscilloscope manufacturer and model	Tektronix MDO3024 oscilloscope (4 Channels. 200 MHz)
Power meter manufacturer and model	Vitretek PA900 Precision Multi-Channel Harmonic Power Analyzer
Power source manufacturer and model	(DC) Keithley Source Measure Unit SMU-2420 3A DC Source Meter (AC) Chroma 61601 AC Source
Datalogger Manufacturer and Model	Omega 8-Channel Thermocouple Thermometer/Data Logger

Measurement conditions gonio spectrometer

Number of C-planes and Resolution	2 planes – 180°
γ (gamma)-Resolution	1°
Test Distance	1.81 m
Room Temperature and Humidity	22°C +/- 10% – RH 50% +/- 20%
Input Power. Power and Displacement Factors	13.6 W – PF 0.96 – DPF 0.96
Frequency of Input Power	50 Hz
Warm-up Time and Variation	Lamp stabilized in 15 min 3 sec --0.7%

Tested light source

Manufacturer and Order Code	Tronix Lighting – 136-472
Product Description	Refl downl black Ø145mm 60° 3-CCT 6~15W GST18i3

Main Light Measurement Results

Output – Total Lumen (Up% / Down%)	1204 lm – 0% / 100%
Efficiency	89 lm/W
Energy efficiency class	F
Peak Intensity and Beam Angle	1285 cd – 58.7°
Correlated Colour Temperature	CCT = 3842 K
Colour Shift. CIE duv	Duv -0.0058
Colour Rendering Index	CRI 87.2
Colour Rendering TM30-18	R _f 84.8 – R _g 95.1
Television Lighting Consistency Index	TLCI = 76
Flicker	SVM 0 – PstLM 0.02



136-472 Refl downl | black | Ø145mm | 60° | 3-CCT | 6~15W | GST18i3

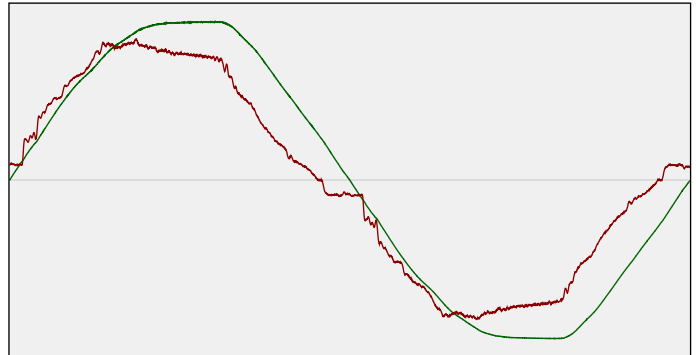
Electrical measurement details

Input Power

RMS Input voltage feed. V_{RMS}	230 V
RMS Input current feed. I_{RMS}	0.062 A
Total input power	13.6 W
Frequency of input power	50 Hz
Power factor	0.96
Displacement power factor	0.96
Total harmonic distortion of the current	10.55%
Total harmonic distortion of the voltage	2.83%

Input Power Curve

Voltage - Current



Efficiency

Radiated power efficiency: 28.1%



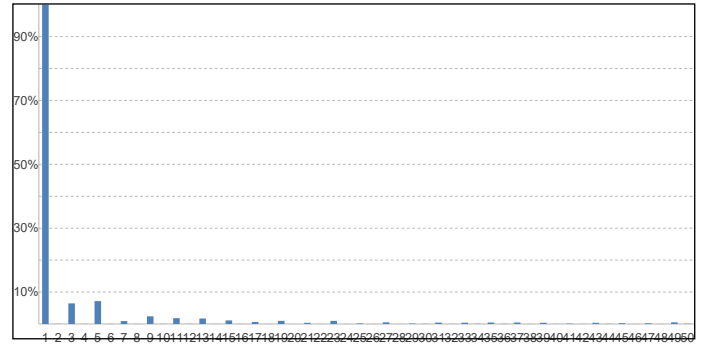
Lumen efficiency: 89 lm/W



Harmonics

3rd Harmonic	6.45%
5th Harmonic	7.16%
7th Harmonic	0.91%
9th Harmonic	2.4%
11th Harmonic	1.83%

Current Harmonics %



Stabilization Details

Warm-up Conditions

Stable period	15 min
Stable change max	2.0%
Minimum warm-up time	15 min

Colour temperature change during warm-up

CCT start	3795 K
CCT shift	+47 K
CCT end	3842 K

Warm-up Results

Total warmup time	Lamp stabilized in 15 min 3 sec
Warmup variation	-0.7%

Output intensity change during warm-up

Output start	1212 lm
Output change	-8 lm
Output end	1204 lm



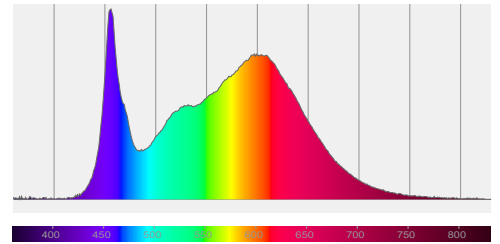
136-472 Refl downl | black | Ø145mm | 60° | 3-CCT | 6~15W | GST18i3

Colour measurement details

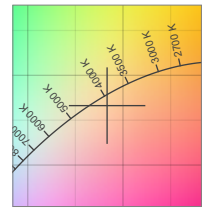
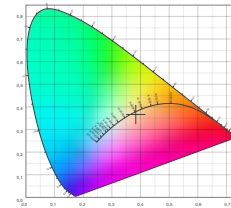
Total lumen output 1204 lm
 Correlated Colour Temperature 3842 K
 Colour coordinates CIE 1931 (x;y) = (0.383;0.366)
 Colour deviation from BBL Duv = -0.0058

TM30-18 Colour Fidelity Index R_f 84.8
 TM30-18 Colour Gamut Index R_g 95.1
 Colour Rendering Index (Ra) CRI 87.2
 Colour Rendering Index. (red component) R9 = 29.2

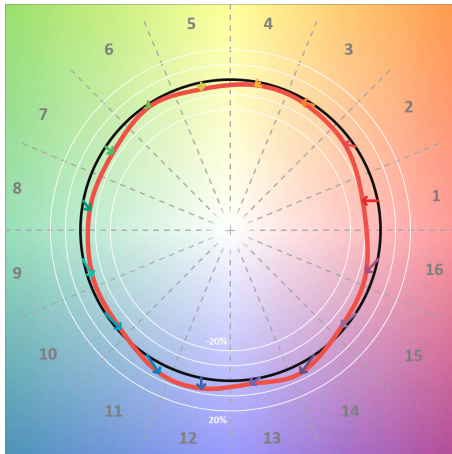
Colour Quality Scale CQS = 84.4
 Television Lighting Consistency Index TLCI = 76



Relative spectral power distribution



TM30 details

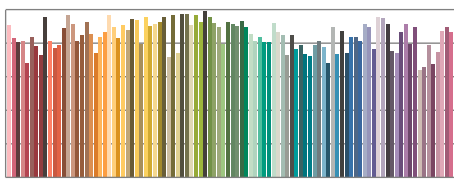


TM30 Colour vectors per hue bin

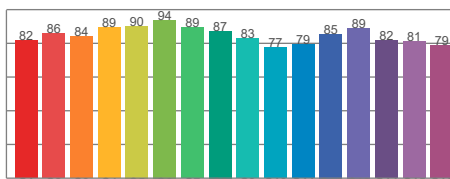


TM30 Colour distortion

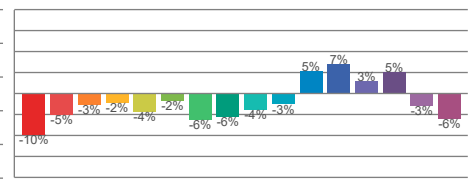
Hue Bin	R _f	Shifts (%)	
		Chroma	Hue
C1	82	-10%	2%
C2	86	-5%	6%
C3	84	-3%	8%
C4	89	-2%	2%
C5	90	-4%	1%
C6	94	-2%	-1%
C7	89	-6%	1%
C8	87	-6%	5%
C9	83	-4%	12%
C10	77	-3%	14%
C11	79	5%	13%
C12	85	7%	2%
C13	89	3%	-7%
C14	82	5%	-14%
C15	81	-3%	-12%
C16	79	-6%	-10%



TM30-18 Rf-values per reference colour

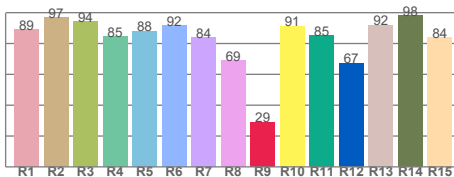


TM30-18 Rf-values per hue bin

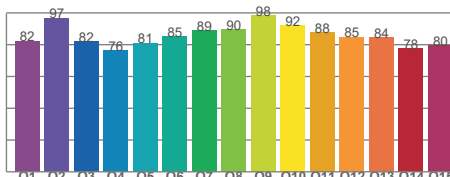


TM30 Chroma shift

Colour Quality details



Colour Rendering Index



Colour Quality Scale

Document revision date: 1-7-2025 Measurement serial: VFR-250131-1948-MS



136-472 Refl downl | black | Ø145mm | 60° | 3-CCT | 6~15W | GST18i3

Flicker / temporal light artefacts details

Measurement conditions

Flicker meter type	Viso Systems LabFlicker
Flicker/TLA sample rate	20000 samples/s
Measurement time	5x 180 seconds (15 minutes) for PstLM. 1.2 sec for all other indices

Flicker indices according to Illuminating Engineering Society (IES)

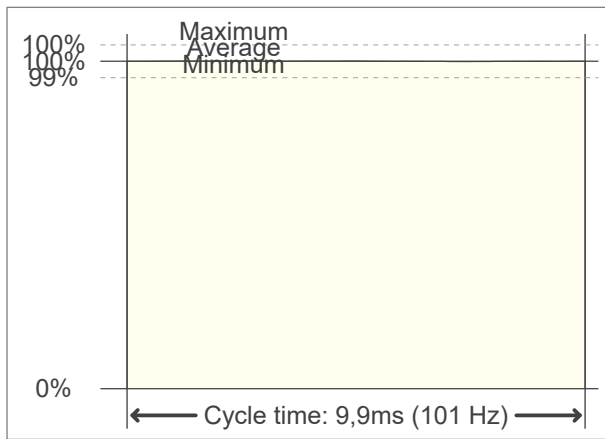
Flicker frequency	101.01 Hz
Percent flicker	0.16 %
Flicker index	0

TLA indices (according IEC TR 61547-1. EN 61000-3-3 and EN 61000-4-15)

An LED luminaire is considered flicker-free if the SVM value is ≤ 0.4 and if the PstLM value is ≤ 1.0

PstLM value (F < 80 Hz)	0.02
SVM value (80 < F < 2000 Hz)	0

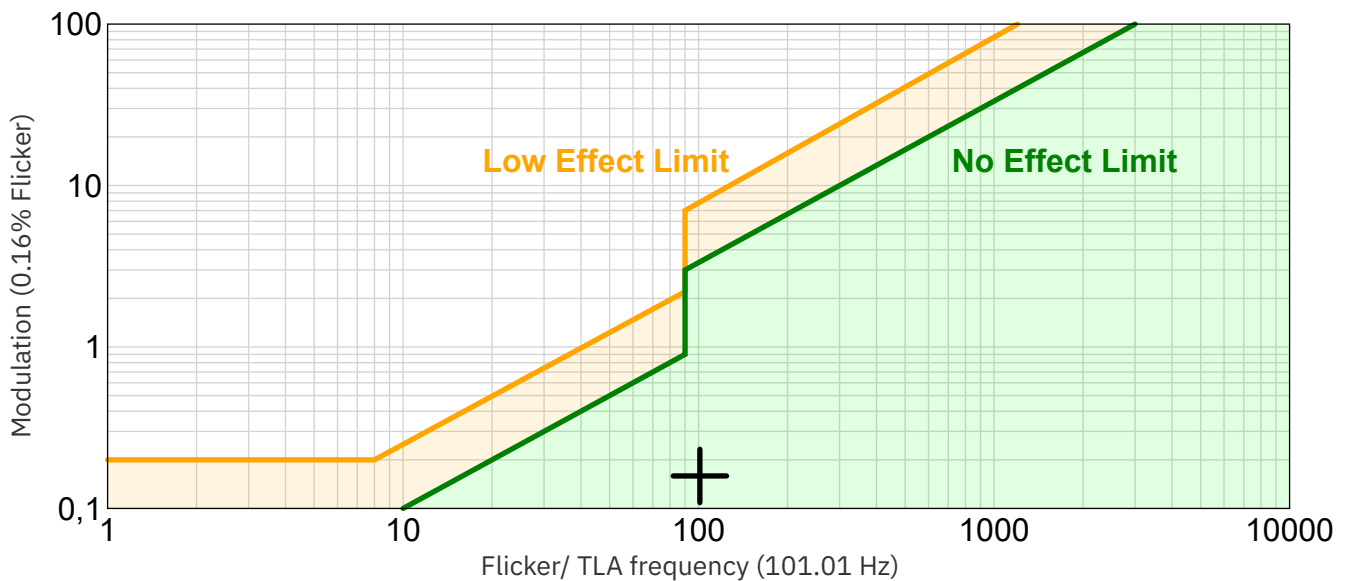
Flicker frame (one flicker period in time domain)



Flicker FFT (flicker curve in frequency domain)



IEEE 1789-2015 Lighting Flicker Risk Zones



Document revision date: 1-7-2025 Measurement serial: VFR-250131-1948-MS

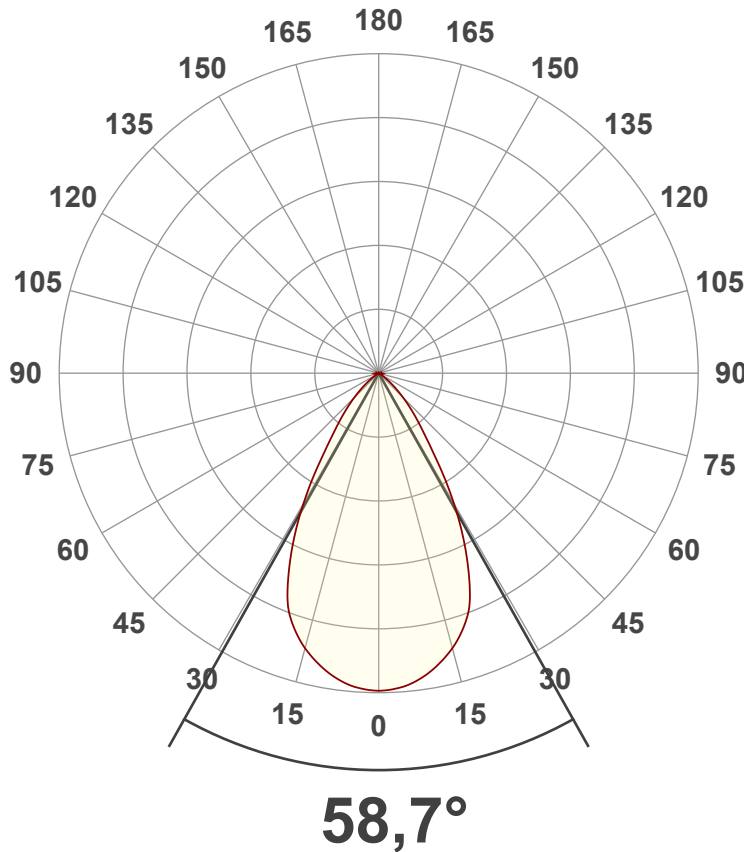


136-472 Refl downl | black | Ø145mm | 60° | 3-CCT | 6~15W | GST18i3

Beam angle

Luminous Intensity diagram

Unit: 0-100% of peak intensity



Main Values

Output (total Lumen)	1204 lm
Lumen Up/Down	0% / 100%
Peak Intensity	1285 cd
Beam Angle (50%)	58.7°
Beam Angle (90%)	58.7°
Beam Angle (10%)	58.7°

Cut-off Angle

Average 2.5%	107.9°
--------------	--------

Field Angle

Average 10%	91.5°
-------------	-------

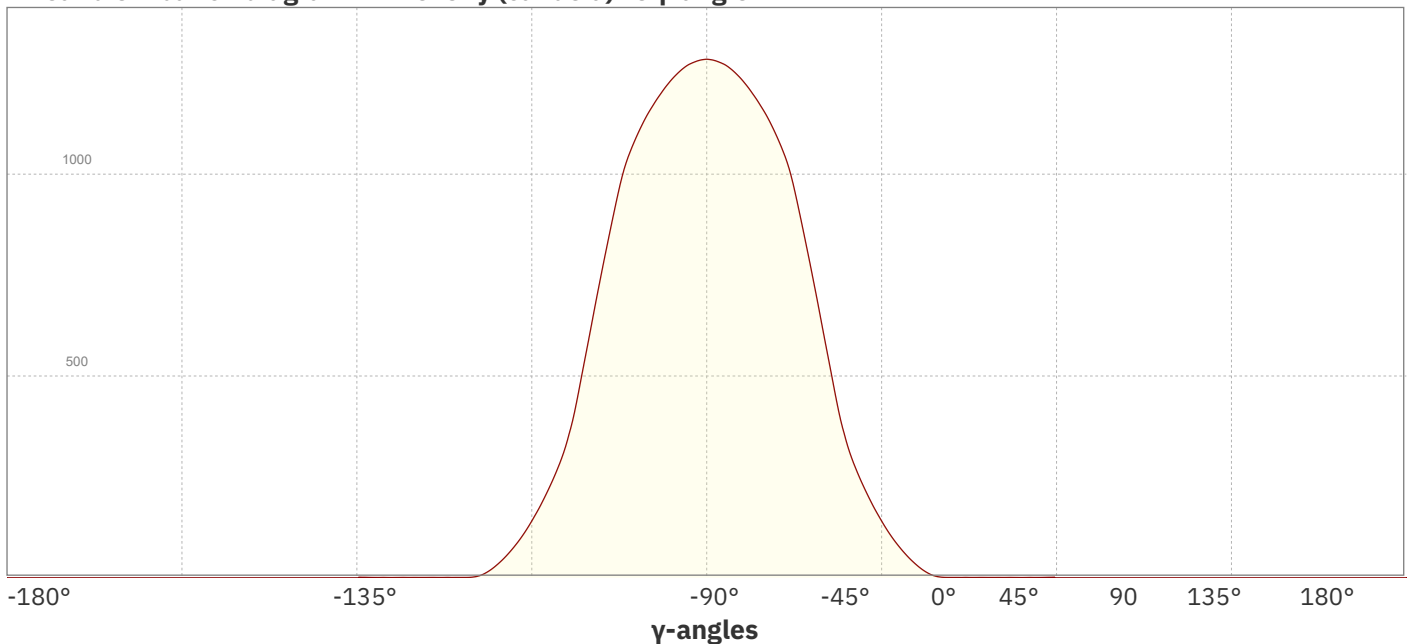
Intensity Ratio

In 120° cone	99.8%
In 90° cone	94.3%

C planes

- C000-C180
- C090-C270

Linear distribution diagram - Intensity (candela) vs γ-angle

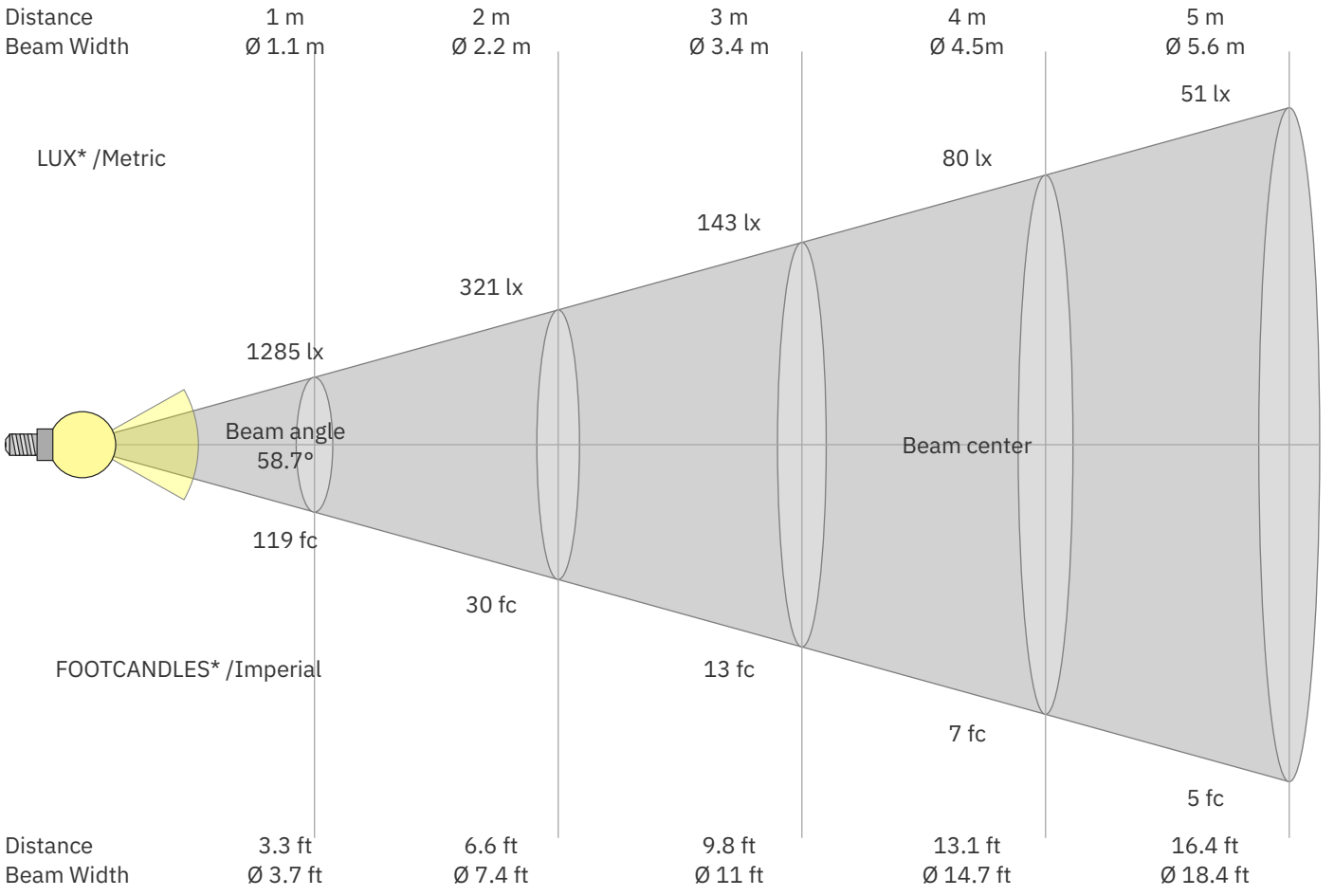


Document revision date: 1-7-2025 Measurement serial: VFR-250131-1948-MS



136-472 Refl downl | black | Ø145mm | 60° | 3-CCT | 6~15W | GST18i3

Beam Details



*Measured at center of beam

Beam intensities from 1 – 20 m

1	2	3	4	5	6	7	8	9	10	11	12	13	14	15	16	17	18	19	20	m
3.3	6.6	9.8	13.1	16.4	19.7	23	26.2	29.5	32.8	36.1	39.4	42.7	45.9	49.2	52.5	55.8	59.1	62.3	65.6	ft
1285	321	143	80	51	36	26	20	16	13	11	9	8	7	6	5	4	4	4	3	lux
119.3	29.8	13.3	7.5	4.8	3.3	2.4	1.9	1.5	1.2	1	0.8	0.7	0.6	0.5	0.5	0.4	0.4	0.3	0.3	fc

Intensities in 0° c-plane

0°	2°	4°	6°	8°	10°	12°	14°	16°	18°	20°	22°	24°	26°	28°	30°	32°	34°	36°	38°	γ
1285	1282	1274	1262	1245	1223	1197	1167	1134	1094	1047	984	898	805	709	608	508	411	335	279	cd
100%	100%	99%	98%	97%	95%	93%	91%	88%	85%	82%	77%	70%	63%	55%	47%	40%	32%	26%	22%	of 0°val

Intensities in 90° c-plane

0°	2°	4°	6°	8°	10°	12°	14°	16°	18°	20°	22°	24°	26°	28°	30°	32°	34°	36°	38°	γ
1285	1282	1274	1262	1245	1223	1197	1167	1134	1094	1047	984	898	805	709	608	508	411	335	279	cd
100%	100%	99%	98%	97%	95%	93%	91%	88%	85%	82%	77%	70%	63%	55%	47%	40%	32%	26%	22%	of 0°val

Intensities in 180° c-plane

0°	2°	4°	6°	8°	10°	12°	14°	16°	18°	20°	22°	24°	26°	28°	30°	32°	34°	36°	38°	γ
1285	1282	1274	1262	1245	1223	1197	1167	1134	1094	1047	984	898	805	709	608	508	411	335	279	cd
100%	100%	99%	98%	97%	95%	93%	91%	88%	85%	82%	77%	70%	63%	55%	47%	40%	32%	26%	22%	of 0°val

Intensities in 270° c-plane

0°	2°	4°	6°	8°	10°	12°	14°	16°	18°	20°	22°	24°	26°	28°	30°	32°	34°	36°	38°	γ
1285	1282	1274	1262	1245	1223	1197	1167	1134	1094	1047	984	898	805	709	608	508	411	335	279	cd
100%	100%	99%	98%	97%	95%	93%	91%	88%	85%	82%	77%	70%	63%	55%	47%	40%	32%	26%	22%	of 0°val

Document revision date: 1-7-2025 Measurement serial: VFR-250131-1948-MS





136-472 Refl downl | black | Ø145mm | 60° | 3-CCT | 6~15W | GST18i3

Light Planning – UGR table

Uncorrected, comprehensive UGR table according to CIE 117-1995

Reflectances		70	70	50	50	30	70	70	50	50	30
ρ Ceiling		70	70	50	50	30	70	70	50	50	30
ρ Walls		50	30	50	30	30	50	30	50	30	30
ρ Floor		20	20	20	20	20	20	20	20	20	20
Room size		Viewed Crosswise					Viewed Endwise				
H = mounting height above eye level		(Viewing direction orthogonal to lamp length axis)					(Viewing direction parallel to lamp length axis)				
X	Y										
2H	2H	18.5	19.1	18.6	19.4	19.6	18.5	19.1	18.6	19.4	19.6
	3H	18.2	19.0	18.5	19.2	19.3	18.2	19.0	18.5	19.2	19.3
	4H	18.1	18.8	18.5	19.1	19.3	18.1	18.8	18.5	19.1	19.3
	6H	18.1	18.7	18.4	19.0	19.4	18.1	18.7	18.4	19.0	19.4
	8H	18.0	18.6	18.4	19.0	19.4	18.0	18.6	18.4	19.0	19.4
	12H	18.0	18.6	18.3	18.9	19.3	18.0	18.6	18.3	18.9	19.3
4H	2H	18.1	18.9	18.5	19.1	19.3	18.1	18.9	18.5	19.1	19.3
	3H	18.0	18.6	18.3	18.9	19.4	18.0	18.6	18.3	18.9	19.4
	4H	17.9	18.4	18.3	18.8	19.3	17.9	18.4	18.3	18.8	19.3
	6H	17.8	18.3	18.3	18.7	19.0	17.8	18.3	18.3	18.7	19.0
	8H	17.7	18.2	18.2	18.6	19.0	17.7	18.2	18.2	18.6	19.0
	12H	17.7	18.1	18.2	18.5	18.9	17.7	18.1	18.2	18.5	18.9
8H	4H	17.7	18.2	18.2	18.6	18.9	17.7	18.2	18.2	18.6	18.9
	6H	17.7	18.0	18.2	18.5	19.0	17.7	18.0	18.2	18.5	19.0
	8H	17.7	17.9	18.2	18.5	19.1	17.7	17.9	18.2	18.5	19.1
	12H	17.6	17.8	18.2	18.3	18.9	17.6	17.8	18.2	18.3	18.9
12H	4H	17.7	18.1	18.2	18.5	18.9	17.7	18.1	18.2	18.5	18.9
	6H	17.7	17.9	18.2	18.5	19.1	17.7	17.9	18.2	18.5	19.1
	8H	17.6	17.8	18.2	18.3	18.9	17.6	17.8	18.2	18.3	18.9

Variations with the observer position for the luminaire spacings. S:

S = 1.0H	3.7 / -9.1	3.7 / -9.1
S = 1.5H	6.2 / -15.5	6.2 / -15.5
S = 2.0H	8.1 / -15.9	8.1 / -15.9

Coefficients of Utilization

Ceiling reflectance	80	70			50			30			10			0		
Wall reflectance	70	50	30	10	70	50	30	10	50	30	10	50	30	10	0	
Floor reflectance	20	20	20	20	20	20	20	20	20	20	20	20	20	20	0	
RCR	(RCR: Room Cavity Ratio)															
	Room Values are expressed as percentage of Lumen delivered to the task surface															
0	119	119	119	119	116	116	116	116	111	111	106	106	106	102	102	100
1	113	111	108	106	111	108	106	104	104	103	101	101	99	98	97	96
2	108	103	99	95	105	101	97	94	98	95	92	95	92	90	92	90
3	102	95	90	86	100	94	89	86	91	87	84	89	86	83	87	84
4	97	89	83	79	95	88	83	78	86	81	78	84	80	77	82	78
5	92	83	77	73	90	82	77	72	80	75	72	79	74	71	77	73
6	87	78	72	67	85	77	71	67	75	70	67	74	69	66	73	69
7	82	73	67	62	81	72	66	62	71	66	62	70	65	62	69	64
8	78	69	62	58	77	68	62	58	67	62	58	66	61	58	65	61
9	74	65	59	54	73	64	58	54	63	58	54	62	57	54	61	57
10	71	61	55	51	70	61	55	51	60	55	51	59	54	51	58	54