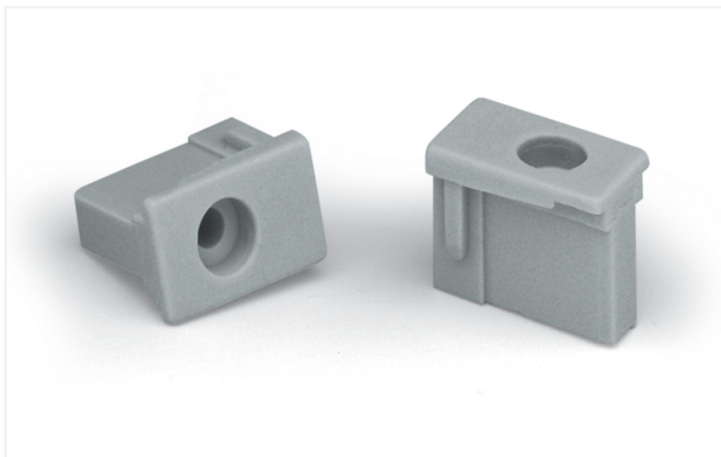


Data Sheet | Item Number: 231-193
Locking device; for male connectors; 1 part; gray

<https://www.wago.com/231-193>



Color: ■ gray

Mechanical data

Mounting type	Screw mount
Mounting type	Panel mounting
Suitable	for angled THT male headers

Material data

Note (material data)	Information on material specifications can be found here
Color	gray
Material group	I
Insulation material (main housing)	Polyamide (PA66)
Flammability class per UL94	V0
Fire load	0.012 MJ
Weight	0.4 g



Commercial data

Product Group	3 (Multi Conn. System)
PU (SPU)	100 (25) pcs
Packaging type	Box
Country of origin	DE
GTIN	4017332117975
Customs tariff number	85389099990

Product Classification	
UNSPSC	39121702
eCl@ss 10.0	27-14-11-92
eCl@ss 9.0	27-14-11-92
ETIM 9.0	EC002848
ETIM 10.0	EC002848
ECCN	NO US CLASSIFICATION

Environmental Product Compliance	
RoHS Compliance Status	Compliant, No Exemption

Approvals / Certificates

General approvals			Approvals for marine applications		
					
Approval	Standard	Certificate Name	Approval	Standard	Certificate Name
CSA DEKRA Certification B.V.	C22.2	1466354	LR Lloyds Register	IEC 61984	96/20035 (E5)

Downloads

Environmental Product Compliance	
Compliance Search	
Environmental Product Compliance 231-193	↓

Documentation

Additional Information			
Technical Section	03.04.2019	pdf 2027.26 KB	↓

CAD/CAE-Data

CAD data		CAE data	
2D/3D Models 231-193	↓	ZUKEN Portal 231-193	↓

1 Compatible Products

1.1 Optional Accessories

1.1.1 Installation

1.1.1.1 Mounting accessories



Item No.: 231-195

Screw with nut; M2x12; for fixing element

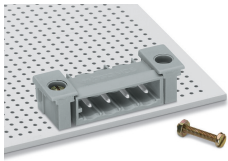


Item No.: 231-194

Self-tapping screw; B 2.2x13, fixing hole 1.8 mm Ø

Installation Notes

Installation



Locking devices enhance connection reliability between male headers with angled solder pins and the PCB. This substantially reduces mechanical stress on both solder pins and joints, particularly when dealing with small lengths and frequent mating cycles.