

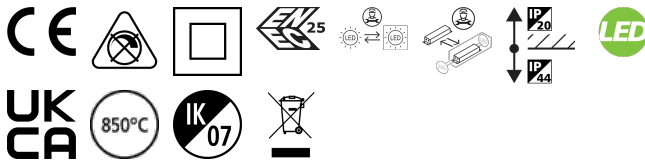
## INSAVER SLIM SQUARE 200

*Insaver Slim UGR19 IP44 200 2500lm 840 Square*  
0030513



### Product features

- Insaver Slim is a ceiling recessed LED downlight (IP44 from the front), Die-cast aluminium body, loop in loop out connector for quick installation, Non dimmable LED driver, 20W; 2500lm; 125lm/W; 4000K; UGR <19 with shallow product depth 65mm. Meets TP(a) requirements.



### PRODUCT OVERVIEW

Product name	Insaver Slim UGR19 IP44 200 2500lm 840 Square
Technology	LED
Cap/Base	N/A
Housing	Aluminium
Mount	Ceiling recessed mounting
General application	Hospitality, Office, Retail
ETIM Class	EC001744
E-number FI	4278543
Warranty	5 years
Fixture luminous flux (lm)	2500
Luminaire efficacy (lm/W)	125
Colour temperature (K)	4000
Light colour	Neutral White
CRI (Ra)	80
Colour Variation Initial (SDCM)	SDCM3
Beam Angle (°)	70
Glare control	< 19
Photobiological Risk Group	RG1
Total power consumption (W)	20
Electrical protection	Class II
Control gear type	LED driver constant current
Dimmable	No
Dimming method	N/A
LED Flickering Rate	Ultra low (5% or less)
Housing colour	RAL 9010 - Pure white
IP rating	IP44/20
IK rating	IK07
Product EAN number	5410288305134

### DATA TABLE

General data

## INSAVER SLIM SQUARE 200

*Insaver Slim UGR19 IP44 200 2500lm 840 Square*

0030513

Product name	Insaver Slim UGR19 IP44 200 2500lm 840 Square
Technology	LED
Cap/Base	N/A
Housing	Aluminium
Mount	Ceiling recessed mounting
General application	Hospitality, Office, Retail
Operating temperature range (°C)	-20°C...+40°C
ETIM Class	EC001744
E-number FI	4278543
Warranty	5 years

### Optical data

Fixture luminous flux (lm)	2500
Luminaire efficacy (lm/W)	125
Colour temperature (K)	4000
Light colour	Neutral White
CRI (Ra)	80
Colour Variation Initial (SDCM)	SDCM3
Beam Angle (°)	70
Distribution type	Symmetric
Glare control	< 19
Photobiological Risk Group	RG1

### Electrical data

Total power consumption (W)	20
Primary Supply/Product voltage - min (V)	220
Primary Supply/Product voltage - max (V)	240
Lamp power factor	0.9
THD (at 230 V, 50 Hz, full load, at 100% dimming level) xx.x %	20.0
Electrical protection	Class II
Control gear type	LED driver constant current
Dimmable	No
Dimming method	N/A
Drive current (mA)	600
Inrush Current (A)	20
Inrush Duration (µs)	101
Glow Wire Test (°C)	850
Energy Efficiency Class (A->G) of contained light source	D
Nominal Frequency (Hz)	50/60Hz
LED Flickering Rate	Ultra low (5% or less)
Max. products per 10A C Breaker	38
Max. products per 16A C Breaker	57
Max. products per 16A B Breaker	45
Connectable conductor cross section - Min (mm²)	0.75
Connectable conductor cross section - Max (mm²)	1.5

## INSAVER SLIM SQUARE 200

*Insaver Slim UGR19 IP44 200 2500lm 840 Square*  
0030513

### Lifetime data

Lifespan L70 B50	100000
Lifespan L80 B20	88000
Lifespan L80 B10	80000
Lifespan L90 B10	39000

### Physical data

Housing colour	RAL 9010 - Pure white
IP rating	IP44/20
IK rating	IK07
Diffuser finish	Other
Diffuser material	None
Reflector finish	Silver
Nominal Product Length (mm)	217
Nominal Product Width (mm)	217
Nominal Product Height (mm)	60
Cutout Dimensions (W x L in mm or Diameter in mm)	200 x 200
Weight (kg)	0.8

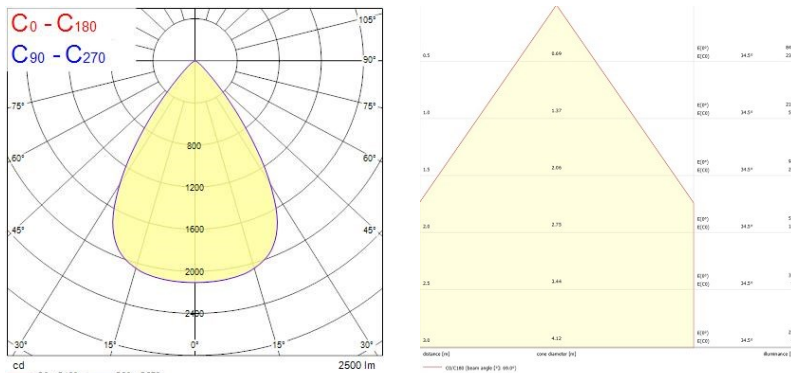
### Packaging

Single packaging type	Carton
Product EAN number	5410288305134
Packaging single length / height (cm)	25.0
Packaging single width (cm)	25.0
Packaging single depth (cm)	8.0
DUN14 (outer)	15410288305131
Units per outer package	12
Packaging outer length / height (cm)	51.5
Packaging outer width (cm)	51.5
Packaging outer depth (cm)	26.0

### Safety data

Optimal operating condition (°C)	-20-40
----------------------------------	--------

## PHOTOMETRY



## INSAVER SLIM SQUARE 200

*Insaver Slim UGR19 IP44 200 2500lm 840 Square*  
0030513

---

### TECHNICAL DRAWINGS

---

