

169-297 2500K 60 degree specific configuration  
Track spot | white | 20W | 925-927-930 | 45° | dim

## Introduction

### Purpose of this Document

This document provides information for 169-297 2500K 60 degree. During measurement, the product is used in a different mode where output power, colour temperature and/or beam angle are changed from factory standard. These adjustments can be made without altering the product and are designed to be set by the installer. In most cases, the options are set through switches on the product.

### Results

Total input power	19.7 W
Correlated Colour Temperature	2466 K
Total lumen output	1075 lm
Efficiency	55 lm/W

## Electrical measurement details

### Input Power

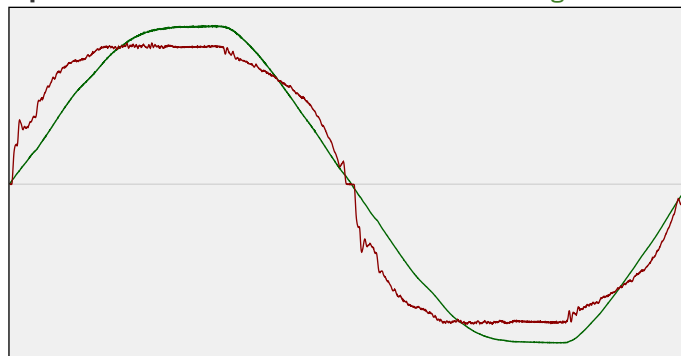
RMS Input voltage feed. $V_{RMS}$	231 V
RMS Input current feed. $I_{RMS}$	0.087 A
Total input power	19.7 W

Frequency of input power	50 Hz
Power factor	0.98
Displacement power factor	1.0

Total harmonic distortion of the current	17.22%
Total harmonic distortion of the voltage	3.16%

### Input Power Curve

Voltage - Current



### Efficiency

Radiated power efficiency: 19.9%



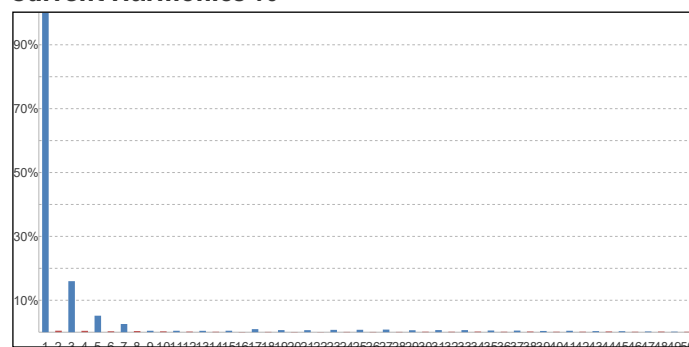
Lumen efficiency: 55 lm/W



### Harmonics

3rd Harmonic	15.98%
5th Harmonic	5.17%
7th Harmonic	2.57%
9th Harmonic	0.45%
11th Harmonic	0.46%

### Current Harmonics %



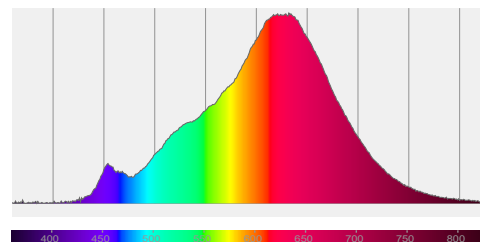
## 169-297 2500K 60 degree specific configuration

### Colour measurement details

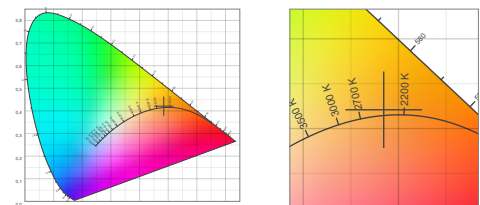
Total lumen output 1075 lm  
 Correlated Colour Temperature 2466 K  
 Colour coordinates CIE 1931 (x;y) = (0.485;0.421)  
 Colour deviation from BBL Duv = 0.0021

TM30-18 Colour Fidelity Index  $R_f$  92.4  
 TM30-18 Colour Gamut Index  $R_g$  96.6  
 Colour Rendering Index (Ra) CRI 94.0  
 Colour Rendering Index. (red component)  $R_9 = 59.1$

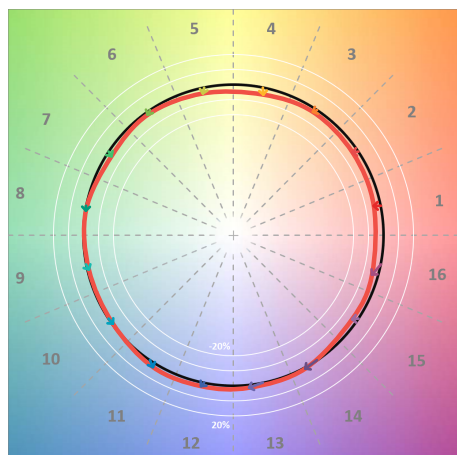
Colour Quality Scale CQS = 89.3  
 Television Lighting Consistency Index TLCI = 92



Relative spectral power distribution



### TM30 details

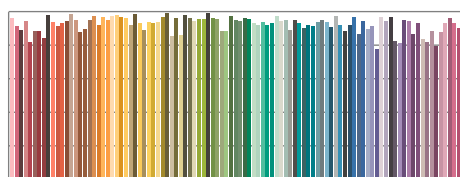


TM30 Colour vectors per hue bin

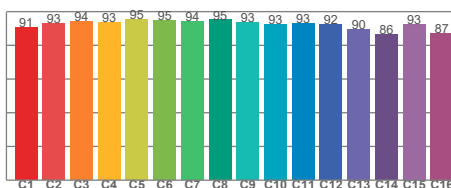


TM30 Colour distortion

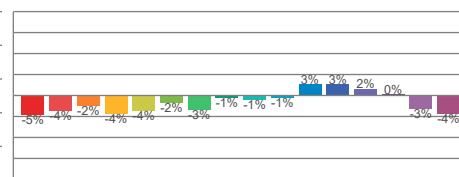
Hue Bin	$R_f$	Shifts (%)	
		Chroma	Hue
C1	91	-5%	1%
C2	93	-4%	2%
C3	94	-2%	2%
C4	93	-4%	-1%
C5	95	-4%	2%
C6	95	-2%	3%
C7	94	-3%	1%
C8	95	-1%	3%
C9	93	-1%	4%
C10	93	-1%	4%
C11	93	3%	4%
C12	92	3%	-2%
C13	90	2%	-10%
C14	86	0%	-10%
C15	93	-3%	-3%
C16	87	-4%	-8%



TM30-18  $R_f$ -values per reference colour

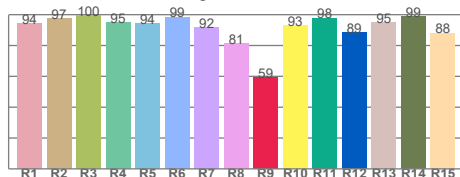


TM30-18  $R_f$ -values per hue bin

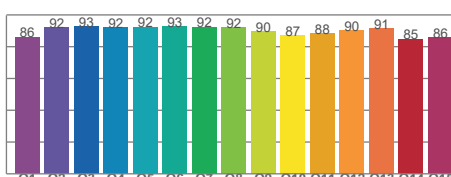


TM30 Chroma shift

### Colour Quality details



Colour Rendering Index



Colour Quality Scale