

Features

- Insaver Slim is a ceiling recessed LED downlight (IP44 from the front), Die-cast aluminium body, loop in loop out connector for quick installation, Non dimmable LED driver, 20W; 2350lm; 118lm/W; 3000K; UGR <19 with shallow product depth 65mm. Meets TP(a) requirements.

Product Overview

Product name	Insaver Slim UGR19 IP44 200 2350lm 830 Square
Technology	LED
Cap/Base	N/A
Housing	Aluminium
Mount	Ceiling recessed mounting
E-number FI	4278541
Fixture luminous flux (lm)	2350
Luminaire efficacy (lm/W)	118
Colour temperature (K)	3000
Light colour	Warm White
CRI (Ra)	80
Colour Variation Initial (SDCM)	3
Glare control	< 19
Photobiological Risk Group	RG1
Total power consumption (W)	20
Electrical protection	Class II
Control gear type	LED driver constant current
LED Flickering Rate	Ultra low (5% or less)
Housing colour	RAL 9010 - Pure white
IP rating	IP44/20
IK rating	IK07

Insaver Slim UGR19 IP44 200 2350lm 830 Square 0030512

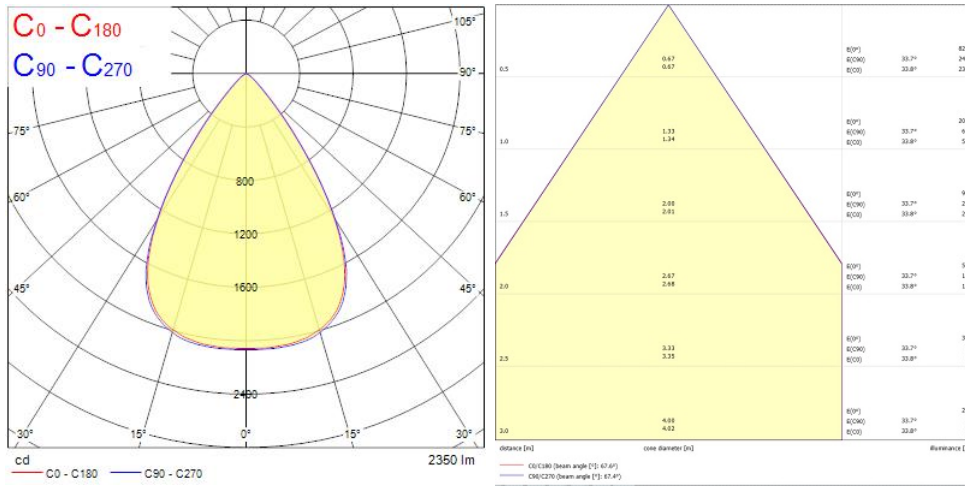
Product EAN number

5410288305127

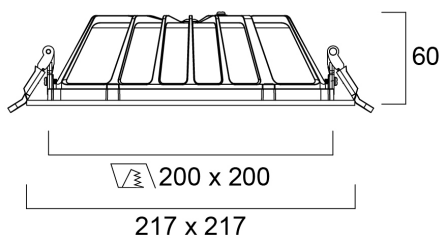
Warranty

5 years

Photometry



Technical drawings



Data table

Insaver Slim UGR19 IP44 200 2350lm 830 Square 0030512

GENERAL DATA

Product name	Insaver Slim UGR19 IP44 200 2350lm 830 Square
Technology	LED
Cap/Base	N/A
Housing	Aluminium
Mount	Ceiling recessed mounting
Operating temperature range (°C)	-20°C...+40°C
E-number FI	4278541
Warranty	5 years

OPTICAL DATA

Fixture luminous flux (lm)	2350
Luminaire efficacy (lm/W)	118
Colour temperature (K)	3000
Light colour	Warm White
CRI (Ra)	80
Colour Variation Initial (SDCM)	3
Glare control	< 19
Photobiological Risk Group	RG1

ELECTRICAL DATA

Total power consumption (W)	20
Primary Supply/Product voltage - min (V)	220
Lamp power factor	0.9
Electrical protection	Class II
Control gear required	No
Control gear type	LED driver constant current
Drive current (mA)	600
Inrush Current (A)	20
Inrush Duration (µs)	101
Glow Wire Test (°C)	850
Energy Efficiency Class (A->G) of contained light source	D

Insaver Slim UGR19 IP44 200 2350lm 830 Square 0030512

Nominal Frequency (Hz)	50/60Hz
LED Flickering Rate	Ultra low (5% or less)
Max. products per 10A C Breaker	38
Connectable conductor cross section - Min (mm ²)	0.75
Connectable conductor cross section - Max (mm ²)	1.5

LIFETIME DATA

Lifespan L70 B50	100000
Lifespan L70 B20	100000
Lifespan L70 B10	100000
Lifespan L80 B50	100000
Lifespan L80 B20	88000
Lifespan L80 B10	80000
Lifespan L90 B50	50000
Lifespan L90 B20	43000
Lifespan L90 B10	39000

PHYSICAL DATA

Housing colour	RAL 9010 - Pure white
IP rating	IP44/20
IK rating	IK07
Diffuser finish	Other
Diffuser material	None
Nominal Product Length (mm)	217
Nominal Product Width (mm)	217
Weight (kg)	0.8

PACKAGING

Single packaging type	Carton
Product EAN number	5410288305127
Packaging single width (cm)	25.0
Packaging single depth (cm)	8.0

Insaver Slim UGR19 IP44 200 2350lm 830 Square 0030512

DUN14 (outer)	15410288305124
---------------	----------------

Packaging outer length / height (cm)	51.5
--------------------------------------	------

SAFETY DATA

Optimal operating condition (°C)	-20-40
----------------------------------	--------

Special purpose lamp	No
----------------------	----

Dry applications use only	No
---------------------------	----

Suitable for household illumination	No
-------------------------------------	----