

TRONIX

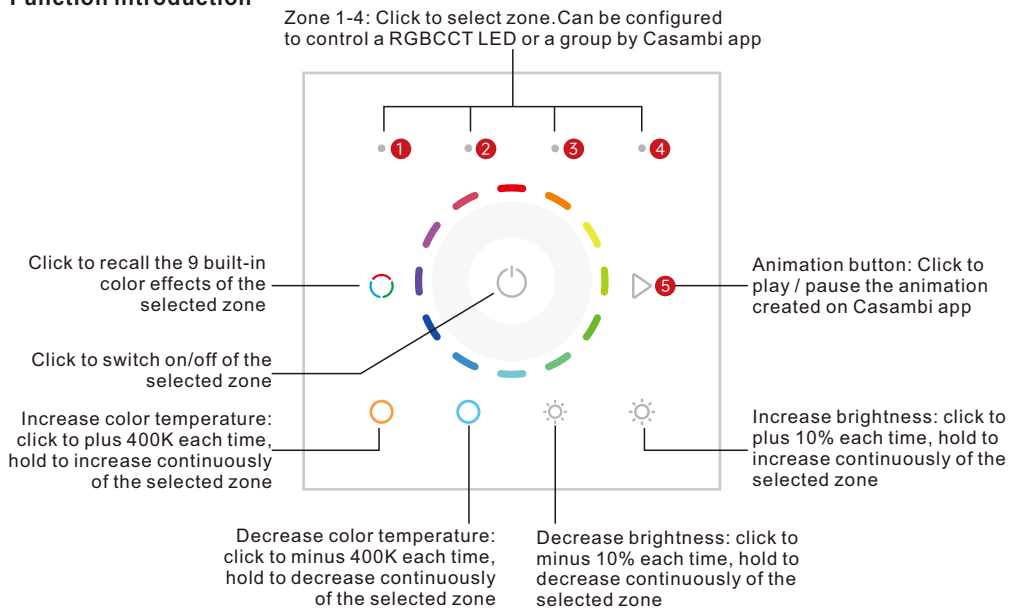
Article 214-224

Casambi RGBCCT Touch Panel

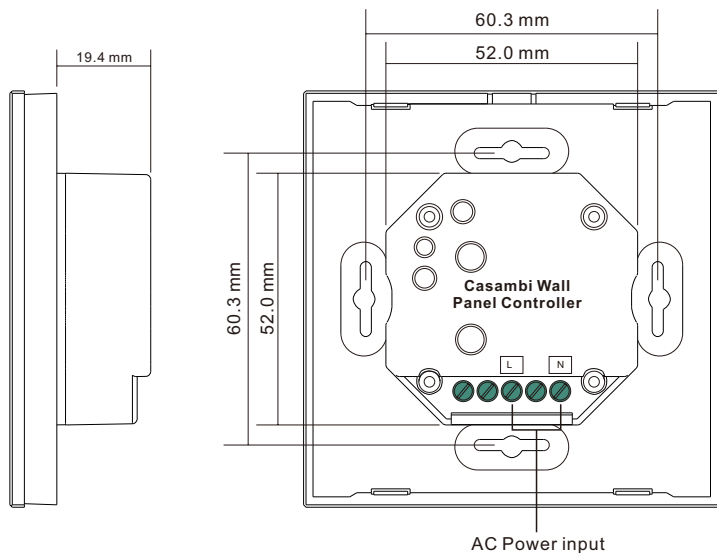
CE FC RoHS COMPLIANT CASAMBI

Important: Read All Instructions Prior to Installation

Function introduction



Front side



Back side

Product Data

Output Signal	BLE signal
Power Supply	100-240VAC
Power consumption	< 15 mA
Operating temperature	0-40°C
Relative humidity	8% to 80%
Dimensions	86x86x29.1mm

- Touch sensitive, glass interface
- Works with Casambi mesh network
- Control RGBCCT color
- Button function can be configured by Casambi app
- Works with our BLE driver, controller, signal converter, sensor series product
- Typical mesh range is over 50 meters line of sight for indoor environment
- Standard size, compatible with existing EU size frame
- Waterproof grade: IP20

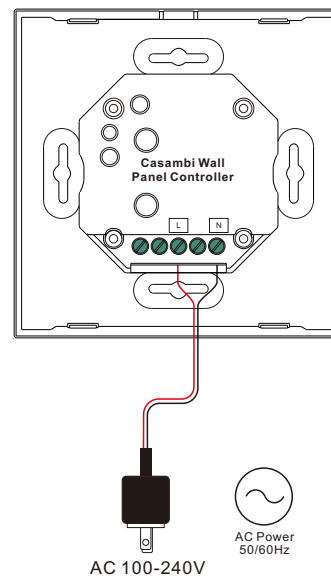
9 built-in color effects:

- 100% red
- 50% red + 50% green
- 100% green
- 50% green + 50% blue
- 100% blue
- 50% blue + 50% red
- 100% red + 50% green + 12% blue
- 100% red + 75% green + 50% blue
- 100% red + 10% green + 100% blue

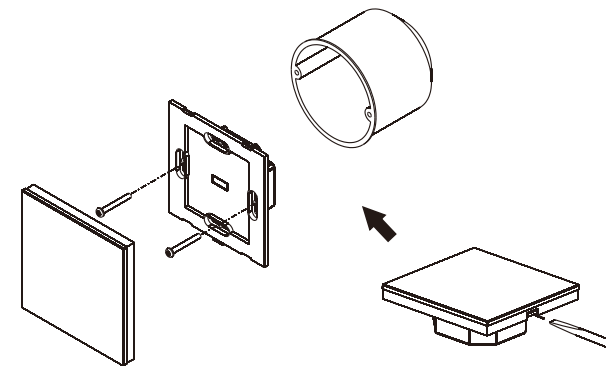
Safety & Warnings

- DO NOT install with power applied to device.
- DO NOT expose the device to moisture.

Wiring diagram



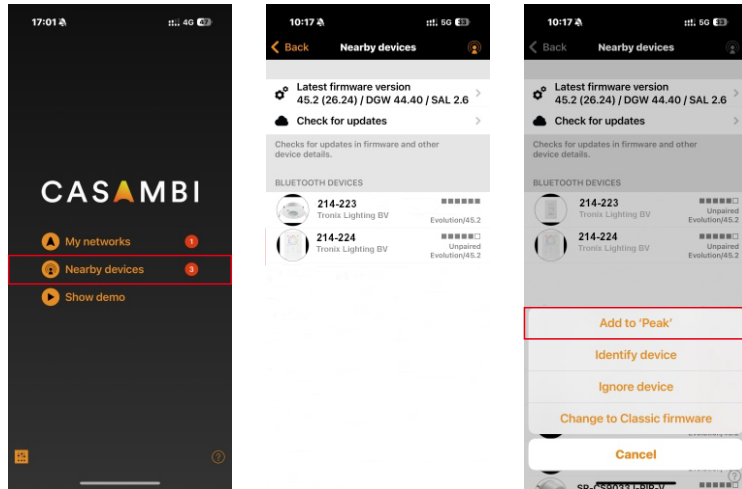
Installation



Configure button function via Casambi APP

1. Add the Casambi touch panel and lighting devices to the same Casambi network.

Open Casambi App, tap "Nearby devices" -> tap the panel to be added -> tap "Add to 'Peak'" to add it to the network -> the panel will be successfully added.



2. Configure the button functions.

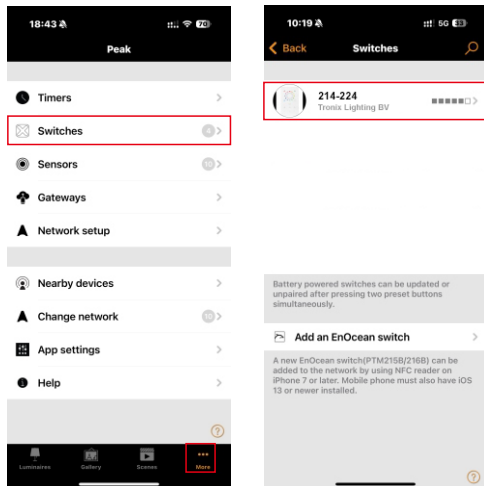
There are five buttons available for configuration:

PUSH BUTTONS 1-4: Corresponding to Zones 1-4 of the RGB CCT panel, you can add a lighting device or a group to each zone.

PUSH BUTTON 5: Corresponding to the animation button of the RGB CCT panel, you can create an animation on the Casambi APP, and then use the panel button to play it.

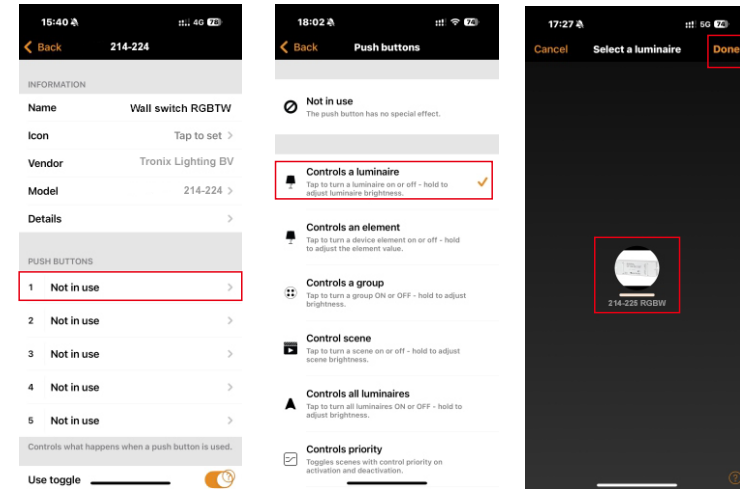
2.1 Find the touch panel

On the More tab -> tap "Switches" and the added panel is displayed -> tap the panel to configure button functions.



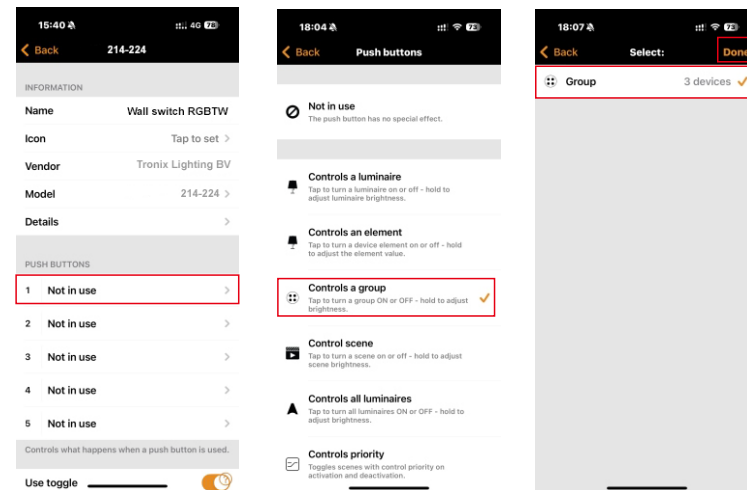
2.2 Add a luminaire to PUSH BUTTONS 1-4

Choose one button (eg.: 1) -> tap "Controls a luminaire" -> select the luminaire to be added -> tap "Done".



2.3 Add a group to PUSH BUTTONS 1-4

Choose one button (eg.: 1) -> tap "Controls a group" -> select the group you have already created -> tap "Done".



2.4 Add an animation to PUSH BUTTON 5.

Choose button 5 -> tap “Control scene” ->tap “Scene” and select the created animation ->tap “Done”.

