

169-276 4000K 60 degree specific configuration
Track spot | black | spot | 8W | 930-935-940 | 45° | dim.

Introduction

Purpose of this Document

This document provides information for 169-276 4000K 60 degree. During measurement, the product is used in a different mode where output power, colour temperature and/or beam angle are changed from factory standard. These adjustments can be made without altering the product and are designed to be set by the installer. In most cases, the options are set through switches on the product.

Results

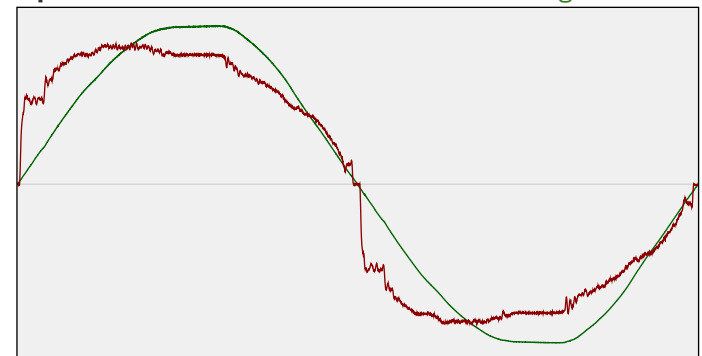
Total input power	8.3 W
Correlated Colour Temperature	4105 K
Total lumen output	525 lm
Efficiency	63 lm/W

Electrical measurement details

Input Power

RMS Input voltage feed. V_{RMS}	233 V
RMS Input current feed. I_{RMS}	0.037 A
Total input power	8.3 W
Frequency of input power	50 Hz
Power factor	0.96
Displacement power factor	0.98
Total harmonic distortion of the current	20.36%
Total harmonic distortion of the voltage	2.61%

Input Power Curve



Efficiency

Radiated power efficiency: 21.5%



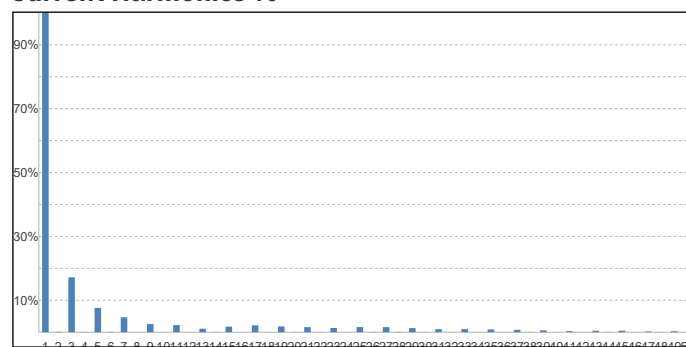
Lumen efficiency: 63 lm/W



Harmonics

3rd Harmonic	17.2%
5th Harmonic	7.6%
7th Harmonic	4.68%
9th Harmonic	2.55%
11th Harmonic	2.23%

Current Harmonics %



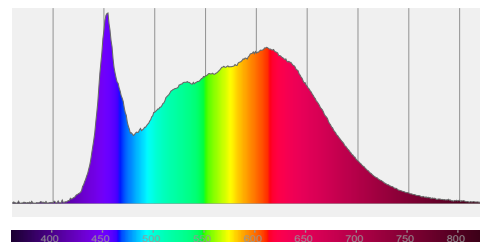
169-276 4000K 60 degree specific configuration

Colour measurement details

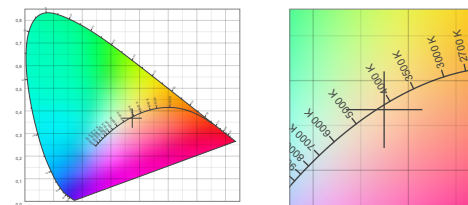
Total lumen output 525 lm
 Correlated Colour Temperature 4105 K
 Colour coordinates CIE 1931 (x;y) = (0.375;0.368)
 Colour deviation from BBL Duv = -0.0026

TM30-18 Colour Fidelity Index R_f 90.4
 TM30-18 Colour Gamut Index R_g 98.4
 Colour Rendering Index (Ra) CRI 94.0
 Colour Rendering Index. (red component) R_9 = 67.9

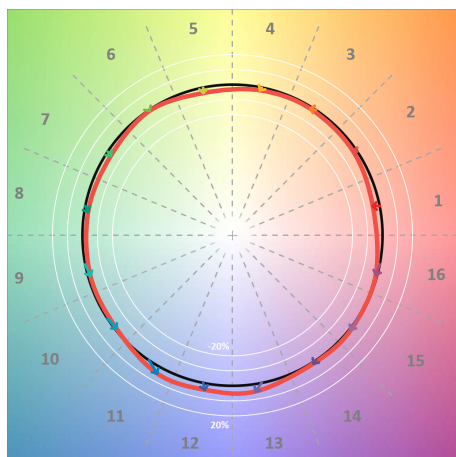
Colour Quality Scale CQS = 91.6
 Television Lighting Consistency Index TLCI = 93



Relative spectral power distribution



TM30 details

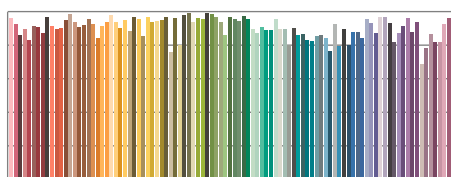


TM30 Colour vectors per hue bin

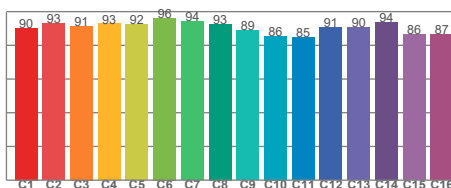


TM30 Colour distortion

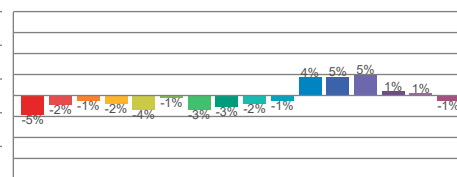
Hue Bin	R_f	Shifts (%)	
		Chroma	Hue
C1	90	-5%	1%
C2	93	-2%	2%
C3	91	-1%	4%
C4	93	-2%	1%
C5	92	-4%	1%
C6	96	-1%	0%
C7	94	-3%	1%
C8	93	-3%	3%
C9	89	-2%	8%
C10	86	-1%	9%
C11	85	4%	9%
C12	91	5%	2%
C13	90	5%	-5%
C14	94	1%	-3%
C15	86	1%	-9%
C16	87	-1%	-7%



TM30-18 R_f -values per reference colour

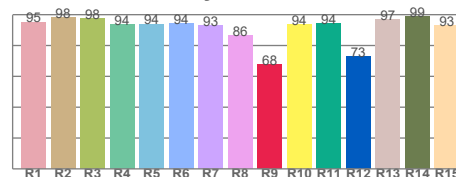


TM30-18 R_f -values per hue bin

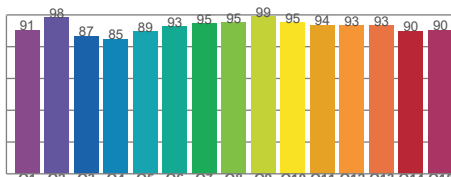


TM30 Chroma shift

Colour Quality details



Colour Rendering Index



Colour Quality Scale