

Features

- Insaver Slim is a ceiling recessed LED downlight (IP44 from the front), Die-cast aluminium body, loop in loop out connector for quick installation, Non dimmable LED driver, 3000K; UGR <19 with shallow product depth 60mm. The range features a multipower functionality where the luminous flux of the luminaire can be tailored to local needs by only setting a quick selector switch on the driver. 8 steps available with adjustable lumen output of 4050 – 4800lm at 3000K . Meets TP(a) requirements.

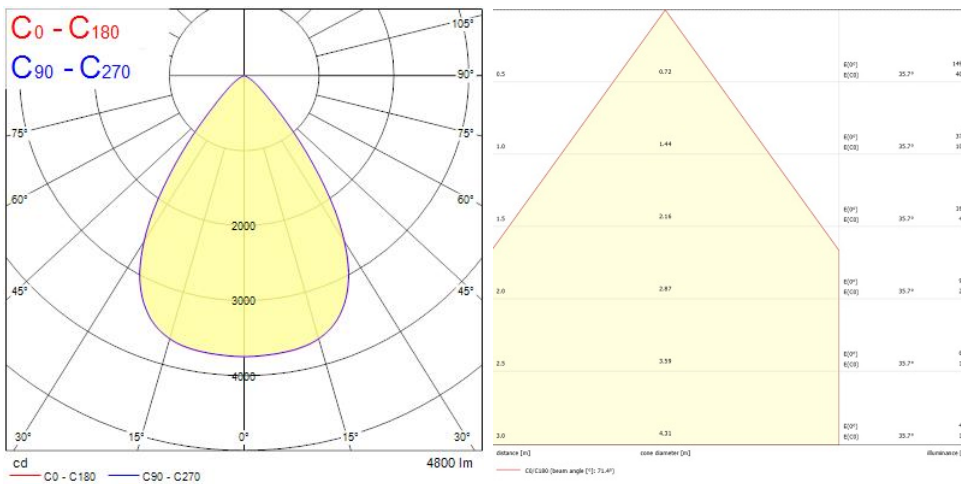
Product Overview

| | |
|---------------------------------|---|
| Product name | Insaver Slim IP44 225 Multi4050- 4800lm 830 |
| Technology | LED |
| Cap/Base | N/A |
| Housing | Aluminium |
| Mount | Ceiling recessed mounting |
| E-number FI | 4278534 |
| Fixture luminous flux (lm) | 4800 |
| Luminaire efficacy (lm/W) | 117 |
| Colour temperature (K) | 3000 |
| Light colour | Warm White |
| CRI (Ra) | 80 |
| Colour Variation Initial (SDCM) | 3 |
| Glare control | < 22 |
| Photobiological Risk Group | RG1 |
| Total power consumption (W) | 41 |
| Electrical protection | Class II |
| Control gear type | LED driver constant current |
| LED Flickering Rate | Ultra low (5% or less) |
| Housing colour | RAL 9010 - Pure white |

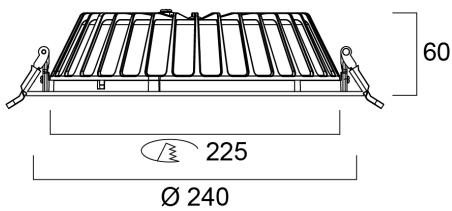
Insaver Slim IP44 225 Multi4050- 4800lm 830 0030508

| | |
|--------------------|---------------|
| IP rating | IP44/20 |
| IK rating | IK07 |
| Product EAN number | 5410288305080 |
| Warranty | 5 years |

Photometry



Technical drawings



Data table

GENERAL DATA

| | |
|----------------------------------|---|
| Product name | Insaver Slim IP44 225 Multi4050- 4800lm 830 |
| Technology | LED |
| Cap/Base | N/A |
| Housing | Aluminium |
| Mount | Ceiling recessed mounting |
| Operating temperature range (°C) | -20°C...+40°C |
| E-number FI | 4278534 |
| Warranty | 5 years |

OPTICAL DATA

| | |
|---------------------------------|------------|
| Fixture luminous flux (lm) | 4800 |
| Luminaire efficacy (lm/W) | 117 |
| Colour temperature (K) | 3000 |
| Light colour | Warm White |
| CRI (Ra) | 80 |
| Colour Variation Initial (SDCM) | 3 |
| Glare control | < 22 |
| Photobiological Risk Group | RG1 |

ELECTRICAL DATA

| | |
|--|-----------------------------|
| Total power consumption (W) | 41 |
| Primary Supply/Product voltage - min (V) | 220 |
| Lamp power factor | 0.9 |
| Electrical protection | Class II |
| Control gear required | No |
| Control gear type | LED driver constant current |
| Drive current (mA) | 1050 |
| Inrush Current (A) | 82 |
| Inrush Duration (µs) | 40 |
| Glow Wire Test (°C) | 850 |

Insaver Slim IP44 225 Multi4050- 4800lm 830 0030508

| | |
|--|------------------------|
| Energy Efficiency Class (A->G) of contained light source | D |
| Nominal Frequency (Hz) | 50/60Hz |
| LED Flickering Rate | Ultra low (5% or less) |
| Max. products per 10A C Breaker | 25 |
| Connectable conductor cross section - Min (mm ²) | 0.75 |
| Connectable conductor cross section - Max (mm ²) | 1.5 |

LIFETIME DATA

| | |
|------------------|--------|
| Lifespan L70 B50 | 100000 |
| Lifespan L80 B20 | 88000 |
| Lifespan L80 B10 | 80000 |
| Lifespan L90 B10 | 39000 |

PHYSICAL DATA

| | |
|-------------------------------|-----------------------|
| Housing colour | RAL 9010 - Pure white |
| IP rating | IP44/20 |
| IK rating | IK07 |
| Diffuser finish | Other |
| Diffuser material | None |
| Nominal Product Diameter (mm) | 240 |
| Weight (kg) | 0.846 |

PACKAGING

| | |
|--------------------------------------|----------------|
| Single packaging type | Carton |
| Product EAN number | 5410288305080 |
| Packaging single width (cm) | 25.5 |
| Packaging single depth (cm) | 8.0 |
| DUN14 (outer) | 15410288305087 |
| Packaging outer length / height (cm) | 53.0 |

SAFETY DATA

Insaver Slim IP44 225 Multi4050- 4800lm 830 0030508

| | |
|--|--------|
| Optimal operating condition (°C) | -20-40 |
| Special purpose lamp | No |
| Dry applications use only | No |
| Suitable for household illumination | No |