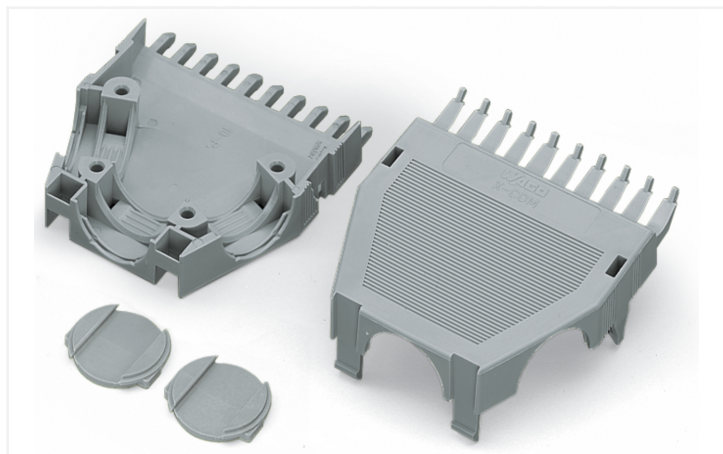


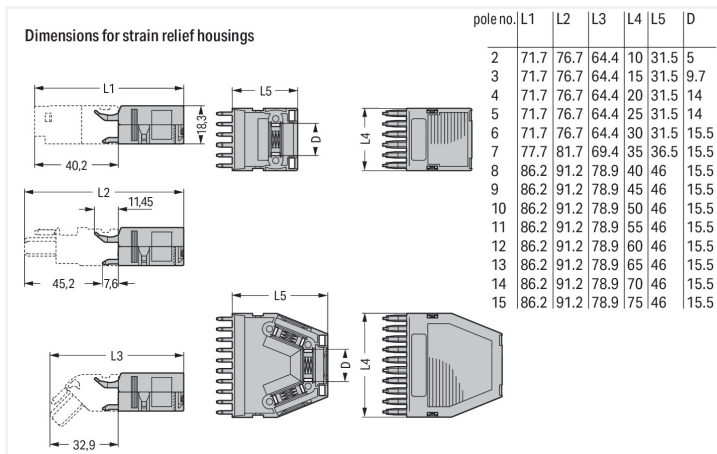
# Data Sheet | Item Number: 769-1610

Strain relief housing; for female and male connectors; 2 parts; Pin spacing 5 mm; 10-pole; gray

<https://www.wago.com/769-1610>



Color: ■ gray



Dimensions in mm  
Dimensions in mm

## Connection Data

### Connection 1

Pole number 10

## Physical data

Width 50 mm / 1.969 inches

Height 18.3 mm / 0.72 inches

Depth 46 mm / 1.811 inches

## Material data

Note (material data) [Information on material specifications can be found here](#)

Color gray

Fire load 0.351 MJ

Weight 11.6 g

## Commercial data

Product Group 18 (X-COM-System)

PU (SPU) 25 pcs

Packaging type Box

Country of origin DE

GTIN 4017332729697

Customs tariff number 39269097900



**Product Classification**

UNSPSC	39121421
eCl@ss 10.0	27-14-11-92
eCl@ss 9.0	27-14-11-92
ETIM 9.0	EC002848
ETIM 10.0	EC002848
ECCN	NO US CLASSIFICATION

**Environmental Product Compliance**

RoHS Compliance Status	Compliant, No Exemption
------------------------	-------------------------

**Downloads**

**Environmental Product Compliance**

Compliance Search

Environmental Product Compliance 769-1610	<a href="#">↓</a>
---	-------------------

**Documentation**

Bid Text

769-1610	19.02.2019	xml 2.64 KB	<a href="#">↓</a>
769-1610	23.05.2017	doc 23.00 KB	<a href="#">↓</a>

**CAD/CAE-Data**

CAD data

2D/3D Models 769-1610	<a href="#">↓</a>
--------------------------	-------------------

CAE data

EPLAN Data Portal 769-1610	<a href="#">↓</a>
WSCAD Universe 769-1610	<a href="#">↓</a>
ZUKEN Portal 769-1610	<a href="#">↓</a>

## 1 Compatible Products

### 1.1 Optional Accessories

#### 1.1.1 Installation

##### 1.1.1.1 Mounting accessories



**Item No.: 209-174**

Cable clamp; for strain relief; 7 or more poles

**Item No.: 209-173**

Fixing screw; for cable clamp; 7 or more poles

### 1.1.2 Marking

#### 1.1.2.1 Marker



**Item No.: 209-501/000-006**

WSB marking card; as card; not stretchable; plain; snap-on type; blue



**Item No.: 209-501/000-007**

WSB marking card; as card; not stretchable; plain; snap-on type; gray



**Item No.: 209-501/000-023**

WSB marking card; as card; not stretchable; plain; snap-on type; green



**Item No.: 209-501/000-017**

WSB marking card; as card; not stretchable; plain; snap-on type; light green



**Item No.: 209-501/000-012**

WSB marking card; as card; not stretchable; plain; snap-on type; orange



**Item No.: 209-501/000-005**

WSB marking card; as card; not stretchable; plain; snap-on type; red



**Item No.: 209-501/000-024**

WSB marking card; as card; not stretchable; plain; snap-on type; violet



**Item No.: 209-501**

WSB marking card; as card; not stretchable; plain; snap-on type; white

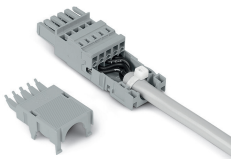


**Item No.: 209-501/000-002**

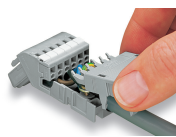
WSB marking card; as card; not stretchable; plain; snap-on type; yellow

## Installation Notes

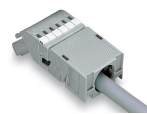
### Installation



2- to 5-pole strain relief housings feature one cable outlet (rear side).  
6- to 7-pole strain relief housings feature one cable outlet (rear side).  
8- to 9-pole strain relief housings feature two cable outlets and one cover.  
10- to 16-pole strain relief housings feature three cable outlets and two covers.

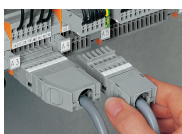


Snapping on a strain relief housing.



Snap-on type strain relief housing, consists of strain relief support and housing, 6-pole and 1-conductor female plugs, angled, 6-pole

## Application



Application  
Snap-on type strain relief housings for 769 Series

Subject to changes. Please also observe the further product documentation!

---

Current addresses can be found at: [www.wago.com](http://www.wago.com)