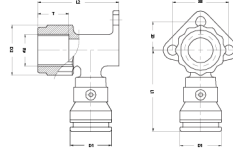


2SK-2005: Backplate elbow female 20x3/4"



Commercial information

The construction of the push fitting shows that Henco Vision is the result of sophisticated product development. All of its components have been made with the greatest precision and are manufactured from the best materials. Henco Vision push fittings are made from a high-quality synthetic material with a unique range of properties:

- Extremely resistant to pressure and temperature.
- Outstanding mechanical strength.
- Enormous flexibility: can bend up to 10° at 95°C.
- Perfectly suitable for drinking water and foods Henco Vision push fittings can be used for both sanitary and heating applications.

Ease of use - fast assembly: The Henco push fitting guarantees an extremely fast and reliable connection. All you need to make a perfect connection is a pipe cutter and a calibrator. Pressing tools are not required. You only need to follow three steps for a fast and reliable connection, in combination with the Henco PE-Xc/AL/PE-Xc multilayer pipe.

Certificates

ETA, SINTEF, STF, GOST-R, TSU, ATG, RISE, ACS, PZH, EMI, KIWA

Applications

Potable water, Heating, Cooling, Sanitary



Solutions

Building installations, Industry, Utility

Technical characteristics

Housing material	Polyvinylidene fluoride (PVDF)	Medium temperature (continuous)	-10 70 Degrees celsius
Surface protection	Untreated	Max. operating pressure at 20 °C	10 Bar
Shape	Right-angled		
System specific	✓		
Nominal diameter connection 2	3/4 inch (20)		
Connection	Insert (push-fitting)		
Thread size tap connection	3/4 inch		
DVGW quality mark for gas	✗		
DVGW quality mark for water	✓		
Compliant with NF 545	✗		
KIWA certified	✓		
Gastec QA mark	✗		
KOMO certified	✓		
Type approval according to BBR/EKS	✗		

Related products

Product code	GTIN	Description	Image
PK-TOOL05	05414764030015	Henco Wrench for PK/SK fittings with threading 3/4"	
VISION-KEY20	05414764030015	Henco Vision key Ø20	
SK-STOPCLIP20	05414764030015	Henco Reusable stop and clip for push fit connection Ø20	