

# Eaton 5PX G2 UPS 1–3 kVA

Secure, connected power protection with extended runtime designed for distributed IT

## Made for distributed IT

- Ideal for servers, switches, storage and other distributed IT loads that keep your business running
- Flexible UPS can be rackmounted in a traditional 2-post or 4-post rack or used in a tower form
- Quieter operation than legacy models with fewer fans required in each UPS

## Deployments simplified

- Mass UPS firmware upgrades without dropping the load
- Easy startup configuration wizard
- DHCP enabled by default for network-bundle models

## Stay connected, securely

- Reduce risk of intrusion with the Gigabit Network Card (NETWORK-M3), which meets both UL and IEC cybersecurity standards
- Remote monitoring and management of your deployment is made easy with Eaton's Brightlayer software portfolio, which enables graceful shutdown of servers and virtualized environments during extended power outages

## Resolve issues quickly

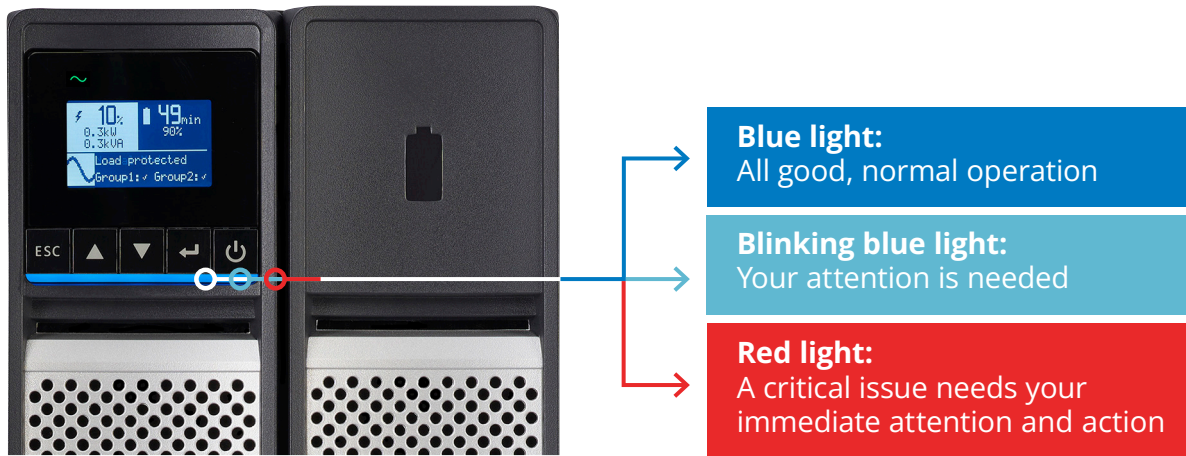
- Troubleshoot UPS status and alarms remotely when used with the Gigabit Network Card
- LED status bar provides quick and clear visual diagnostics in all environments
- Higher contrast interface for easier visibility, plus detailed alarms and notifications to help diagnose the issue the first time
- 24/7 technical support available, along with a standard three-year warranty on the UPS and batteries



Powering Business Worldwide



# Light up the room.



## LED status bar allows for quick and easy status updates at-a-glance

## A model to fit your needs.

- **Support more equipment** with the maximum power (watts) possible at each power rating, otherwise known as unity power factor
- **Reduced depth** in the 2 to 3 kVA short-depth models conserves space to allow for high-density wallmount rack options
- **UPS ship-in-rack option** for integration into packaged deployments, simplifying set up and getting you online quicker (available with the 4-post rail kit)
- **Increased standard runtime** by at least 25% on 1.5 and 2 kVA models compared to the legacy 5PX UPS
- **Enhanced surge protection** to keep your equipment safe in your branch offices and IT closets
- **Reduced number of fans** and the capability to completely turn off fans when the unit is fully charged to reduce noise pollution and promote energy efficiency



5PX G2 4-post mounting kits are rated (ISTA 3E) to support the weight of a UPS/EBM when mounted in a rack and being transported

# Simplified fleet management

The 5PX G2 UPS (1-3 kVA) is compatible with the optional cybersecure Gigabit Network Card, allowing you to monitor and manage your UPS fleet remotely for greater convenience and peace of mind.

For smaller environments, you can connect to UPSs using a web browser and receive email alerts. For larger deployments spanning multiple locations, 5PX G2 UPSs integrate smoothly via SNMP with digital solutions from our [Brightlayer portfolio](#).

**Brightlayer Disaster Avoidance software** helps you monitor, manage and control power equipment in physical or virtual environments with up to 25 UPSs and PDUs.

- Gracefully shut down IT equipment in the order required for safe and quick recovery from outages.
- Keep critical workloads running longer during outages by limiting server power consumption and suspending non-critical virtual machines.

**Brightlayer Distributed IT software** helps you remotely monitor and control up to thousands of UPSs and PDUs at remote sites in any location.

- Know what's happening with real-time reports, trend charts, dashboards and alerts prioritized by severity.
- Troubleshoot and resolve issues more quickly.
- Remotely control load segments regardless of vendor.
- Update firmware remotely to improve cybersecurity.
- Leverage integrations with virtualization platform leaders.
- Gracefully shut down IT equipment.

**Brightlayer DCIM software** helps you manage power, space, connectivity and cooling to maximize uptime while minimizing capital and operating costs.

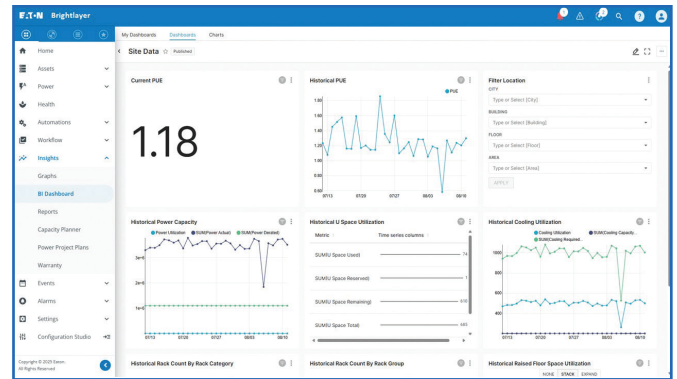
- Gain efficiencies and reduce costs with real-time data and automated alerts.
- View 2D and 3D visualizations and automated reports.
- Gain near-real-time visibility into key performance indicators.

**Brightlayer EPMS software** provides advanced monitoring and management of valuable power equipment and environmental conditions, with powerful diagnostic tools.

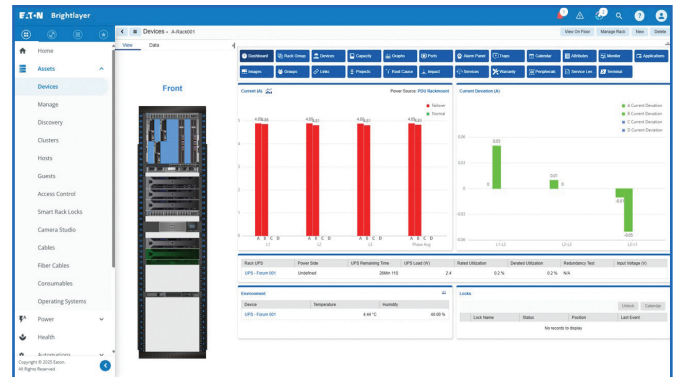
- Monitor conditions and react to issues with 24/7 visibility into electrical power assets, regardless of location or vendor.
- Identify and resolve issues through power quality and waveform analysis, high-resolution datasets and one-line diagrams.
- Access sophisticated dashboards, trend charts, energy modelling and reports.

**Brightlayer Remote Monitoring Service**, also known as PredictPulse, provides 24/7 remote monitoring and predictive analytics to forecast failures before issues arise and dispatches field service technicians when needed.

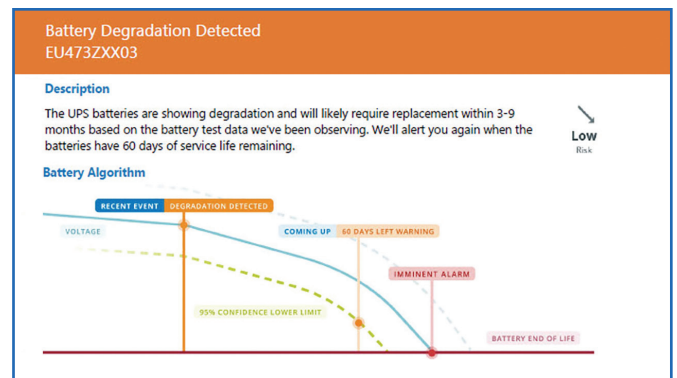
- Know about future component failures before they happen.
- Gain fast response and repairs from Eaton technicians.
- Access real-time health trends, alarms and outages prevented.



Remote power management dashboard from Brightlayer Distributed IT software.



Data center rack view from Brightlayer DCIM software.



Battery condition notification from Brightlayer Remote Monitoring Service.

# Certified cybersecurity

The 5PX G2 UPS is compatible with Eaton's cybersecure network management card (**NETWORK-M3**), which is UL 2900-1 and IEC 62443-4-2 listed, providing industry-leading cybersecurity and automation features.

## Zero-trust architecture

- Minimizes cybersecurity vulnerabilities through hardware root of trust, enabling secure boot and complete chain of trust with private hardware key encryption.

## Zero-touch provisioning

- Automatically configures equipment to save time and reduce errors in large-scale deployments.

## User-configurable firewall

- Reduces your organization's attackable surface area.
- Helps meet network/security compliance requirements.
- Supports IP white list.

## RESTful API

- Allows you to easily integrate networked UPSs with native systems and automate M2M interactions.

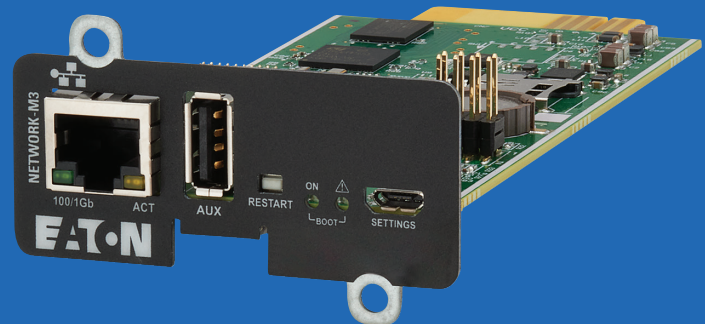
## Secure access via web browser or SNMP

- Access UPSs using the secure web browser interface or integrate with a network management system via SNMP.



You can upgrade 5PX G2 UPS firmware remotely through the optional network card to keep UPSs at all your remote sites updated with the latest features and security.

**Firmware updates are free of charge and do not require a service contract.**



# Ready for virtualization, HCI and AI

Brightlayer software enables seamless integration and intelligent coordination with virtualized, hyperconverged and generative AI infrastructures. Support for complex orchestrations during blackouts and other power events allows you to extend runtime, preserve data and gracefully shut down or migrate servers per your preferences.

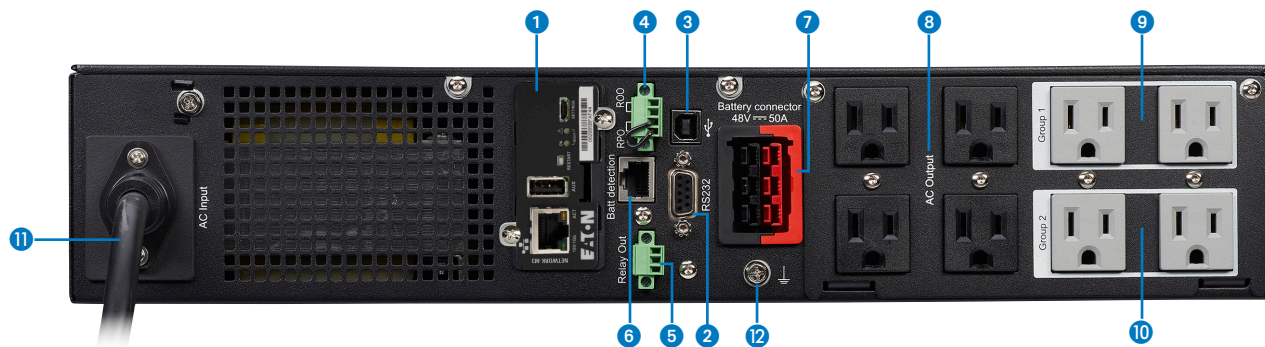
Eaton is the leader in power management for virtualization platforms and has more than 500 hours invested in testing with alliance partners like Cisco, Dell, HPE, NetApp, Nutanix, Scale Computing and VMware.

Learn more at [Eaton.com/alliances](https://www.eaton.com/alliances)



# Rear panel overview

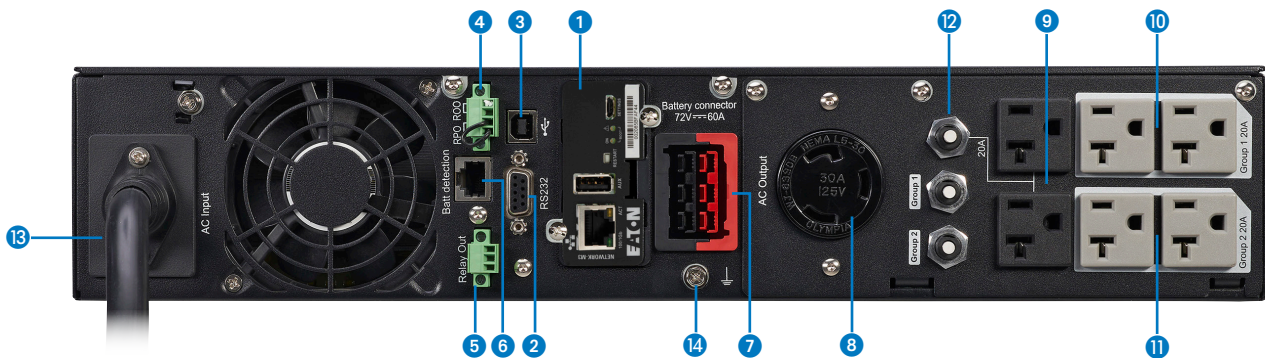
## Model 5PX1500RTG2



- 1 NETWORK-M3 card (optional)
- 2 RS-232 serial communication port (cable included)
- 3 USB port (cable included)
- 4 Remote power off (RPO) and remote on/off (ROO) port
- 5 Output relay port
- 6 External battery module (EBM) detection port
- 7 EBM connector
- 8 (4) 5-15R managed outlets (primary group)
- 9 (2) 5-15R managed outlets (load segment group 1)
- 10 (2) 5-15R managed outlets (load segment group 2)
- 11 10-foot line cord with 5-15P
- 12 Ground screw

# Rear panel overview

## Model 5PX3000RTG2



- 1 NETWORK-M3 card (optional)
- 2 RS-232 serial communication port (cable included)
- 3 USB port (cable included)
- 4 Remote power off (RPO) and remote on/off (ROO) port
- 5 Output relay port
- 6 External battery module (EBM) detection port
- 7 EBM connector
- 8 (1) L5-30R managed outlet (primary group)
- 9 (2) 5-20R managed outlets (primary group)
- 10 (2) 5-20R managed outlets (load segment group 1)
- 11 (2) 5-20R managed outlets (load segment group 2)
- 12 Outlet group circuit breaker protection
- 13 10-foot line cord with L5-30P
- 14 Ground screw

## 5PX G2 MODEL SELECTION GUIDE

The 5PX G2 comes as a stand-alone UPS or as part of a network bundle for easy configuration and deployment. For complete specifications, including interactive battery runtime graphs, visit [Eaton.com/5PXG2](http://Eaton.com/5PXG2).

Catalog number	Rating (VA/watts)	Input connection	Output receptacles	Dimensions (H x W x D), in	Net weight, lb	Internal runtime (min) Full / half load	Plus 1 EBM Full/ half load
<b>120V, 50/60Hz rack/tower models</b>							
5PX1000RTG2	1000/1000	5-15P, 10 ft.	(8) 5-15R	3.4 (2U) x 17.2 x 17.6	44.5	6/17	35/82
5PX1500RTG2	1440/1440	5-15P, 10 ft.	(8) 5-15R	3.4 (2U) x 17.2 x 17.6	50.7	5/15	26/60
5PX2000RTG2	1950/1950	5-20P, 10 ft.	(1) 5-20R, (6) 5-20R	3.4 (2U) x 17.4 x 23.7	65.3	4/12	27/62
5PX3000RTG2	3000/3000	L5-30P, 10 ft.	(1) L5-30R, (6) 5-20R	3.4 (2U) x 17.4 x 23.7	74.5	3/9	17/41

Catalog number	Rating (VA/watts)	Input connection	Output receptacles	Dimensions (H x W x D), in	Net weight, lb	Internal runtime (min) Full / half load	Plus 1 EBM Full/ half load
<b>120V, 50/60Hz rack/tower network card bundles with NETWORK-M3</b>							
5PX1000RTNG2	1000/1000	5-15P, 10 ft.	(8) 5-15R	3.4 (2U) x 17.2 x 17.6	44.5	6/17	35/82
5PX1500RTNG2	1440/1440	5-15P, 10 ft.	(8) 5-15R	3.4 (2U) x 17.2 x 17.6	50.7	5/15	26/60
5PX2000RTNG2	1950/1950	5-20P, 10 ft.	(1) L5-20R, (6) 5-20R	3.4 (2U) x 17.2 x 23.7	65.3	4/12	27/62
5PX2000RT3UNG2	1950/1950	5-20P, 10 ft.	(1) L5-20R, (6) 5-20R	5.1 (3U) x 17.2 x 19.0	64.2	4/12	27/62
5PX3000RTNG2	3000/3000	L5-30P, 10 ft.	(1) L5-30R, (6) 5-20R	3.4 (2U) x 17.2 x 23.7	74.5	3/9	17/41
5PX3000RT3UNG2	3000/3000	L5-30P, 10 ft.	(1) L5-30R, (6) 5-20R	5.1 (3U) x 17.2 x 19.0	72.8	3/9	17/41

Catalog number	Rating (VA/watts)	Input connection	Output receptacles	Dimensions (H x W x D), in	Net weight, lb	Internal runtime (min) Full / half load	Plus 1 EBM Full/ half load
<b>Global UPS, 208/230V, 50/60Hz rack/tower models</b>							
5PX1500HRTG2	1500/1500	C14	(8) C13	3.4 (2U) x 17.2 x 17.6	49.4	5/14	25/57
5PX2200HRTG2	2200/2200	L6-20P, 6 ft., (Detachable)	(2) C19, (8) C13	3.4 (2U) x 17.2 x 23.7	62.2	3.5/10	23/54
5PX3000HRTG2	3000/3000	L6-20P, 6 ft., (Detachable)	(2) C19, (8) C13	3.4 (2U) x 17.2 x 23.7	69.9	3/9	17/41

Catalog number	Rating (VA/watts)	Input connection	Output receptacles	Dimensions (H x W x D), in	Net weight, lb	Internal runtime (min) Full / half load	Plus 1 EBM Full/ half load
<b>Global UPS, 208/230V, 50/60Hz rack/tower network card bundles with NETWORK-M3</b>							
5PX3000HRTNG2	3000/3000	L6-20P, 6 ft., (Detachable)	(2) C19, (8) C13	3.4 (2U) x 17.2 x 23.7	69.9	3/9	17/41

Catalog number	Description	DC voltage	Dimensions (H x W x D), in	Net weight, lb
<b>5PX G2 extended battery module options</b>				
5PXEBM48RTG2	Extended battery module for 5PX1000RTG2, 5PX1000RTNG2, 5PX1500RTG2, 5PX1500RTNG2, 5PX1500HRTG2	48V	3.4 (2U) x 17.2 x 17.6	61.3
5PXEBM72RTG2	Extended battery module for 5PX2000RTG2, 5PX2000RTNG2, 5PX2200HRTG2, 5PX3000RTG2, 5PX3000RTNG2, 5PX3000HRTG2, 5PX3000HRTNG2	72V	3.4 (2U) x 17.2 x 23.7	89.1
5PXEBM72RT3UAG2	Extended battery module for 5PX2000RT3UNG2, 5PX3000RT3UNG2	72V	5.1 (3U) x 17.2 x 19.0	87.5

Catalog number	Description	Input connection	Output connection	Dimensions (H x W x D), in
<b>5PX G2 power distribution (PDU) and maintenance bypass (MBP) options</b>				
EHBPL1500R-PDU1U	1.5 kVA HotSwap MBP	5-15P	(6) 5-15R	2.1 x 17.3 x 3.8
EHBPL2000R-PDU1U	2 kVA HotSwap MBP	5-20P	(6) 5-20R	2.1 x 17.3 x 3.8
EHBPL3000R-PDU1U	3 kVA HotSwap MBP	L5-30P	(5) 5-20R, (1) L5-30R	2.1 x 17.3 x 3.8

### Additional options

Catalog number	Description
103007018-5591	Two-post rack mounting rail kit (supports 2U models only)
RK4PRS	Ship-in-rack 4-post rail kit (required to ship 5PX G2 while mounted in a rack on a shock pallet)
NETWORK-M3	Gigabit Network Card
INDGW-M3	Industrial Gateway Card (Modbus + Relays + Network Management)
RELAY-MS	Relay/Serial Interface Card
EMPDT1H1C2	Environmental Monitoring Probe (EMP) Gen 2 for use with NETWORK-M3 or INDGW-M3
EBMCL48RT	5PX G2 2M EBM extension cable for 48V EBMs (use with 1–1.5 kVA models)
EBMCL72	5PX G2 2M EBM extension cable for 72V EBMs (use with 2–3 kVA models)

### What's in the box

- Tower pedestal feet
- Four-post rail kit
- Quick start guide
- Safety guide
- USB cable
- RS-232 cable
- (2) IEC C13 to IEC C14 jumper cables (208V/230V "H" models)



To interact with the Eaton 5PX G2 UPS, please visit: [Eaton.com/5PXG2](http://Eaton.com/5PXG2)



**Eaton**  
1000 Eaton Boulevard  
Cleveland, OH 44122  
United States  
Eaton.com

© 2026 Eaton  
All Rights Reserved  
Printed in USA  
BR153153EN / 25-07-058  
February 2026

Eaton is a registered trademark.  
All other trademarks are property of their respective owners.  
Follow us on social media to get the latest product and support information.

