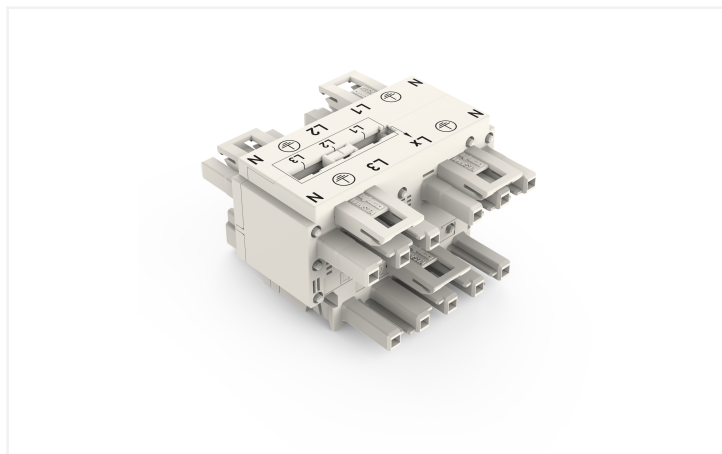
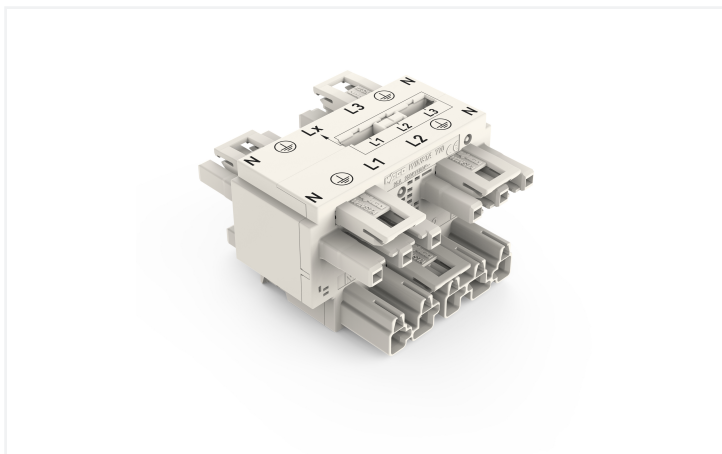


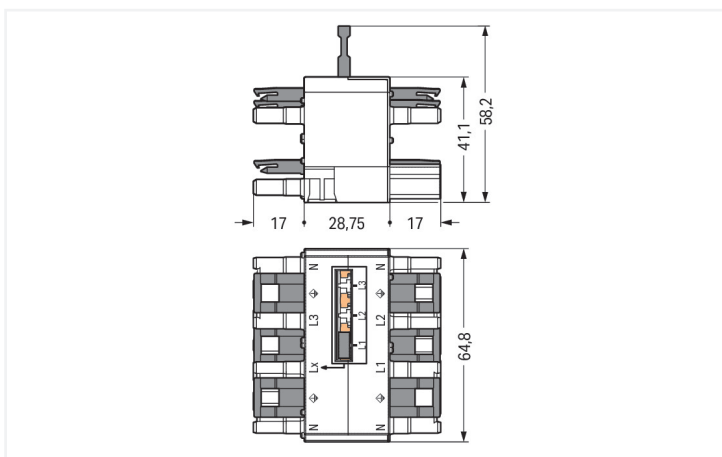
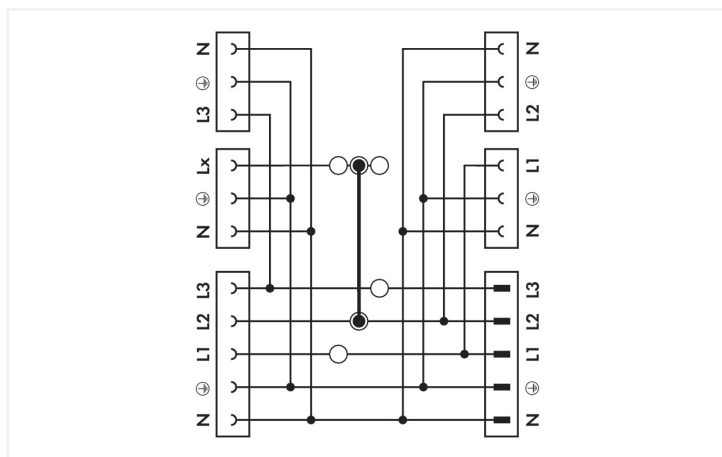
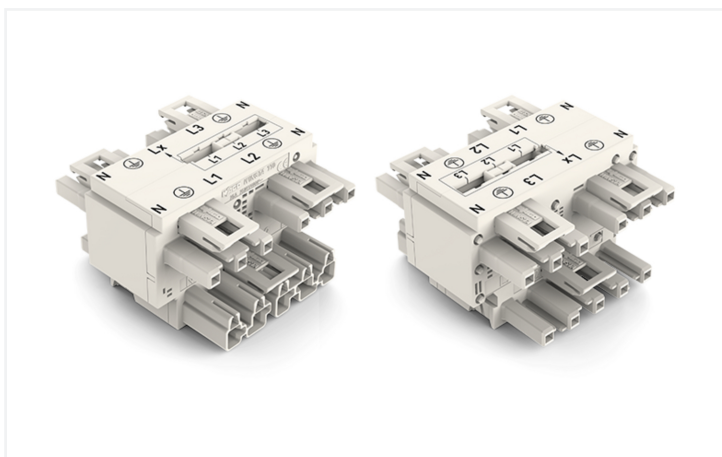
Data Sheet | Item Number: 770-690

Three-phase to single-phase distribution connector; with phase selection; 5-pole/3-pole; Cod. A; 1 input; 5 outputs; white

<https://www.wago.com/770-690>



Color: ■ white



Dimensions in mm

Distribution connector WINSTA® MIDI rated current 25 A

The WINSTA® MIDI distribution connector A coding provides the foundation for assembly of solid and fine-stranded conductors. On PCBs, in control cabinets or for connecting lights – pluggable installation connectors from WAGO allow you to make connections according to a huge variety of requirements in seconds. The coding options reduce installation errors, allowing fast, maintenance-free wiring of all components. The pluggable installation

connector offers touch-proof protection with live components in accordance with protection type IP20 (When mated: IP2xC (These compact connectors are not designed for use in open, easily accessible areas!)). The WINSTA® MIDI pluggable installation connector with A coding in white or black is normally used for general mains applications in power distribution. This pluggable installation connector can be used for electrical currents up to 25 A. Thus the product is ideally suitable for high power loads. WINSTA® MIDI with Push-in CAGE CLAMP® spring pressure connection technology is found in a broad range of individual products you can use for quick, easy and maximally flexible electrical installation.

Push-in CAGE CLAMP® spring pressure connection technology – pluggable installation instead of laborious screw connections!

The WINSTA® Pluggable Connection System is ideally tailored to the very strict requirements of building installation. It makes electrical installation pluggable, and consequently faster, more reliable, and error-free. Using this pre-assembled system decreases time spent on assembly and errors during installation at the construction site. Take advantage of the pluggable version of our maintenance-free spring pressure connection technology too! Plan your installation with with protection type IP20 from WAGO.

- protection against mismatching eliminates errors
- for automation controllers
- with A coding for use in many general mains applications
- ready for immediate use
- quick replacement of defective units during ongoing operation

Electrical data						
Ratings per		IEC/EN 60664-1			Ratings per IEC/EN 2	
Overvoltage category		III	III	II	Rated voltage (III / 3)	250 V
Pollution degree		3	2	2	Rated impulse withstand voltage (III/3)	4 kV
Nominal voltage		400 V	-	-		
Rated impulse withstand voltage		6 kV	-	-		
Rated current		25 A	-	-		
Approvals per		UL 1977			General information	
Rated voltage		600 V			Note on contact resistance	approx. 1 mΩ of contact resistance approx. 0.25 mΩ contact transition plug/ socket
Rated current		23 A				

Connection Data		
Total number of potentials	5	Connection 1
		Pole number
		5

Physical data	
Pin spacing	10 mm / 0.394 inches
Width	64.8 mm / 2.551 inches
Height	58.2 mm / 2.291 inches
Depth	62.75 mm / 2.47 inches

Mechanical data	
Use	General mains applications
Coding	A
Marking	N ⊕ L1 L2 L3
Mating force of a plug-in connection	Approx. 20 ... 70 N (depending on pole number)
Retention force of a plug-in connection	When locked: > 80 N
Unmating force of a plug-in connection	Unlocked: approx. 20 ... 70 N (depending on pole number)
Number of mating cycles	200, without resistive load
Type of distribution box	Three-phase to single-phase distribution connector
Protection type	IP20; When mated: IP2xC (These compact connectors are not designed for use in open, easily accessible areas!)

Plug-in connection

Mismating protection	Yes
Note on mismating protection	All <i>WINSTA</i> ® components are 100% protected against mismating when: a.) plugging different numbers of poles b.) plugging while rotated 180 c.) plugging while laterally staggered d.) plugging one pole
Locking lever	Yes
Locking of plug-in connection	Locking lever
Note on locking system	All connectors for mounted installations (snap-in versions for lighting fixtures or devices, all types of PCB and distribution connectors) are factory-equipped with locking levers to ensure plugs and sockets are securely locked. Additional locking levers are only required for flying leads (plug/socket).
Number of locking levers	6

Material data

Note (material data)	Information on material specifications can be found here
Color	white
Insulation material (main housing)	Polyamide (PA66)
Flammability class per UL94	V0
Contact material	Copper or copper alloy; surface-treated
Contact Plating	Tin
Fire load	1.696 MJ
Weight	87.5 g

Environmental requirements

Processing temperature	-5 ... +40 °C
Continuous operating temperature	-35 ... +85 °C
Note on continuous operating temperature	Insulating parts for temperatures ≤ 105 °C

Commercial data

PU (SPU)	10 pcs
Packaging type	Box
Country of origin	DE
GTIN	4045454530945
Customs tariff number	85366990990

Product Classification

UNSPSC	39121406
eCl@ss 10.0	27-44-06-03
eCl@ss 9.0	27-44-06-03
ETIM 9.0	EC002567
ETIM 10.0	EC002567
ECCN	NO US CLASSIFICATION

Environmental Product Compliance

RoHS Compliance Status Compliant, No Exemption

Downloads

Environmental Product Compliance

Compliance Search	
Environmental Product Compliance 770-690	↓

Documentation

Bid Text			
770-690	10.12.2014	doc 23.50 KB	↓
770-690	19.02.2019	xml 3.13 KB	↓
ausschreiben.de 770-690			

CAD/CAE-Data

CAD data	
2D/3D Models 770-690	↓

CAE data	
EPLAN Data Portal 770-690	↓
WSCAD Universe 770-690	↓
ZUKEN Portal 770-690	↓

1 Compatible Products

1.1 System counterpart

1.1.1 Cable assembly



Item No.: 771-9993/206-102
pre-assembled connecting cable; Eca; Plug/open-ended; 3-pole; Cod. A; H05VV-F 3G 1.5 mm²; 1 m; 1,50 mm²; white



Item No.: 771-9995/206-102
pre-assembled connecting cable; Eca; Plug/open-ended; 5-pole; Cod. A; H05VV-F 5G 1.5 mm²; 1 m; 1,50 mm²; white



Item No.: 771-9995/106-102
pre-assembled connecting cable; Eca; Socket/open-ended; 5-pole; Cod. A; H05VV-F 5G 1.5 mm²; 1 m; 1,50 mm²; white



Item No.: 771-9993/006-102
pre-assembled interconnecting cable; Eca; Socket/plug; 3-pole; Cod. A; H05VV-F 3G 1.5 mm²; 1 m; 1,50 mm²; white



Item No.: 771-9995/006-102
pre-assembled interconnecting cable; Eca; Socket/plug; 5-pole; Cod. A; H05VV-F 5G 1.5 mm²; 1 m; 1,50 mm²; white

1.1.2 Female connector/socket



Item No.: 770-225

Socket; 5-pole; Cod. A; 4,00 mm²; white

Item No.: 770-425

Socket; 5-pole; Cod. A; 4,00 mm²; white

Item No.: 770-125

Socket; with strain relief housing; 5-pole; Cod. A; 4,00 mm²; white

Item No.: 770-325

Socket; with strain relief housing; 5-pole; Cod. A; 4,00 mm²; white

1.1.3 Male connector/plug



Item No.: 770-233

Plug; 3-pole; Cod. A; white

Item No.: 770-235

Plug; 5-pole; Cod. A; 4,00 mm²; white

Item No.: 770-435

Plug; 5-pole; Cod. A; 4,00 mm²; white

Item No.: 770-133

Plug; with strain relief housing; 3-pole; Cod. A; 4,00 mm²; white



Item No.: 770-233/035-050

Plug; with strain relief housing; 3-pole; Cod. A; 4,00 mm²; white

Item No.: 770-135

Plug; with strain relief housing; 5-pole; Cod. A; 4,00 mm²; white

Item No.: 770-335

Plug; with strain relief housing; 5-pole; Cod. A; 4,00 mm²; white

1.2 Optional Accessories

1.2.1 Cover

1.2.1.1 Cover



Item No.: 770-201

Lockout cap; 12-pole, separable; for sockets; Plastic; black

Item No.: 770-221

Lockout cap; 12-pole, separable; for sockets; Plastic; white

Item No.: 770-360

Lockout cap; for plugs; 5-pole; separable; yellow

1.2.2 Installation

1.2.2.1 Mounting accessories



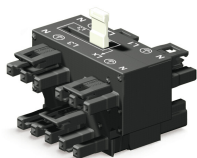
Item No.: 770-625

Mounting plate; 5-pole; for distribution connectors; Plastic; black

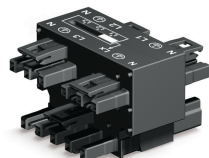
Item No.: 770-675

Mounting plate; 5-pole; for distribution connectors; Plastic; white

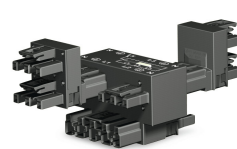
Installation Notes



Movable jumper

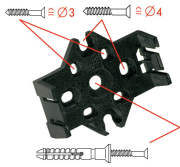


Jumper pushed down, flush with the housing (position L1)



Additional h-distribution connectors double L1 and L3.
This results in the following connection option:
L1/L1/L2/L2/L3/L3 with jumper in position L2
Notice: h-distribution connectors can only be plugged on L1 and L3.

Installation



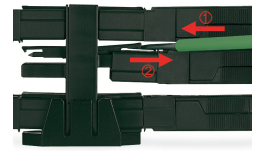
Mounting plates can be secured using commercially available screws or nail-drive anchors.



The distribution connectors snap together when attached to the mounting plate.



To release the distribution connector, unlock the latch using a screwdriver.



All distribution connector connections are locked and protected against accidental disconnection directly after mating. Locking of any connection is released using a screwdriver, even if all connections are used.