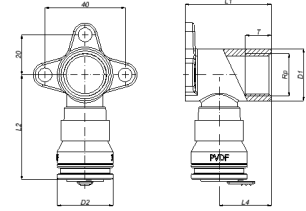


## 2S-1604K: Sanitair muurplaat binnendraad kort 16x1/2"



### Commerciële informatie

The Henco Vision fitting is entirely made from PVDF, a high-performance material. Some key advantages of these push fittings are:

- Fast and easy installation
- Pressing machines or wrenches are not required
- For both sanitary and central heating applications
- 100% embedding guaranteed

Advantages of PVDF

- Highly resistant to pressure and temperature
- Excellent mechanical strength
- Extreme flexibility: bending up to 10° is possible
- Perfectly suited for drinking water and foodstuffs
- Embedding is possible without extra protection
- Highly resistant to chemicals and corrosion

SCIP nummer 6b5ef4aa-b2e5-4f8c-8ef1-685f34c18f66

#### Certificaten

KIWA, KOMO, DVGW Wasser, GOST-R, QB (CSTBat), ATG, WRAS, ÖVGW Wasser, AFNOR, SINTEF, ETA, STF, RISE, ACS, PZH, TSU, EMI

#### Toepassingen

Drinkwater, Verwarming, Koeling, Sanitair

#### Oplossingen

Gebouwinstallaties, Industrie, Infra

## Technische kenmerken

Materiaal behuizing	Messing	Uitwendige buisdiameter aansluiting	16 Millimeter
Materiaal behuizing	Messing	Mediumtemperatuur (continu)	-10 70 Graden Celsius
Oppervlaktebescherming	Onbehandeld	Max. werkdruk bij 20°C	10 bar
Systeemgebonden	✓		
Aansluiting	Insteek (push-fitting)		
KIWA-keur	✓		

## Gerelateerde producten