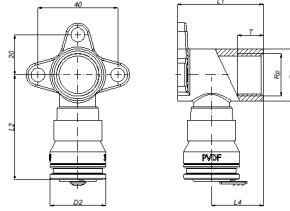


## 2S-1604K: Culasse pour sanitaire femelle court 16x1/2"



### Informations commerciales

The Henco Vision fitting is entirely made from PVDF, a high-performance material. Some key advantages of these push fittings are:

- Fast and easy installation
- Pressing machines or wrenches are not required
- For both sanitary and central heating applications
- 100% embedding guaranteed

Advantages of PVDF

- Highly resistant to pressure and temperature
- Excellent mechanical strength
- Extreme flexibility: bending up to 10° is possible
- Perfectly suited for drinking water and foodstuffs
- Embedding is possible without extra protection
- Highly resistant to chemicals and corrosion

### Certificats

KIWA, KOMO, DVGW Wasser, GOST-R, QB (CSTBat), ATG, WRAS, ÖVGW Wasser, AFNOR, SINTEF, ETA, STF, RISE, ACS, PZH, TSU, EMI

### Applications

Eau potable, Chauffage, refroidissement, Sanitaire

### Solutions

Installations de bâtiments, Industrie, Infra

## Caractéristiques techniques

Matériau du boîtier	Laiton	Diamètre extérieur du tube raccordement	16 millimètre
Matériau du boîtier	Laiton	Température moyenne (fonctionnement continu)	-10 70 degrés Celsius
Traitement de surface	Non traité	Pression de service maximale à 20 °C	10 bar
Lié au système	✓		
Raccordement	Insert		
Label de contrôle KIWA	✓		

## Produits liés