

**TARA Wall valve clockwise closing 3/4" - Brushed Dark Platinum**

TARA

36 608 892 Product version up to 10/27/2020

- rosette Ø 55 mm
- head part with cut-to-length spindle and sleeve
- WRAS



	Brushed Dark Platinum	36 608 892-99
	Chrome	36 608 892-00
	Brushed Platinum	36 608 892-06
	Platinum	36 608 892-08
	Dark Chrome	36 608 892-19
	Brushed Durabronze (23kt Gold)	36 608 892-28
	Matte Black	36 608 892-33
	Brushed Dark Brass (PVD)	36 608 892-39
	Brushed Bronze (PVD)	36 608 892-42
	Brushed Dark Bronze (PVD)	36 608 892-43
	Brushed Champagne (22kt Gold)	36 608 892-46
	Champagne (22kt Gold)	36 608 892-47
	Brushed Chrome	36 608 892-93

**Required miscellaneous**

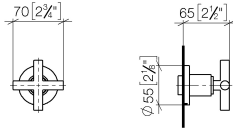
**Wall valve 3/4" -** 35 608 970 90



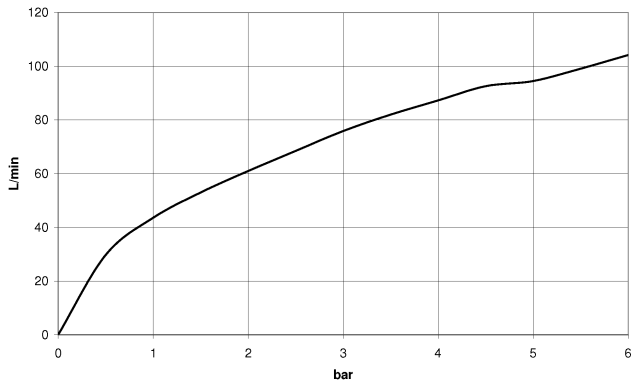
- min. recess depth 85 mm
- max. recess depth 145 mm

36 608 892 Product version up to 10/27/2020

mm [inches]



Flow rate chart



Codes & Standards

ASME A112.18.1

cUPC

Scottish Water  
Byelaws

UK Water Supply  
Regulations



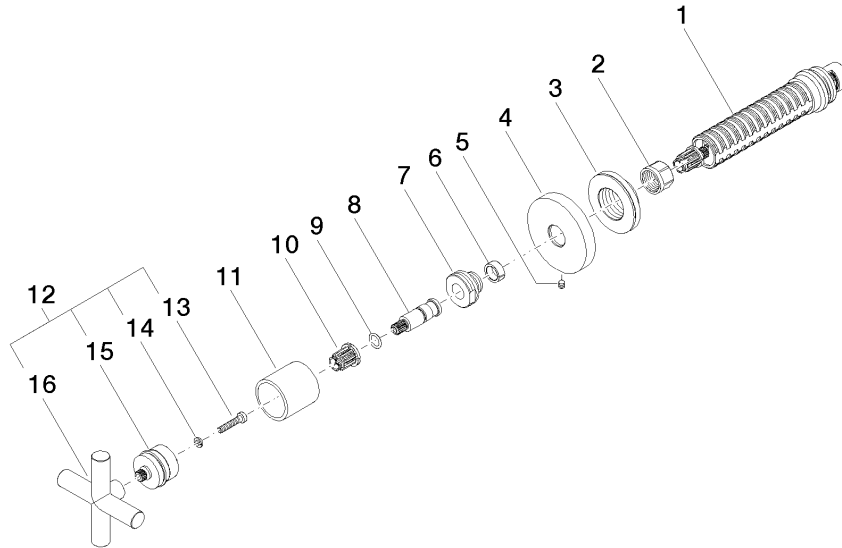
## TARA Wall valve clockwise closing 3/4" - Brushed Dark Platinum

TARA

36 608 892 Product version up to 10/27/2020

### Certificates and sustainability

WRAS_2010	IAPMO_4976 (	EPD-DOR-20230287 -IBA1-EN Environmental.prod uct-declarat
-----------	--------------	--



**Spare parts list**

No.	Item Number	Name	Quantity used	Delivery time
16	09 20 89 010-99	Handle 70 x 70 x 22,5 mm - Brushed Dark Platinum	1.00	-
Spare part can no longer be ordered, please order the replacement item				
	90208901010-99	Handle TARA - Brushed Dark Platinum		
14	90 30 11 029 00 90	Connection Spring lock washer Ø 4 -	1.00	14
3	09 21 02 108 90	Sleeve Ø 43,1 x 13 mm -	1.00	-
Spare part can no longer be ordered, please order the replacement item				
	9021021080090	Wall disc complete -		
9	90 14 10 060 00 90	O-Ring 8,0 x 1,5 mm -	1.00	14
12	90 20 89 010 10-99	Handle TARA - Brushed Dark Platinum	1.00	40
8	09 29 06 022 90	Connection Ø 11 x 38,5 mm -	1.00	14
6	90 14 15 020 03 90	Support ring -	1.00	14
7	09 24 05 002 90	Nipple Ø 24 x 16 mm -	1.00	14
13	90 30 30 075 00 90	Mounting Cylinder head screw with hexagon socket Low profile M4 x 20 mm -	1.00	14
2	90 23 30 023 00 90	Cap nut -	1.00	14
15	90 12 12 007 00-99	Handle Socket retainer Ø 29 x 26 mm - Brushed Dark Platinum	1.00	40
1	90 90 03 127 00 90	Head part clockwise closing 3/4" -	1.00	14
4	09 27 89 108-99	Rosette Ø 55 x Ø 15,1 x 9 mm - Brushed Dark Platinum	1.00	40
11	09 21 02 144-99	Cover Ø 30 x 30 mm - Brushed Dark Platinum	1.00	40
10	90 12 12 002 00 90	Fixing cap white Ø 15 x 12 mm -	1.00	14
5	90 31 11 007 00 90	Mounting Threaded pin with hexagon socket M4 x 6 mm	1.00	14
		-		