


90 11 01 023 00 Product version from 4/1/2025



	Pastel Green	90 11 01 023 00-54
	Chrome	90 11 01 023 00-00
	Gold (23.9kt)	90 11 01 023 00-01
	Brushed Platinum	90 11 01 023 00-06
	Platinum	90 11 01 023 00-08
	Durabrace (23kt Gold)	90 11 01 023 00-09
	Matte White	90 11 01 023 00-10
	Dark Chrome	90 11 01 023 00-19
	Light Gold (PVD)	90 11 01 023 00-26
	Brushed Light Gold (PVD)	90 11 01 023 00-27
	Brushed Durabrace (23kt Gold)	90 11 01 023 00-28
	Red	90 11 01 023 00-29
	Orange	90 11 01 023 00-30
	Dark Green	90 11 01 023 00-31
	Matte Black	90 11 01 023 00-33
	Brushed Gold (PVD)	90 11 01 023 00-37
	Brushed Dark Brass (PVD)	90 11 01 023 00-39
	satin chrome	90 11 01 023 00-32
	Brushed Bronze (PVD)	90 11 01 023 00-42
	Brushed Champagne (22kt Gold)	90 11 01 023 00-46
	Champagne (22kt Gold)	90 11 01 003 00-47
	Light Pink	90 11 01 023 00-55
	Yellow	90 11 01 023 00-59
	Grey Blue	90 11 01 023 00-61
	Light Grey	90 11 01 023 00-63
	Dark Grey	90 11 01 023 00-66
	Brushed Chrome	90 11 01 023 00-93



## Basin Waste 1" for basin / bidet - Pastel Green

SPARE PARTS

90 11 01 023 00 Product version from 4/1/2025



Brushed Dark  
Platinum

90 11 01 023 00-99



## Basin Waste 1" for basin / bidet - Pastel Green

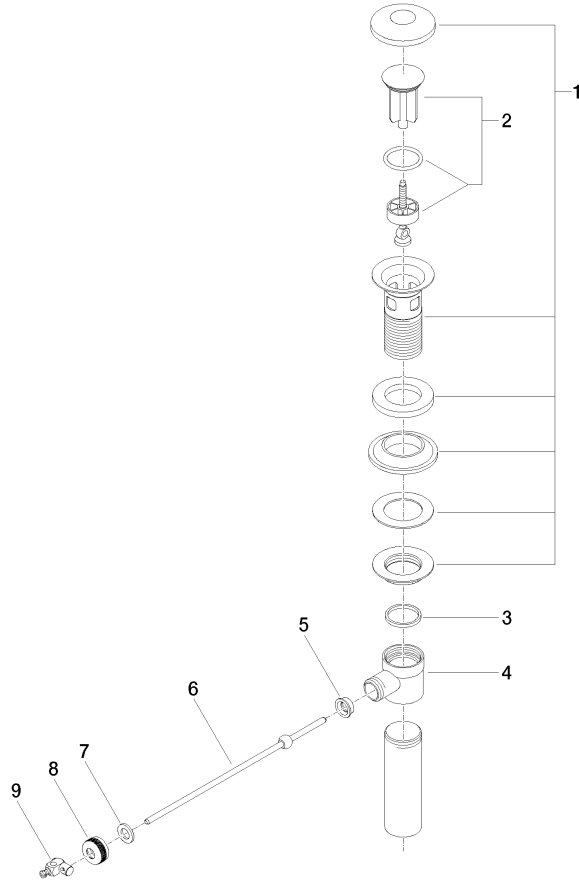
SPARE PARTS

---

90 11 01 023 00 Product version from 4/1/2025

90 11 01 023 00 Product version from 4/1/2025

Parts for other finishes can be found here: [Chrome](#)



**Spare parts list**

No.	Item Number	Name	Quantity used	Delivery time
2	90 31 20 009 00-54	plug	1.00	-
Spare part can no longer be ordered, please order the replacement item				
5	09 14 05 040 90	Washer for pop-up waste Ø 18 x 6,5 mm -	1.00	14
4	09 21 01 024 90	Basin Waste Strainer waste 1" -	1.00	14
3	09 14 20 011 90	Washer Vf 3110 31 x 27 x 3 mm -	1.00	14
7	09 30 11 049 90	Centering disc 10,2 x 18 x 2 mm -	1.00	14
8	09 23 30 004-54	nut	1.00	82
6	09 31 09 042-54	pull-rod	1.00	-
Spare part can no longer be ordered, please order the replacement item				
1	90 11 01 036 00-54	cup	1.00	-
Spare part can no longer be ordered, please order the replacement item				
9	09 34 01 004-54	joint	1.00	82