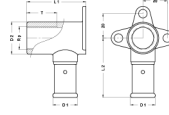
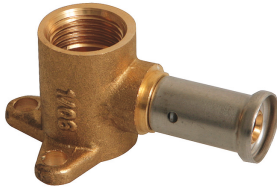


2P-1604K: Backplate elbow female short model 16x1/2"



Commercial information

The body of the fitting is made from CW617N brass. These fittings offer great advantages with regard to corrosion and they are also better for the environment.

- The fitting has a buffer ring that prevents direct galvanic contact between the aluminium of the pipe and the brass of the fitting.
- This excludes the possibility of electrolysis occurring.
- The fitting is equipped with O-rings made from EPDM and RVS pressure sleeves with 3 inspection windows.
- In order to prevent assembly errors, the dimensions and type of press profile which can be pressed are shown on the RVS sleeves

Certificates

ATG, DVGW Wasser, ETA, KIWA, ÖVGW Wasser, WRAS, KOMO, STF, ÖN EN 21003-2/-3, GOST-R, ITC, TSU, QB (CSTBat), AFNOR, ACS, PZH, DNV-GL, Sans 21003, Kontrol Biro, EMI

Applications

Potable water, Heating, Compressed air, Cooling, Sanitary





Solutions

Building installations, Industry, Utility, Shipbuilding

Technical characteristics

| | | | |
|------------------------------------|---------------|----------------------------------|------------------------|
| Housing material | Brass | Length of connection 1 | 30.5 Millimetre |
| Housing material | Brass | Working length connection 1 | 25 Millimetre |
| Surface protection | Untreated | Length of connection 2 | 32 Millimetre |
| Shape | Right-angled | Working length connection 2 | 32 Millimetre |
| Thread size | 1/2 inch | Length from wall plate | 32 Millimetre |
| System specific | ✓ | Length of connection 3 | 0 Millimetre |
| Nominal diameter connection 2 | 1/2 inch (15) | Working length connection 3 | 0 Millimetre |
| Connection | Press sleeve | Medium temperature (continuous) | -10 70 Degrees celsius |
| Thread size tap connection | 1/2 inch | Max. operating pressure at 20 °C | 16 Bar |
| Contour code | TH | | |
| DVGW quality mark for gas | ✗ | | |
| DVGW quality mark for water | ✓ | | |
| KIWA certified | ✓ | | |
| Gastec QA mark | ✗ | | |
| KOMO certified | ✓ | | |
| Type approval according to BBR/EKS | ✗ | | |

Related products

| Product code | GTIN | Description | Image |
|----------------|----------------|---|---|
| BE16 | 05414764028920 | Henco Jaws (universal) BE/TH-Profile 16x2 |  |
| PRESSCHECK1432 | 05414764028920 | Henco Tool to control the accuracy of a pressing Ø14-32 |  |
| PLP-P-PK | 05414764028920 | Henco Galvanised bracket for backplate elbow |  |
| PLF-P-PK | 05414764028920 | Henco Galvanised bracket flat for backplate elbow |  |