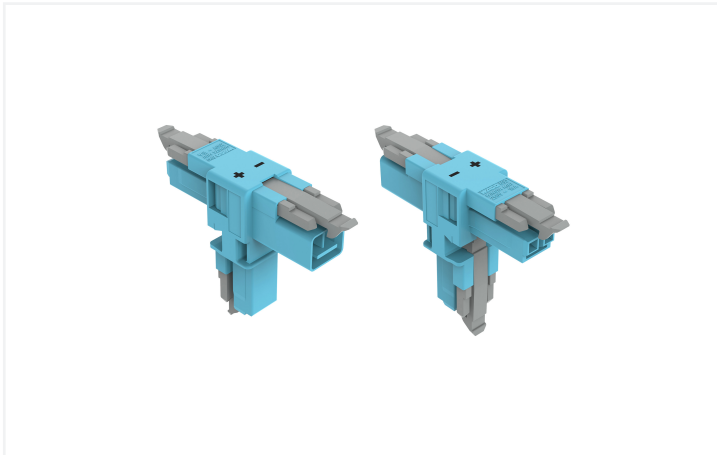


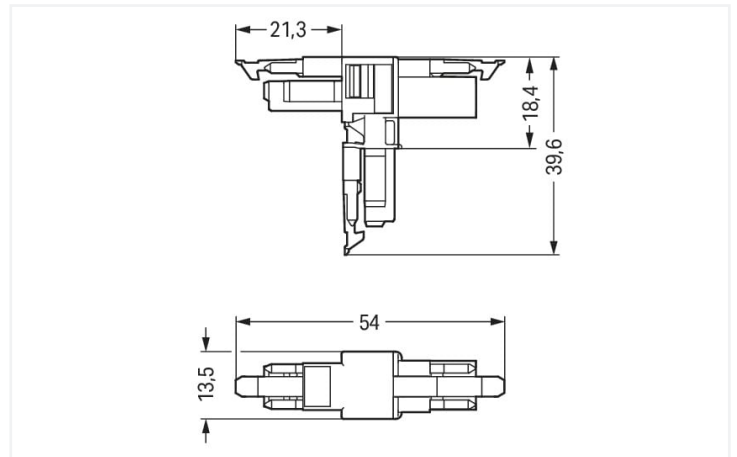
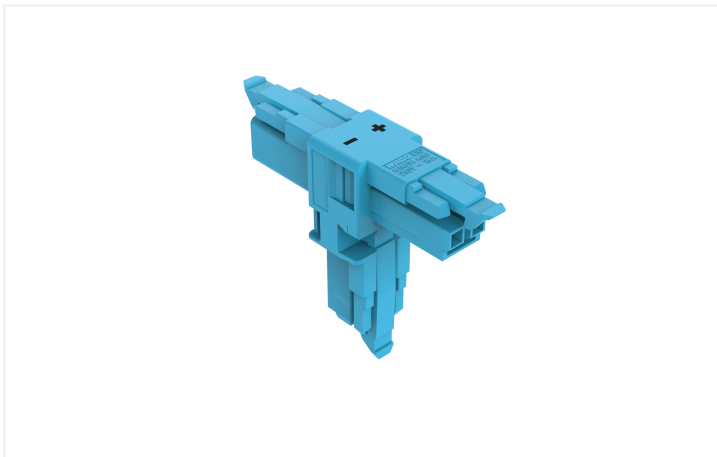
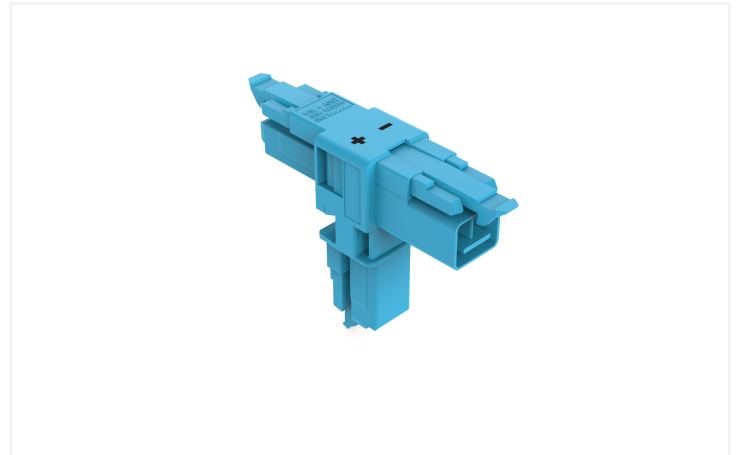
## Data Sheet | Item Number: 890-1620

T-distribution connector; 2-pole; Cod. I; 1 input; 2 outputs; 3 locking levers; for flying leads; blue

<https://www.wago.com/890-1620>



Color: ■ blue



Dimensions in mm

Distribution connector *WINSTA®* MINI rated current 16 A

Use effective pluggable connections instead of laborious screw connections: With the *WINSTA®* MINI distribution connector with protection against mismatching. On PCBs, in control cabinets or for connecting lights – pluggable installation connectors from WAGO allow you to make connections according to an enormous variety of requirements in next to no time. For greater security in electrical installations, the pluggable installation connector is provided with mechanical protection against mismatching. I coding in blue is used to identify *WINSTA®* MINI pluggable installation connectors, which are used above all in automation of buildings for activating lighting. Particularly if only limited space is available, our smallest pluggable connection system, *WINSTA®* MINI, conveniently displays its advantageous properties. It saves space, and, with Push-in CAGE CLAMP® spring pressure connection technology, it additionally can be installed quickly, since the connection is low-maintenance and can be performed without screw connections.

Push-in CAGE CLAMP® spring pressure connection technology – pluggable installation instead of laborious screw connections!

The *WINSTA®* Pluggable Connection System allows pluggable electrical installation. This significantly reduces the need for servicing and lowers costs. Enjoy the benefits of the pluggable version of our maintenance-free spring pressure connection technology tool! Plan your installation with with marking from WAGO.

- effective protection against mismatching
- easy tool-free operation, a wide range of coding options
- for lighting management
- ready for immediate use
- convenient installation and commissioning

## Electrical data

Ratings per IEC/EN 60664-1				Approvals per UL 1977	
Overvoltage category	III	III	II	Rated voltage	600 V
Pollution degree	3	2	2	Rated current	14 A
Nominal voltage	250 V	-	-		
Rated surge voltage	4 kV	-	-		
Rated current	16 A	-	-		

## General information

Note on contact resistance	approx. 1 mΩ of contact resistance approx. 0.25 mΩ contact transition plug/ socket
----------------------------	--

## Connection data

Total number of potentials	2	Connection 1	
		Pole number	2

## Physical data

Pin spacing	4.4 mm / 0.173 inches
Width	13.5 mm / 0.531 inches
Height	39.6 mm / 1.559 inches
Depth	54 mm / 2.122 inches

## Mechanical data

Use	DALI, Lighting Management
Coding	I
Variable coding	No
Marking	+ -
Potential marking	+ -
Mating force of a plug-in connection	Approx. 20 ... 70 N (depending on pole number)
Retention force of a plug-in connection	When locked: > 80 N
Unmating force of a plug-in connection	Unlocked: approx. 20 ... 70 N (depending on pole number)
Number of mating cycles	200, without resistive load
Type of distribution box	T-distribution connector
Protection type	IP20; IP40 when mated
Suitable	for flying leads

## Plug-in connection

Mismating protection	Yes
Note on mismating protection	All <i>WINSTA</i> ® components are 100% protected against mismating when: a.) plugging different numbers of poles b.) plugging while rotated 180 c.) plugging while laterally staggered d.) plugging one pole
Locking lever	Yes
Locking of plug-in connection	Locking lever
Note on locking system	All connectors for mounted installations (snap-in versions for lighting fixtures or devices, all types of PCB and distribution connectors) are factory-equipped with locking levers to ensure plugs and sockets are securely locked. Additional locking levers are only required for flying leads (plug/socket).
Number of locking levers	3





Material data		
Note (material data)		<a href="#">Information on material specifications can be found here</a>
Color	blue	
Material group	I	
Insulation material (main housing)	Polyamide (PA66)	
Flammability class per UL94	V0	
Contact material	Copper or copper alloy; surface-treated	
Contact Plating	Tin	
Fire load	0.214 MJ	
Weight	6.3 g	

Environmental requirements		
Processing temperature	-5 ... +40 °C	
Continuous operating temperature	-35 ... +85 °C	
Note on continuous operating temperature	Insulating parts for temperatures ≤ 105 °C	

Commercial data		
Product Group	20 (Winsta)	
eCl@ss 10.0	27-44-06-03	
eCl@ss 9.0	27-44-06-03	
ETIM 9.0	EC002567	
ETIM 8.0	EC002567	
PU (SPU)	25 pcs	
Packaging type	Box	
Country of origin	DE	
GTIN	4045454547646	
Customs tariff number	85366990990	

Environmental Product Compliance		
RoHS Compliance Status	Compliant, No Exemption	

### Approvals / Certificates

General approvals			Declarations of conformity and manufacturer's declarations		
 			Approval	Standard	Certificate Name
Approval	Standard	Certificate Name	EU-Declaration of Confor- mity WAGO GmbH & Co. KG	-	-
CCA DEKRA Certification B.V.	EN 61535	71-123231	UK-Declaration of Confor- mity WAGO GmbH & Co. KG	-	-
CCA DEKRA Certification B.V.	IEC 61535	NL-85020			
cURus Underwriters Laboratories Inc.	UL 1977	E45171			



Approvals for marine applications



Approval	Standard	Certificate Name
ABS American Bureau of Ship- ping	Steel Vessel Rules	19-HG1869855-PDA
DNV GL Det Norske Veritas, Ger- manischer Lloyd	-	TAE00001Z6
LR Lloyds Register	EN 61535	08/20047 (E2)

Downloads

Environmental Product Compliance

Compliance Search
Environmental Product Compliance 890-1620



Documentation

Bid Text			
890-1620	19.02.2019	xml 2.84 KB	
890-1620	03.12.2014	doc 22.50 KB	

CAD/CAE-Data

CAD data
2D/3D Models 890-1620

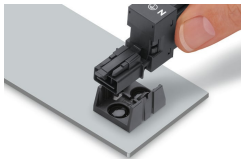


CAE data
EPLAN Data Portal 890-1620
WSCAD Universe 890-1620
ZUKEN Portal 890-1620



Installation Notes

Installation



Secure the mounting plate via pins.

