

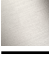



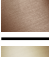



36 210 892



- Drehumstellung
  - Rosette 60 mm
- Passt zu TARA**

Passt zu TARA

	Dark Platinum gebürstet	36 210 892-99
	Chrom	36 210 892-00
	Platin gebürstet	36 210 892-06
	Platin	36 210 892-08
	Dark Chrome	36 210 892-19
	Light Gold gebürstet	36 210 892-27
	Messing gebürstet (23kt Gold)	36 210 892-28
	Schwarz matt	36 210 892-33
	Bronze gebürstet	36 210 892-42
	Champagne gebürstet (22kt Gold)	36 210 892-46
	Champagne (22kt Gold)	36 210 892-47
	Chrom gebürstet	36 210 892-93

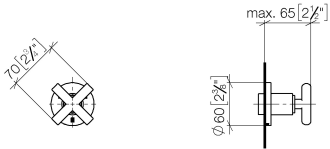
**Benötigtes Zubehör**



- UP-Dreiwege-Umstellung -** 35 203 970 90
- Max. Einbautiefe 160 mm
  - Min. Einbautiefe 85 mm

36 210 892

mm [inches]



Durchflussdiagramm



Codes & Standards

DIN 4109

ISO 3822

Scottish Water  
Byelaws

UK Water Supply  
Regulations

Ü-Zeichen



TARA UP-Dreiwege-Umstellung - Dark Platinum gebürstet

TARA

36 210 892

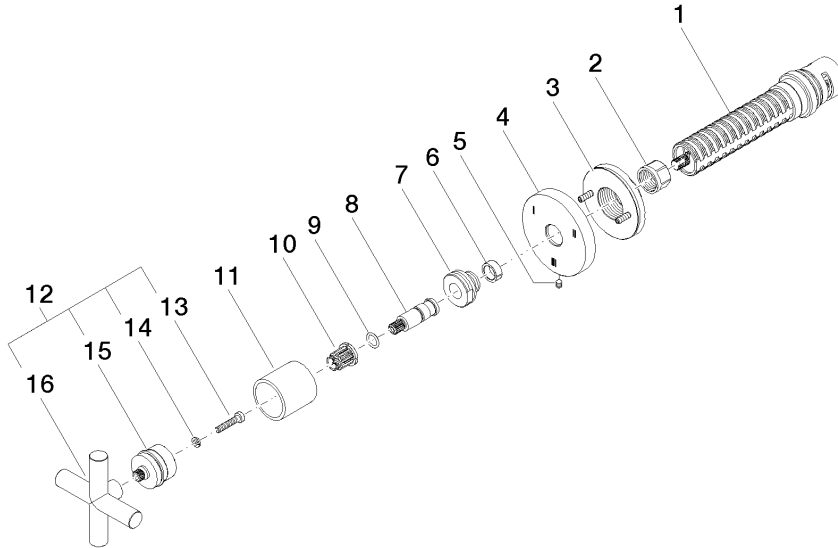
Zertifikate

WRAS\_2307

LGA\_38

36 210 892

Produktversion ab 4/1/2022





36 210 892

### Ersatzteilstückliste

#### Produktversion ab 4/1/2022

Nr.	Artikelnummer	Benennung	Verbaumenge	Lieferzeit
	90 90 03 303 10 90	Umstellung -	16	2