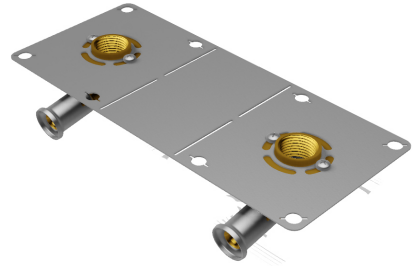


28PF-20042004: Double Backplate elbow female for plaster 20x1/2"



Commercial information

Hencofix: plaster wall mixing valve mounting bracket in Ø16 and Ø20

- Plate in stainless perforated steel (to switch the double-platinum, into single plates). A single reference for two configurations, optimizing your stocks.
- Connection with new incline for better implementation when fixing partition.
- Brass press fitting in one piece, for a perfect connection.
- Fitting in diameter 20x1/2" for showerhead with high flow. Exists also in diameter 16x1/2"

Certificates

QB (CSTBat), KIWA, KOMO, DVGW Wasser, ATG, ÖN EN 21003-2/-3, ÖVGW Wasser, ETA, STF, AFNOR, ACS, WRAS, GOST-R, PZH, ITC, TSU, DNV-GL, EMI

Applications

Potable water, Heating, Cooling, Compressed air, Sanitary

Solutions

Building installations, Industry, Utility, Shipbuilding

Technical characteristics

Housing material	Brass	Outer pipe diameter connection	20 Millimetre
Housing material	Brass	Medium temperature (continuous)	-10 70 Degrees celsius
Surface protection	Untreated	Max. operating pressure at 20 °C	10 Bar
Shape	Right-angled		
Thread size	1/2 inch		
System specific	✓		
Nominal diameter connection 2	1/2 inch (15)		
Connection	Press sleeve		
Thread size tap connection	1/2 inch		
Contour code	TH		
KIWA certified	✓		

Related products

Product code	GTIN	Description
BE20MINI3	05414764323070	Henco Jaw for press machine M-BMINI3 BE/TH-Profile 20mm

Image

