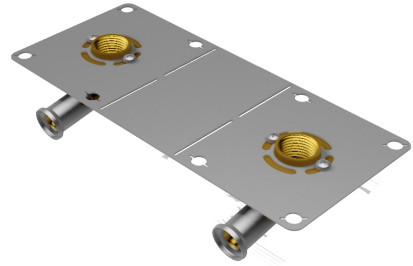


## 28PF-16041604: Double Backplate elbow female for plaster 16x1/2"



### Commercial information

Hencofix: plaster wall mixing valve mounting bracket in Ø16 and Ø20

- Plate in stainless perforated steel (to switch the double-platinum, into single plates). A single reference for two configurations, optimizing your stocks.
- Connection with new incline for better implementation when fixing partition.
- Brass press fitting in one piece, for a perfect connection.
- Fitting in diameter 20x1/2" for showerhead with high flow. Exists also in diameter 16x1/2"

### Certificates

QB (CSTBat), KIWA, KOMO, DVGW Wasser, ATG, ÖN EN 21003-2/-3, ÖVGW Wasser, ETA, STF, AFNOR, ACS, WRAS, GOST-R, PZH, ITC, TSU, DNV-GL, Sans 21003, Kontrol Biro, EMI

### Applications

Potable water, Heating, Cooling, Compressed air, Sanitary

### Solutions

Building installations, Industry, Utility, Shipbuilding

## Technical characteristics

Housing material	Brass	Outer pipe diameter connection	16 Millimetre
Housing material	Brass	Medium temperature (continuous)	-10 70 Degrees celsius
Surface protection	Untreated	Max. operating pressure at 20 °C	10 Bar
Shape	Right-angled		
Thread size	1/2 inch		
System specific	✓		
Nominal diameter connection 2	1/2 inch (15)		
Connection	Press sleeve		
Thread size tap connection	1/2 inch		
Contour code	TH		
KIWA certified	✓		

## Related products

Product code	GTIN	Description
BE16MINI3	05414764247178	Henco Jaw for press machine M-BMINI3 BE/TH-Profile 16mm

Image

