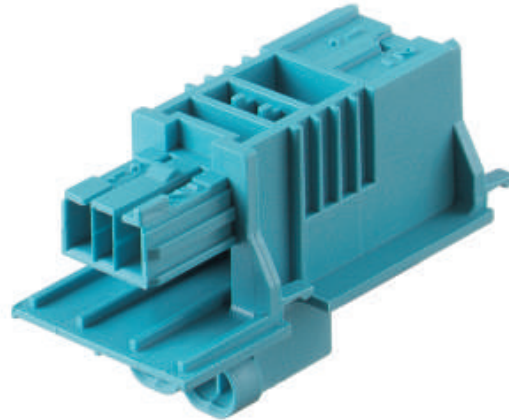


Product data sheet

Item No. 93.420.4553.0

Distributor BST14I2V 2P1KR PB02

Luminaire connection TT, BST14i2 pole, 1 input, 1 output, 50V/3A with integrated connector for internal wiring of lamps, color of coding: pastel blue



Item No.	93.420.4553.0
EAN	4015573676909
Order Unit	100 Piece(s)

Certificates / Approvals



Technical data

**General**

Rated current	3 A
Rated voltage	50 V
Rated impulse voltage	0.8 kV
Pollution degree	2
Mechanical coding	Yes
Interlockable	Yes
Color of coding/ contact carrier	Pastel blue

**Model**

Number of poles	2
Number of inputs	1
Number of outputs	2
Type of fastening	Yes
Degree of protection (IP)	IP20
Type of distributor	Integrated lamp connector

**Material**

Housing material	Polyamide
------------------	-----------

Halogen free	Yes
Contact material	Other
Insulation components continuous temperature	100 °C
Surface finish	Gilt

**Dimensions**

Length	42 mm
Width	19.5 mm
Height	24 mm

**Technical drawing**

**Verschlussstück**  
cover cap  
05.563.7753.0

**Verschlussstück beigelegt**  
cover cap enclosed  
05.563.7853.0

**Blechausschnitt siehe Zchn.-Nr. A 1882.001**  
plate cut out see drawing number A 1882.001

**Weitere Daten siehe Katalog**  
further data see catalog

**Typ: BST1412V\_2P1KR\_\_\_\_\_PB02**

Frei gefertigt nach DIN		DIN - Zeichnung, keine nationalen Änderungen		1. Verwendung		Bl. 1 von 1	
Maßstab	2:1	2000	Tag	Name	Zeichnung Nr. 93.420.4553.0 01K Index		
Erstellt	07.06.	Kurz Nr.					
Geprüft		Ersatz für -					
Verwend. Blatt / Blatt		Bekennung		<b>VERTEILER</b>			
Änderung		Steckverb., m. Verriegelung / 1 Eingang ; 1 Ausgang connector with locking device / 1 input ; 1 output					

42504953001C\_010625/102\_2004-08-07T14:28:53\_1030