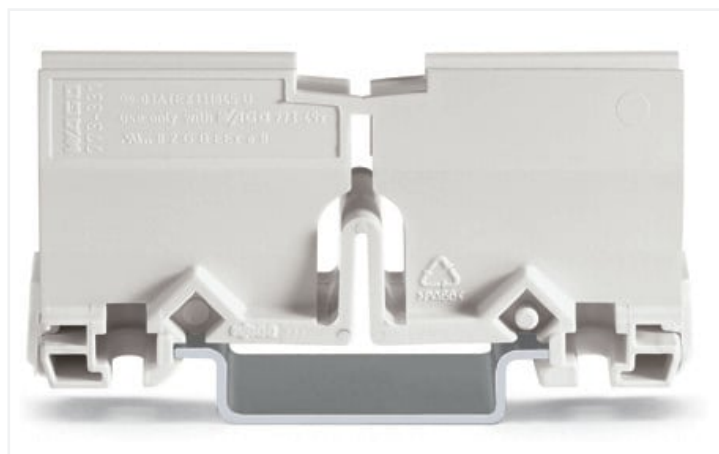
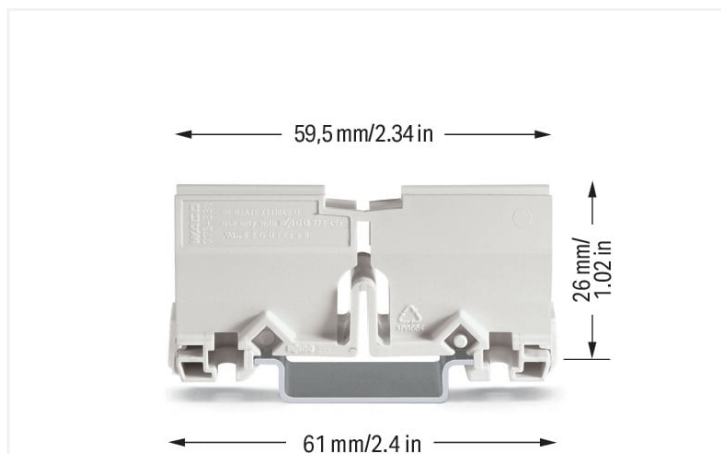


Data Sheet | Item Number: 773-331

Mounting carrier; for Ex applications; 773 Series - 2.5 mm² / 6 mm²; for DIN-35 rail mounting/screw mounting; light gray

<https://www.wago.com/773-331>



Color: ■ light gray

Physical data

Width	18 mm / 0.709 inches
Height	61 mm / 2.402 inches
Depth from upper-edge of DIN-rail	26 mm / 1.024 inches

Mechanical data

Mounting type	DIN-35 rail Screw mount
Suitable	for all Ex PUSH WIRE® junction box connectors (773 Series)

Material data

Note (material data)	Information on material specifications can be found here
Color	light gray
Material group	I
Insulation material	Polyamide (PA66)
Flammability class per UL94	V0
Fire load	0.262 MJ
Weight	8.7 g

Environmental requirements

Continuous operating temperature	105 °C
----------------------------------	--------

Commercial data	
Product Group	7 (Push Wire Conn.)
eCl@ss 10.0	27-14-11-92
eCl@ss 9.0	27-14-11-92
ETIM 8.0	EC002848
ETIM 7.0	EC002848
PU (SPU)	50 (10) pcs
Packaging type	Box
Country of origin	DE
GTIN	4044918526517
Customs tariff number	39269097900

Environmental Product Compliance	
RoHS Compliance Status	Compliant, No Exemption

Approvals / Certificates

Approvals for hazardous areas



Approval	Standard	Certificate Name
ATEX UL International Demko A/ S	EN 60079	DEMKO 03 ATEX 131845U Rev. 1 (II 2 G Ex eII C Gb)

Downloads





Environmental Product Compliance

Compliance Search	
Environmental Product Compliance 773-331	↓

Documentation

Bid Text			
773-331	17.05.2017	doc 23.50 KB	↓
773-331	19.02.2019	xml 2.55 KB	↓
ausschreiben.de 773-331			↓

CAD/CAE-Data

CAD data	CAE data
2D/3D Models 773-331 	EPLAN Data Portal 773-331 
	WSCAD Universe 773-331 
	ZUKEN Portal 773-331 

1 Compatible Products

1.1 Optional Accessories

1.1.1 Marking

1.1.1.1 Marking strip



Item No.: 210-834

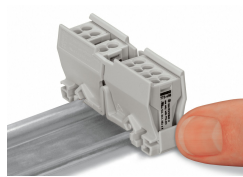
Marking strips; on reel; 5 mm wide; plain;
Self-adhesive; white

Installation Notes

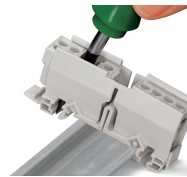
Installation



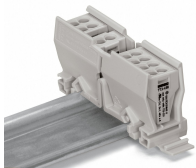
Snap the mounting carrier onto the DIN-rail.



Use the cover as an end plate.

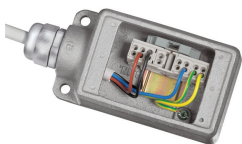


Remove the mounting carrier from the DIN-rail.



Insert the connectors into the carrier.

Application



Wiring example in an Ex junction box



Wiring example in an Ex junction box

Subject to changes. Please also observe the further product documentation!

Current addresses can be found at: www.wago.com