

**Basin Waste with push fastening 1 1/4" - Durabronz (23kt Gold)**

SERIES-VARIOUS

10 125 970 Product version from 10/1/2023



	Durabronz (23kt Gold)	10 125 970-09
	Chrome	10 125 970-00
	Brushed Platinum	10 125 970-06
	Platinum	10 125 970-08
	Dark Chrome	10 125 970-19
	Light Gold (PVD)	10 125 970-26
	Brushed Light Gold (PVD)	10 125 970-27
	Brushed Durabronz (23kt Gold)	10 125 970-28
	Matte Black	10 125 970-33
	Brushed Gold (PVD)	10 125 970-37
	Brushed Dark Brass (PVD)	10 125 970-39
	Brushed Bronze (PVD)	10 125 970-42
	Brushed Dark Bronze (PVD)	10 125 970-43
	Brushed Champagne (22kt Gold)	10 125 970-46
	Champagne (22kt Gold)	10 125 970-47
	Brushed Chrome	10 125 970-93
	Brushed Dark Platinum	10 125 970-99



## Basin Waste with push fastening 1 1/4" - Durabronze (23kt Gold)

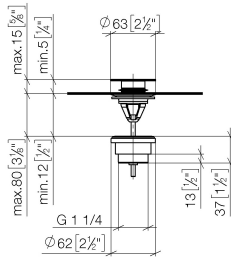
SERIES-VARIOUS

10 125 970 Product version from 10/1/2023

Only suitable for basins with an overflow.

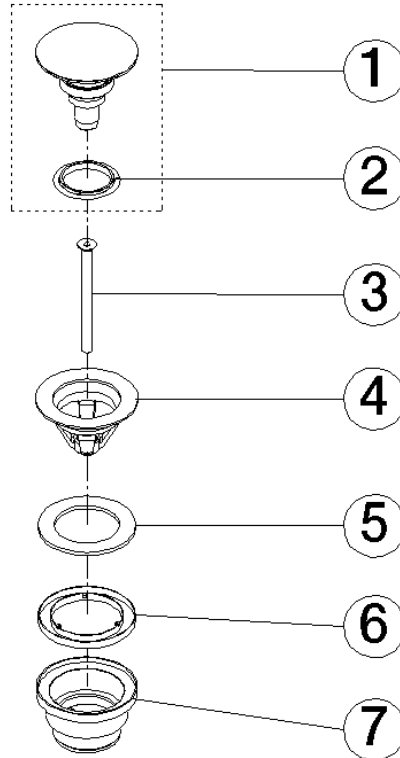
10 125 970 Product version from 10/1/2023

mm [inches]



10 125 970 Product version from 10/1/2023

Parts for other finishes can be found here: [Chrome](#)



**Spare parts list**

No.	Item Number	Name	Quantity used	Delivery time
1	04 31 20 096 00-09	Plug Ø 63 x 55 mm - Durabron (23kt Gold)	1.00	54
4	09 11 01 038-09	Cup for pop-up waste Press closing Ø 63 - Durabron (23kt Gold)	1.00	54
7	09 11 10 156-09	Connection - Durabron (23kt Gold)	1.00	-
Spare part can no longer be ordered, please order the replacement item				
2	90 14 03 152 00 90	Washer for press closing Ø 41 x 4,5 mm -	1.00	14
6	09 14 03 153 90	Washer for press closing Ø 59,5 x 6,3 mm -	1.00	14
5	09 14 05 061 90	Washer for press closing 63 mm -	1.00	14
3	09 30 30 179 90	Mounting Countersunk screw with hexagon socket M6 x80 mm -	1.00	14