

Angle valve - Brushed Durabronze (23kt Gold)

SERIES SPECIFIC

22 901 782 Product version from 3/10/2014 to 5/27/2021

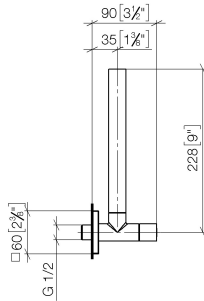


- rosette 60 x 60 mm
- hose covering 200mm, for shortening
- 1/2" connection
- WRAS

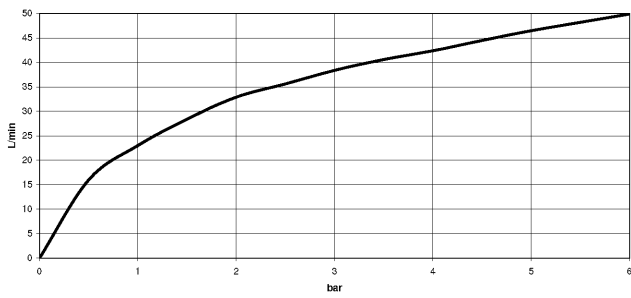
	Brushed Durabronze (23kt Gold)	22 901 782-28
	Chrome	22 901 782-00
	Brushed Platinum	22 901 782-06
	Platinum	22 901 782-08
	Dark Chrome	22 901 782-19
	Matte Black	22 901 782-33
	Brushed Gold (PVD)	22 901 782-37
	Brushed Dark Brass (PVD)	22 901 782-39
	Brushed Bronze (PVD)	22 901 782-42
	Brushed Dark Bronze (PVD)	22 901 782-43
	Brushed Champagne (22kt Gold)	22 901 782-46
	Champagne (22kt Gold)	22 901 782-47
	Brushed Chrome	22 901 782-93
	Brushed Dark Platinum	22 901 782-99

22 901 782 Product version from 3/10/2014 to 5/27/2021

mm [inches]



Flow rate chart



Codes & Standards

Scottish Water
Byelaws

UK Water Supply
Regulations



Angle valve - Brushed Durabron (23kt Gold)

SERIES SPECIFIC

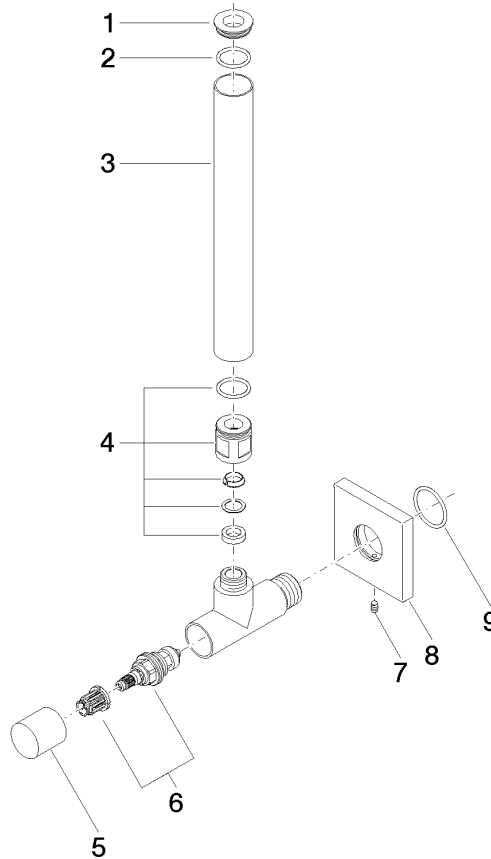
22 901 782 Product version from 3/10/2014 to 5/27/2021

Certificates and sustainability

WRAS_2205

22 901 782 Product version from 3/10/2014 to 5/27/2021

Parts for other finishes can be found here: Chrome



Spare parts list

No.	Item Number	Name	Quantity used	Delivery time
1	09 21 22 000-28	Cover Ø 24 x 6 mm - Brushed Durabron (23kt Gold)	1.00	-
Spare part can no longer be ordered, please order the replacement item				
6	90 90 03 006 00 90	Head part Grease chamber 3/8" -	1.00	14
9	09 14 10 112 90	O-Ring 24,0 x 2,0 mm -	1.00	14
8	09 27 78 042-28	Rosette for angle valve 60 x 60 x 9 mm - Brushed Durabron (23kt Gold)	1.00	40
2	90 14 10 010 00 90	O-Ring EPDM 70 17,0 x 2,0 mm -	1.00	14
3	09 28 22 020-28	Pipe Ø 24 x 200 mm - Brushed Durabron (23kt Gold)	1.00	40
5	09 20 22 001-28	Handle Ø 24 x 25,5 mm - Brushed Durabron (23kt Gold)	1.00	40
4	04 24 04 220 01-28	Compression fitting Ø 22 x 22 mm - Brushed Durabron (23kt Gold)	1.00	-
Spare part can no longer be ordered, please order the replacement item				
7	09 31 11 048 90	Mounting Threaded pin with hexagon socket with point M4 x 8 mm -	1.00	14