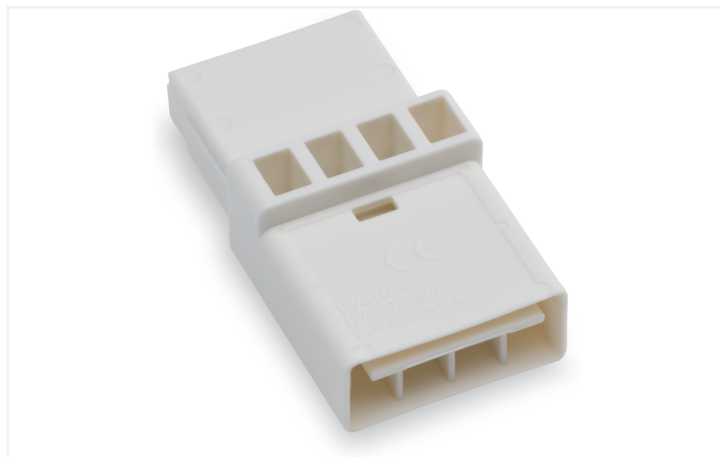
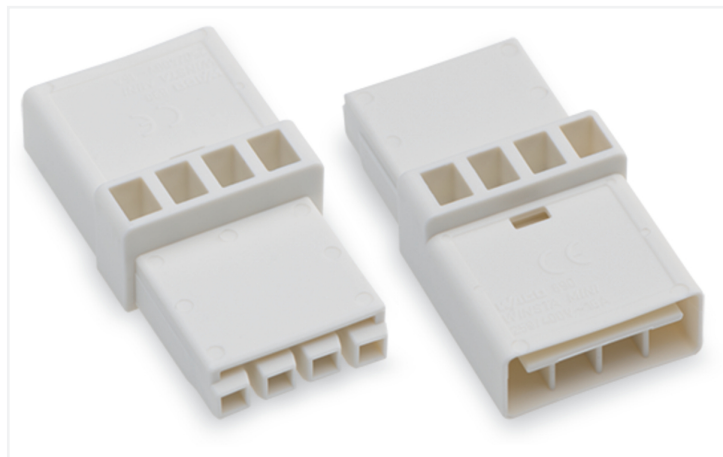


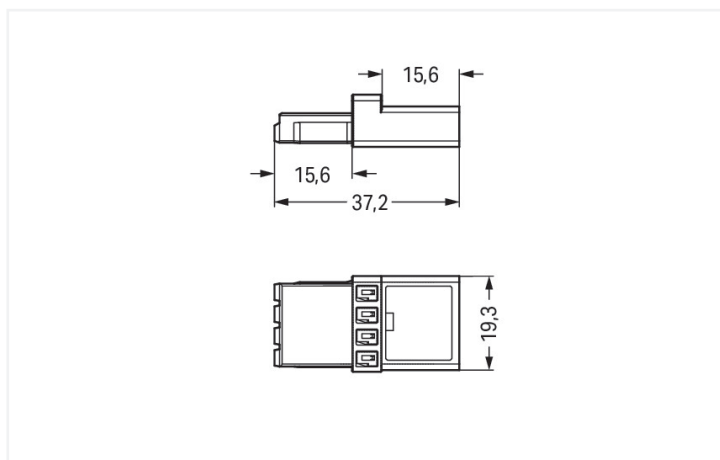
## Data Sheet | Item Number: 890-654

Intermediate coupler; 4-pole; Cod. A; for sockets and plugs; white

<https://www.wago.com/890-654>



Color: ■ white



Dimensions in mm

### Distribution connector *WINSTA*® MINI 4-pole

The *WINSTA*® MINI distribution connector with locking latch supports fast, reliable installation. WAGO pluggable installation connectors are used when specifications repeat or are planned on a specified pattern, for example for installing grid lighting or flush-mount lighting. For greater security in electrical installations, the pluggable installation connector is provided with mechanical protection against mismatching. Thanks to the color coding and mechanical A coding of *WINSTA*® MINI pluggable installation connectors, you can clearly distinguish different circuits. Thanks to its particularly minimal dimensions, our *WINSTA*® MINI Pluggable Connection System with Push-in *CAGE CLAMP*® spring pressure connection technology is especially suitable in very restricted spaces, i.e., for installations when very little room is available.

Push-in *CAGE CLAMP*® spring pressure connection technology – pluggable installation instead of laborious screw connections!

The *WINSTA*® Pluggable Connection System allows pluggable electrical installation. This significantly reduces the need for servicing and lowers costs. Choose durability and quality – with locking lever from WAGO makes the electrical installation of electrical components noticeably easier.

- effective protection against mismatching
- consistent IP40 protection
- with A coding for a large number of applications
- custom-engineered solutions
- rapid, structured electrical installation

| Notes |   |
|-------|---|
| Note  | At least one snap-in connector <b>WITHOUT</b> a locking lever is required on one side when connecting two lights directly via intermediate coupler. |

| Electrical data      |       |                |    |               |  |         |  |
|----------------------|-------|----------------|----|---------------|--|---------|--|
| Ratings per          |       | IEC/EN 60664-1 |    | Approvals per |  | UL 1977 |  |
| Overvoltage category | III   | III            | II | Rated voltage |  | 600 V   |  |
| Pollution degree     | 3     | 2              | 2  | Rated current |  | 12 A    |  |
| Nominal voltage      | 400 V | -              | -  |               |  |         |  |
| Rated surge voltage  | 6 kV  | -              | -  |               |  |         |  |
| Rated current        | 16 A  | -              | -  |               |  |         |  |

| General information        |  |
|----------------------------|--|
| Note on contact resistance | approx. 1 mΩ of contact resistance<br>approx. 0.25 mΩ contact transition plug/<br>socket |

| Connection data            |   |               |
|----------------------------|---|---------------|
| Total number of potentials | 4 |               |
|                            |   | Connection 1  |
|                            |   | Pole number 4 |

| Physical data |                        |
|---------------|------------------------|
| Pin spacing   | 4.4 mm / 0.173 inches  |
| Width         | 19.3 mm / 0.76 inches  |
| Height        | 10.5 mm / 0.413 inches |
| Depth         | 37.2 mm / 1.465 inches |

| Mechanical data                         |  |
|---|--|
| Use                                     | General mains applications                               |
| Coding                                  | A  |
| Variable coding                         | No   |
| Marking                                 | plain  |
| Mating force of a plug-in connection    | Approx. 20 ... 70 N (depending on pole number)           |
| Retention force of a plug-in connection | When locked: > 80 N                                      |
| Unmating force of a plug-in connection  | Unlocked: approx. 20 ... 70 N (depending on pole number) |
| Number of mating cycles                 | 200, without resistive load                              |
| Type of distribution box                | Intermediate coupler                                     |
| Protection type                         | IP20; IP40 when mated                                    |

| Plug-in connection            |  |
|-------------------------------|--|
| Mismating protection          | Yes  |
| Note on mismating protection  | All <i>WINSTA</i> ® components are 100% protected against mismating when:<br>a.) plugging different numbers of poles<br>b.) plugging while rotated 180<br>c.) plugging while laterally staggered<br>d.) plugging one pole  |
| Locking lever                 | Yes  |
| Locking of plug-in connection | Locking lever  |
| Note on locking system        | All connectors for mounted installations (snap-in versions for lighting fixtures or devices, all types of PCB and distribution connectors) are factory-equipped with locking levers to ensure plugs and sockets are securely locked. Additional locking levers are only required for flying leads (plug/socket). |



| Material data  |   |
|--|---|
| Note (material data)   |   |
| <a href="#">Information on material specifications can be found here</a> |   |
| Color  | white                                   |
| Insulation material (main housing)                                       | Polyamide (PA66)                        |
| Flammability class per UL94  | V0                                      |
| Contact material   | Copper or copper alloy; surface-treated |
| Contact Plating  | Tin                                     |
| Fire load  | 0.079 MJ                                |
| Weight   | 4.7 g                                   |

| Environmental requirements               |  |
|--|--|
| Processing temperature                   | -5 ... +40 °C                              |
| Continuous operating temperature         | -35 ... +85 °C                             |
| Note on continuous operating temperature | Insulating parts for temperatures ≤ 105 °C |

| Commercial data       |               |
|-----------------------|---------------|
| eCl@ss 10.0           | 27-44-06-03   |
| eCl@ss 9.0            | 27-44-06-03   |
| ETIM 9.0              | EC002567      |
| ETIM 8.0              | EC002567      |
| PU (SPU)              | 50 pcs        |
| Packaging type        | Box           |
| Country of origin     | PL            |
| GTIN                  | 4055143231541 |
| Customs tariff number | 85366990990   |

| Environmental Product Compliance |                         |
|----------------------------------|-------------------------|
| RoHS Compliance Status           | Compliant, No Exemption |

Downloads

Environmental Product Compliance

Compliance Search

Environmental Product Compliance 890-654

↓

| Documentation |            |                 |   |
|---------------|------------|-----------------|---|
| Bid Text      |            |                 |   |
| 890-654       | 19.02.2019 | xml<br>2.96 KB  | ↓ |
| 890-654       | 30.11.2018 | doc<br>24.00 KB | ↓ |

CAD/CAE-Data

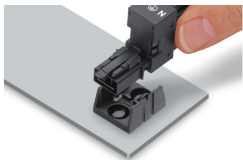
CAD data

2D/3D Models 890-654



Installation Notes

Installation



Secure the mounting plate via pins.