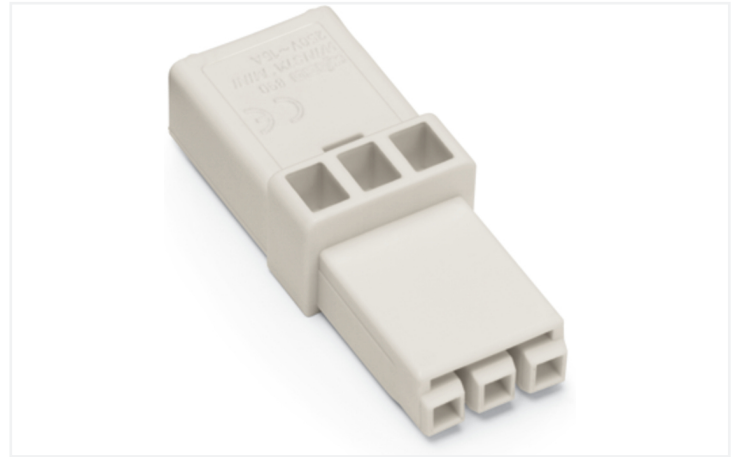
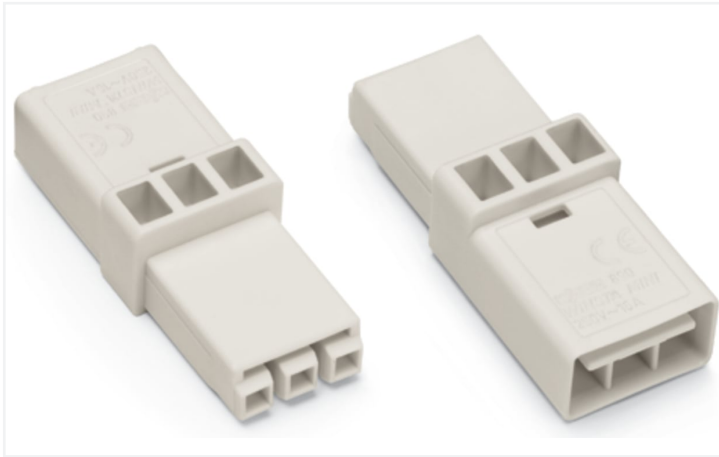


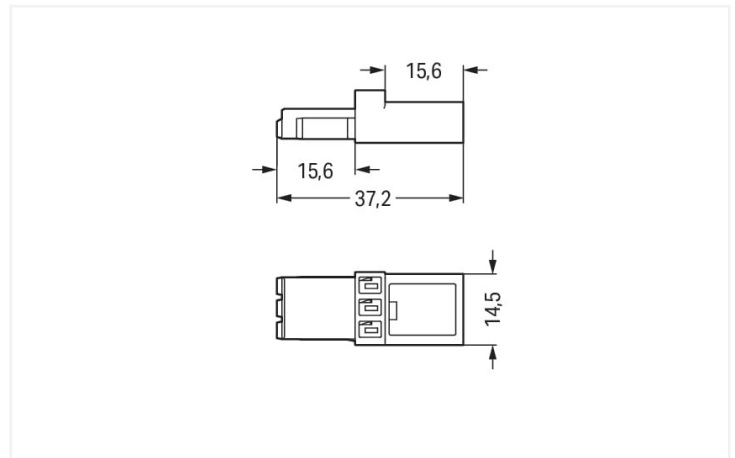
## Data Sheet | Item Number: 890-653

Intermediate coupler; 3-pole; Cod. A; for sockets and plugs; white

<https://www.wago.com/890-653>



Color: ■ white



Dimensions in mm

### Distribution connector *WINSTA*® MINI 3-pole

The *WINSTA*® MINI distribution connector A coding allows installation of solid and fine-stranded conductors. The pluggable installation connectors with spring pressure connection technology work completely without screw connections. They allow flexible, error-free installation in a large number of possible uses. The mechanical coding and color coding of the pluggable installation connector ensure error-free installation of the individual components – including protection against mismatching. Thanks to the color coding and mechanical A coding of *WINSTA*® MINI pluggable installation connectors, you can clearly distinguish different circuits. Due to its particularly compact dimensions, our *WINSTA*® MINI Pluggable Connection System with Push-in CAGE CLAMP® spring pressure connection technology is especially suitable in very tight spaces, i.e., for installations when very little room is available.

*WINSTA*® MINI solutions for your electrical installation – protected against mismatching and maintenance-free

*WINSTA*® is the pluggable connection system that is perfectly tailored to the strict requirements of electrical installation. It offers error-free installation of cables and components, quickly and reliably. Choose quality and durability – with protection against mismatching from WAGO makes the installation of electrical components substantially easier.

- protection against mismatching eliminates errors
- consistent IP40 protection
- suitable for any application
- ready for immediate use
- quick replacement of defective units during ongoing operation



Notes	
Note	At least one snap-in connector <b>WITHOUT</b> a locking lever is required on one side when connecting two lights directly via intermediate coupler.

Electrical data							
Ratings per		IEC/EN 60664-1		Approvals per		UL 1977	
Overvoltage category	III	III	II	Rated voltage		600 V	
Pollution degree	3	2	2	Rated current		14 A	
Nominal voltage	250 V	-	-				
Rated surge voltage	4 kV	-	-				
Rated current	16 A	-	-				

General information	
Note on contact resistance	approx. 1 mΩ of contact resistance approx. 0.25 mΩ contact transition plug/ socket

Connection data		
Total number of potentials	3	
		Connection 1
		Pole number 3

Physical data	
Pin spacing	4.4 mm / 0.173 inches
Width	14.5 mm / 0.571 inches
Height	10.5 mm / 0.413 inches
Depth	37.2 mm / 1.465 inches

Mechanical data	
Use	General mains applications
Coding	A
Variable coding	No
Marking	plain
Mating force of a plug-in connection	Approx. 20 ... 70 N (depending on pole number)
Retention force of a plug-in connection	When locked: > 80 N
Unmating force of a plug-in connection	Unlocked: approx. 20 ... 70 N (depending on pole number)
Number of mating cycles	200, without resistive load
Type of distribution box	Intermediate coupler
Protection type	IP20; IP40 when mated

Plug-in connection	
Mismating protection	Yes
Note on mismating protection	All <i>WINSTA</i> ® components are 100% protected against mismating when: a.) plugging different numbers of poles b.) plugging while rotated 180 c.) plugging while laterally staggered d.) plugging one pole
Locking lever	Yes
Locking of plug-in connection	Locking lever
Note on locking system	All connectors for mounted installations (snap-in versions for lighting fixtures or devices, all types of PCB and distribution connectors) are factory-equipped with locking levers to ensure plugs and sockets are securely locked. Additional locking levers are only required for flying leads (plug/socket).



Material data	
Note (material data)	<a href="#">Information on material specifications can be found here</a>
Color	white
Insulation material (main housing)	Polyamide (PA66)
Flammability class per UL94	V0
Contact material	Copper or copper alloy; surface-treated
Contact Plating	Tin
Fire load	0.059 MJ
Weight	3.5 g

Environmental requirements	
Processing temperature	-5 ... +40 °C
Continuous operating temperature	-35 ... +85 °C
Note on continuous operating temperature	Insulating parts for temperatures ≤ 105 °C

Commercial data	
Product Group	20 (Winsta)
eCl@ss 10.0	27-44-06-03
eCl@ss 9.0	27-44-06-03
ETIM 9.0	EC002567
ETIM 8.0	EC002567
PU (SPU)	50 pcs
Packaging type	Box
Country of origin	PL
GTIN	4050821295457
Customs tariff number	85366990990

Environmental Product Compliance	
RoHS Compliance Status	Compliant, No Exemption

Approvals / Certificates											
General approvals		Declarations of conformity and manufacturer's declarations									
 											
Approval	Standard	Certificate Name									
CCA DEKRA Certification B.V.	EN 61535	71-123231									
CCA DEKRA Certification B.V.	IEC 61535	NL-85020									
cURus Underwriters Laboratories Inc.	UL 1977	E45171									
		<table><tr><th>Approval</th><th>Standard</th><th>Certificate Name</th></tr><tr><td>EU-Declaration of Confor- mity WAGO GmbH &amp; Co. KG</td><td>-</td><td>-</td></tr><tr><td>UK-Declaration of Confor- mity WAGO GmbH &amp; Co. KG</td><td>-</td><td>-</td></tr></table>	Approval	Standard	Certificate Name	EU-Declaration of Confor- mity WAGO GmbH & Co. KG	-	-	UK-Declaration of Confor- mity WAGO GmbH & Co. KG	-	-
Approval	Standard	Certificate Name									
EU-Declaration of Confor- mity WAGO GmbH & Co. KG	-	-									
UK-Declaration of Confor- mity WAGO GmbH & Co. KG	-	-									



Approvals for marine applications



Approval	Standard	Certificate Name
ABS American Bureau of Ship- ping	Steel Vessel Rules	19-HG1869855-PDA
DNV GL Det Norske Veritas, Ger- manischer Lloyd	-	TAE00001Z6

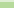

Downloads

Environmental Product Compliance

Compliance Search
Environmental Product Compliance 890-653



Documentation

Bid Text			
890-653	19.02.2019	xml 2.71 KB	<a href="#"></a>
890-653	30.11.2018	doc 23.50 KB	<a href="#"></a>

CAD/CAE-Data

CAD data
2D/3D Models 890-653

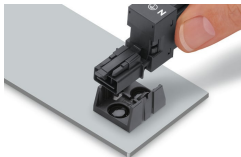


CAE data
WSCAD Universe 890-653
ZUKEN Portal 890-653



Installation Notes

Installation



Secure the mounting plate via pins.