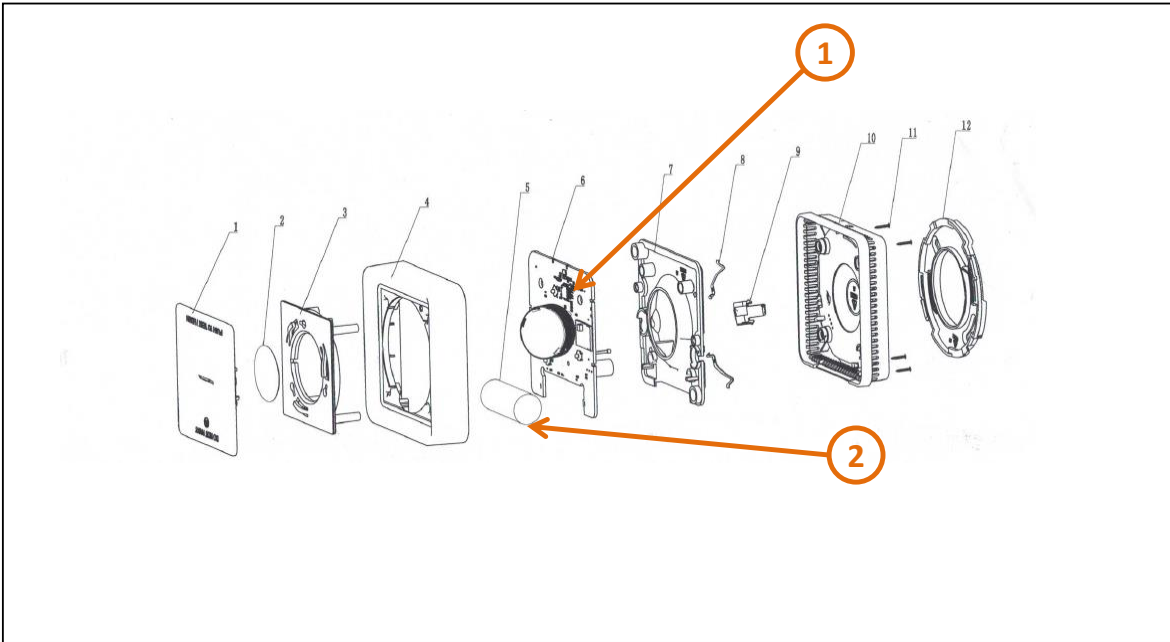


# Product End of Life Instructions

## WISER SMOKE ALARM



## End of Life Instructions



Recommendation	Number on drawing	Component / Material	Weight (in g)	Comment
To be depolluted	1	Electronic Board (Power) > 10cm <sup>2</sup>	51.81	PCBA
To be depolluted	2	Battery	22.82	

## Product description

Manufacturer identification	Schneider Electric Industries SAS
Brand name	Schneider Electric
Product function	High-end connected smoke alarm for global markets which can be integrated into the WISER system and also support temperature alarming and have the interconnection between devices even without gateway. The material constituents of the packaging are cardboard (60%) and paper (40%).
Product reference	CCT599001
Total representative product mass	160 g
Representative product dimensions	90mm x 90mm x 33.5mm
Accessories	NA
Date of information release	08-2024

## Additional information

<b>Legal information</b>	This product family is in the scope of European Union directive 2012/19/EU on Waste Electrical and Electronic Equipment (WEEE). The product family must be disposed according to the legislation of the country. This document is intended for use by end of life recyclers or treatment facilities. It provides the basic information to assure an appropriate end of life treatment for the components and materials of the product.	
<b>In case of special transportation: transportation method</b>	No	
<b>Recyclability potential</b>	<b>3%</b>	Recyclability rate has been calculated based on REEECY'LAB tool developed by Ecosystem, for components/materials not covered by the tool, data from the "ECO'DEEEE recyclability and recoverability calculation method" was taken. If no data was found a conservative assumption was used (0% recyclability).

Schneider Electric Industries SAS

Country Customer Care Center  
<http://www.se.com/contact>

35, rue Joseph Monier

CS 30323

F- 92500 Rueil Malmaison Cedex

RCS Nanterre 954 503 439

Capital social 928 298 512 €

[www.se.com](http://www.se.com)

Published by Schneider Electric

ENVEOLI2108022\_V2

© 2023 - Schneider Electric – All rights reserved

08-2024