

36 515 979 Product version from 4/1/2024



- HORIZONTAL RAIN, max. flow rate 6 l/min (at 3 bar)
- Function from: 4.5 l/min
- with anti-scale system

Technical data:

- cover plate 120 x 120 mm
- 1/2" connection

Notes:

- This product can help a building meet the requirements of Green Building Rating Systems, e.g. LEED®, BREEAM®, DGNB
- **Flow restrictor (8.3 l/min) to extend shower jet from approx. 500 mm to approx. 1000 mm**

Flow restrictor (8.3 l/min) to extend shower jet from approx. 500 mm to approx. 1000 mm

	Brushed Durabronze (23kt Gold)	36 515 979-28
	Chrome	36 515 979-00
	Brushed Platinum	36 515 979-06
	Platinum	36 515 979-08
	Dark Chrome	36 515 979-19
	Light Gold (PVD)	36 515 979-26
	Brushed Light Gold (PVD)	36 515 979-27
	Matte Black	36 515 979-33
	Brushed Gold (PVD)	36 515 979-37
	Brushed Dark Brass (PVD)	36 515 979-39
	Brushed Bronze (PVD)	36 515 979-42
	Brushed Dark Bronze (PVD)	36 515 979-43
	Brushed Champagne (22kt Gold)	36 515 979-46
	Champagne (22kt Gold)	36 515 979-47
	Brushed Chrome	36 515 979-93
	Brushed Dark Platinum	36 515 979-99

Required miscellaneous

- | | |
|--|--|
| | Concealed wall installation box - 35 205 970 90 |
| | • min. recess depth 85 mm |
| | • max. recess depth 110 mm |

Recommended miscellaneous

- | | |
|--|--|
| | xGRID Attachment set for integrating in the dry wall construction - 12 340 970 90 |
|--|--|

Required miscellaneous

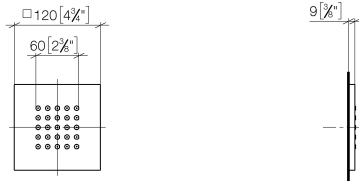
- | | |
|--|---|
| | WATER POINTS Adapter plate - 12 305 970 90 |
| | • adapter plate for mounting concealed rough parts 35 205 970 90 on the xGRID installation track. |

Required miscellaneous

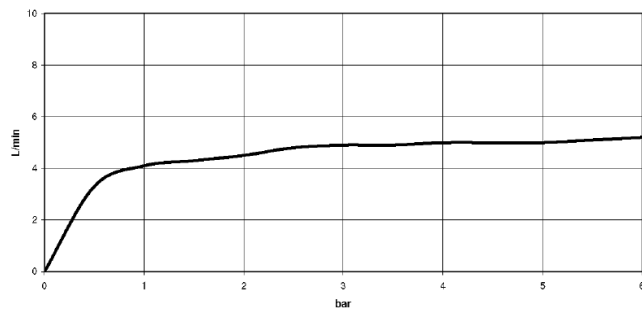
- | | |
|--|--|
| | xGRID Installation track 555 mm - 12 360 970 90 |
|--|--|

36 515 979 Product version from 4/1/2024

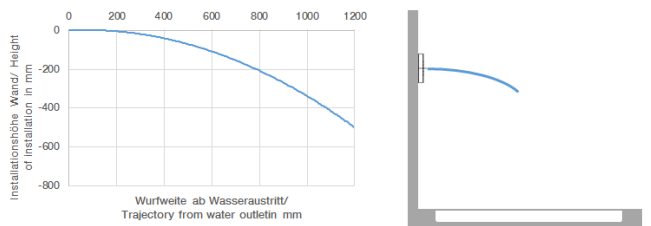
mm [inches]



Flow rate chart



Trajectory diagram



Codes & Standards

ASME A112.18.1	cUPC	DIN 4109	ISO 3822
Scottish Water Byelaws	UK Water Supply Regulations	Ü-Zeichen	



WATER POINTS Concealed body spray - Brushed Durabronz (23kt Gold)

SERIES-VARIOUS

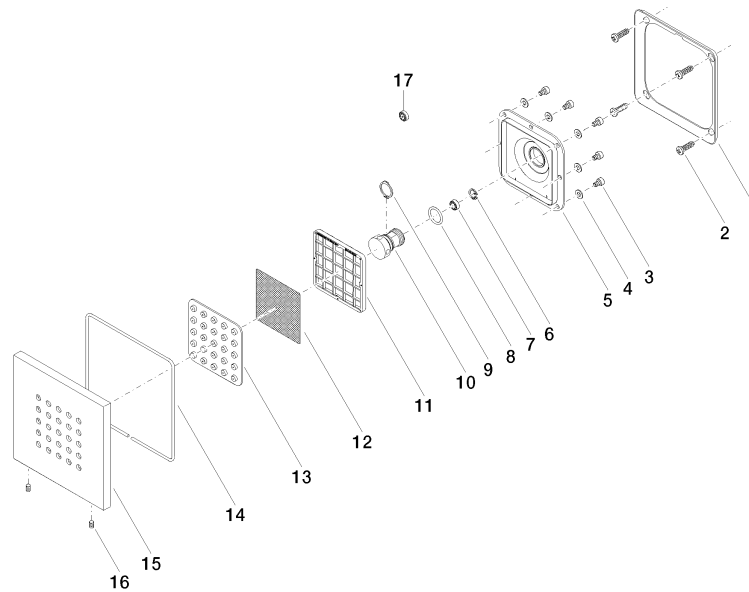
36 515 979 Product version from 4/1/2024

Certificates and sustainability

LGA_18

WRAS_1304

IAPMO_4976 (



Spare parts list

No.	Item Number	Name	Quantity used	Delivery time
17	09 23 01 052 90	Flow limiter yellow 8,3 l/min. -	1.00	14
12	09 29 30 043 90	Filter Body spray -	1.00	14
4	09 30 11 024 90	Washer Ø 4,3 -	8.00	14
14	09 14 03 117 90	Washer Ø 2,5 x 432 mm -	1.00	14
5	09 12 12 205 90	Retainer 85 x 85 x 18 mm -	1.00	14
9	09 16 01 017 90	Ring Retaining ring Ø 17 x 1 mm -	1.00	14
6	09 16 01 016 90	Ring Retaining ring Ø 10 x 1 mm -	1.00	14
13	09 12 01 075 90	Insert Spray pad -	1.00	14
1	09 28 01 024 90	Mounting 107,7 x 107,7 x 6,2 mm -	1.00	14
7	90 23 01 032 00 90	Flow limiter Set Ø 95 x 35 mm, 6 l/min. -	1.00	14
2	09 30 31 022 90	Mounting 4,8 x 16 mm -	4.00	14
15	09 27 98 004-28	Rosette 120 x 120 x 10 mm - Brushed Durabronz (23kt Gold)	1.00	40
3	09 30 30 031 90	Mounting Cylinder head screw with hexagon socket M4 x 6 mm -	8.00	14
16	09 31 11 048 90	Mounting Threaded pin with hexagon socket with point M4 x 8 mm -	1.00	14
11	09 17 97 057 90	Holder Spray pad 65,5 x 65,5 x 5,5 mm -	1.00	14
8	09 14 10 130 90	O-Ring EPDM 70 14,0 x 2,00 mm -	1.00	14
10	09 17 11 146 90	Connection -	1.00	-
Spare part can no longer be ordered, please order the replacement item				
0917111462090		Spray -		