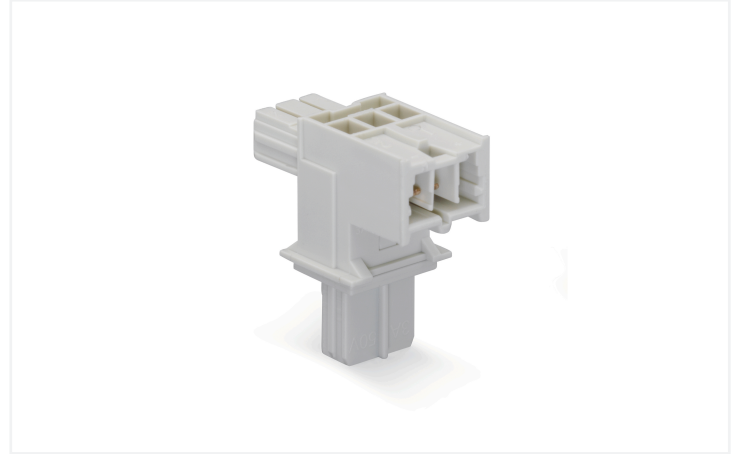
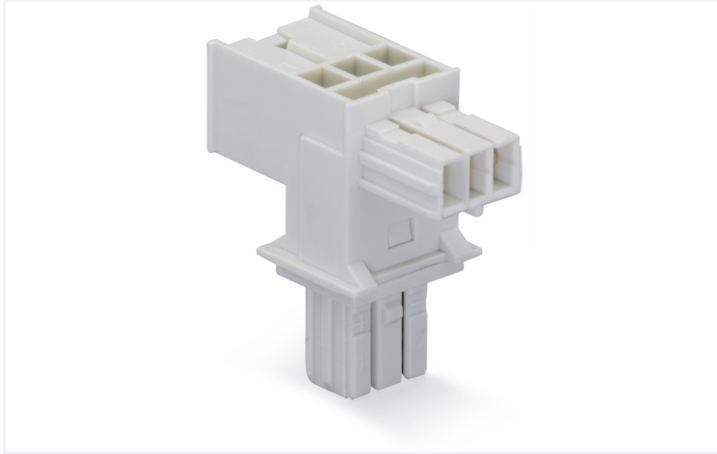


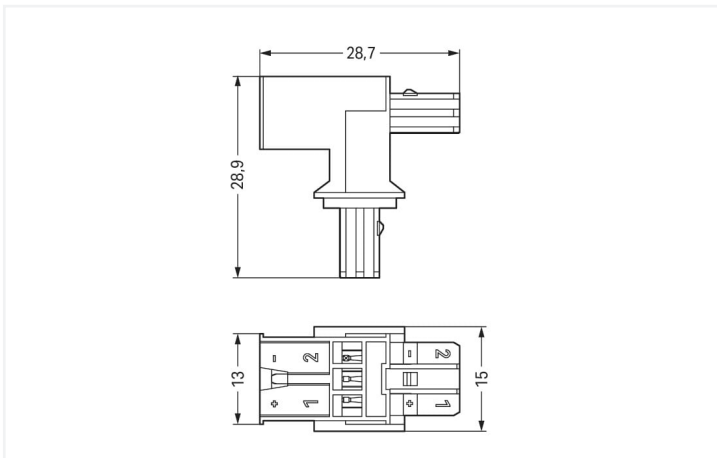
## Data Sheet | Item Number: 893-1656

T-distribution connector; 2-pole; 1 input; 2 outputs; light gray

<https://www.wago.com/893-1656>



Color: ■ light gray



Dimensions in mm

### Distribution connector *WINSTA*® KNX F coding

The *WINSTA*® KNX distribution connector with locking latch allows installation of fine-stranded and solid conductors. The pluggable installation connectors with spring pressure connection technology function without screw connections. They allow resource-efficient, error-free installation in a large number of possible uses. For greater security in electrical installations, the pluggable installation connector is equipped with mechanical protection against mismatching. The pluggable installation connector offers protection against contact with live components in accordance with protection type IP20 (Only when mated and secured with a strain relief housing (These compact connectors are not designed for use in open, easily accessible areas.)). The harmonised KNX interface represents a manufacturer-independent communication protocol for intelligently networking state-of-the-art home and building system technologies. *WINSTA*® KNX pluggable installation connectors with F coding secure connections with protection against mismatching related to power supplies.

*WINSTA*® KNX solutions for your electrical installation – protected against mismatching and maintenance-free

The *WINSTA*® Pluggable Connection System allows pluggable electrical installation. This saves time, lowers costs, and reduces the need for servicing. Choose durability and quality – with protection type IP20 from WAGO makes the electrical installation of electrical components visibly easier.

- products perfectly tailored to your requirements guarantee safe use
- with F coding for connections with protection against mismatching for supplying power
- ready to install and use immediately
- quick replacement of defective units during ongoing operation

Electrical data				
Ratings per		IEC/EN 60664-1		
Overvoltage category		III	III	II
Pollution degree		3	2	2
Nominal voltage		50 V	-	-
Rated surge voltage		0.8 kV	-	-
Rated current		3 A	-	-
General information				
Note on contact resistance		Approx. 3 mΩ contact resistance		

Connection data				
Total number of potentials		2	Connection 1	
			Pole number	2

Physical data	
Width	15 mm / 0.591 inches
Height	28.9 mm / 1.138 inches
Depth	28.7 mm / 1.13 inches

Mechanical data	
Technology	KNX
Coding	F
Variable coding	No
Marking	1+ 2-
Potential marking	1+ 2-
Mating force of a plug-in connection	Approx. 10 ... 15 N
Retention force of a plug-in connection	When locked: > 80 N
Unmating force of a plug-in connection	Unlocked: approx. 15 ... 20 N
Number of mating cycles	200
Type of distribution box	T-distribution connector
Protection type	IP20; Only when mated and secured with a strain relief housing (These compact connectors are not designed for use in open, easily accessible areas.)

Plug-in connection	
Mismating protection	Yes
Note on mismating protection	All WINSTA® components are 100% protected against mismating when: a.) plugging different numbers of poles b.) plugging while rotated 180 c.) plugging while laterally staggered d.) plugging one pole
Locking lever	Yes
Locking of plug-in connection	Locking lever
Note on locking system	All connectors for mounted installations (snap-in versions for lighting fixtures or devices, all types of PCB and distribution connectors) are factory-equipped with locking levers to ensure plugs and sockets are securely locked. Additional locking levers are only required for flying leads (plug/socket).
Number of locking levers	2



Material data	
Note (material data)	<a href="#">Information on material specifications can be found here</a>
Color	light gray
Insulation material (main housing)	Polyamide (PA66)
Flammability class per UL94	V0
Contact material	Copper alloy; surface-treated
Contact Plating	Tin
Fire load	0.054 MJ
Weight	3.1 g

Environmental requirements	
Processing temperature	-5 ... +40 °C
Continuous operating temperature	-35 ... +85 °C
Note on continuous operating temperature	Insulating parts for temperatures ≤ 105 °C

Commercial data	
Product Group	20 (Winsta)
eCl@ss 10.0	27-44-06-03
eCl@ss 9.0	27-44-06-03
ETIM 9.0	EC002567
ETIM 8.0	EC002567
PU (SPU)	25 pcs
Packaging type	Box
Country of origin	DE
GTIN	4045454547684
Customs tariff number	85366990990

Environmental Product Compliance	
RoHS Compliance Status	Compliant,No Exemption

Downloads	
Environmental Product Compliance	
Compliance Search	
Environmental Product Compliance 893-1656	

Documentation			
Bid Text			
893-1656	19.02.2019	xml 2.76 KB	
893-1656	08.01.2015	doc 22.50 KB	



CAD/CAE-Data	
CAE data	
WSCAD Universe 893-1656	