

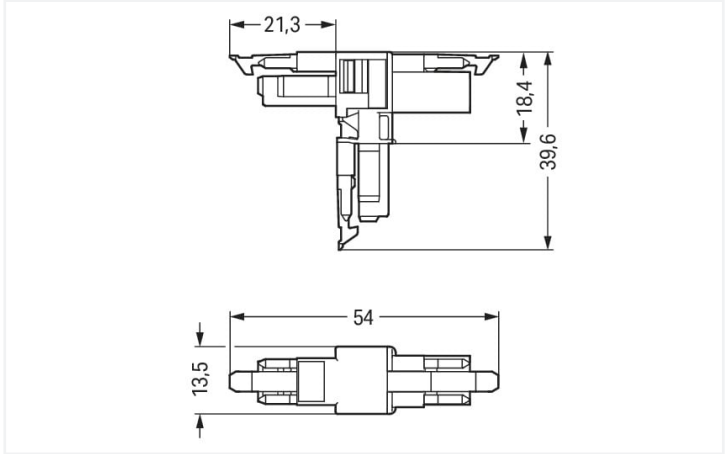
Data Sheet | Item Number: 890-1702

T-distribution connector; 2-pole; Cod. B; 1 input; 2 outputs; 3 locking levers; for flying leads; light green

<https://www.wago.com/890-1702>



Color: ■ light green



Dimensions in mm

Distribution connector *WINSTA*® MINI B coding

For power and signal transmission: The *WINSTA*® MINI distribution connector with protection type IP20. The pluggable installation connectors with spring pressure connection technology function completely without screw connections. They allow flexible, error-free installation in numerous applications. For greater protection in electrical installations, the pluggable installation connector is provided with mechanical protection against mismating. Pluggable installation connectors with B coding from the *WINSTA*® MINI line are available in gray, light green, or pink, allowing you to distinguish different circuits, for example for pumps, lighting, or sun blinds. Usage-specific pole marking is possible in addition. *WINSTA*® MINI satisfies the demand for miniaturisation. Our smallest pluggable connection system is primarily suited for lights, for instance, since due to LED technology, these offer much less space for the connection technology.

Lower costs through fast commissioning and elimination of service expenses – solutions from *WINSTA*® MINI

*WINSTA*® is the pluggable connection system that is ideally tailored to the strict requirements of electrical installation. It ensures error-free installation of cables and components, quickly and reliably. Enjoy the benefits of the pluggable version of our maintenance-free spring pressure connection technology tool! Plan your installation with with locking lever from WAGO.

- pluggable installation connectors with protection against mismating
- easy tool-free operation, a wide range of coding options
- for automation controllers
- exact dimensions
- convenient installation and commissioning

Notes	
Variants:	Other pole markings Other versions (or variants) can be requested from WAGO Sales or configured at <a href="https://configurator.wago.com/">https://configurator.wago.com/</a> .

Electrical data						
Ratings per		IEC/EN 60664-1			Approvals per	
Overvoltage category		III	III	II	UL 1977	
Pollution degree		3	2	2	Rated voltage	
Nominal voltage		250 V	-	-	Rated current	
Rated surge voltage		4 kV	-	-		
Rated current		16 A	-	-		



General information	
Note on contact resistance	approx. 1 mΩ of contact resistance approx. 0.25 mΩ contact transition plug/ socket

Connection data		
Total number of potentials	2	
		Connection 1
		Pole number 2

Physical data	
Pin spacing	4.4 mm / 0.173 inches
Width	13.5 mm / 0.531 inches
Height	39.6 mm / 1.559 inches
Depth	54 mm / 2.122 inches

Mechanical data	
Use	Control technology
Coding	B
Variable coding	No
Marking	1 2
Potential marking	1 2
Mating force of a plug-in connection	Approx. 20 ... 70 N (depending on pole number)
Retention force of a plug-in connection	When locked: > 80 N
Unmating force of a plug-in connection	Unlocked: approx. 20 ... 70 N (depending on pole number)
Number of mating cycles	200, without resistive load
Type of distribution box	T-distribution connector
Protection type	IP20; IP40 when mated
Suitable	for flying leads

Plug-in connection	
Mismating protection	Yes
Note on mismating protection	All WINSTA® components are 100% protected against mismating when: a.) plugging different numbers of poles b.) plugging while rotated 180 c.) plugging while laterally staggered d.) plugging one pole
Locking lever	Yes
Locking of plug-in connection	Locking lever
Note on locking system	All connectors for mounted installations (snap-in versions for lighting fixtures or devices, all types of PCB and distribution connectors) are factory-equipped with locking levers to ensure plugs and sockets are securely locked. Additional locking levers are only required for flying leads (plug/socket).
Number of locking levers	3



Material data		
Note (material data)		<a href="#">Information on material specifications can be found here</a>
Color	light green	
Material group	I	
Insulation material (main housing)	Polyamide (PA66)	
Flammability class per UL94	V0	
Contact material	Copper or copper alloy; surface-treated	
Contact Plating	Tin	
Fire load	0.14 MJ	
Weight	6.3 g	

Environmental requirements		
Processing temperature	-5 ... +40 °C	
Continuous operating temperature	-35 ... +85 °C	
Note on continuous operating temperature	Insulating parts for temperatures ≤ 105 °C	

Commercial data		
Product Group	20 (Winsta)	
eCl@ss 10.0	27-44-06-03	
eCl@ss 9.0	27-44-06-03	
ETIM 9.0	EC002567	
ETIM 8.0	EC002567	
PU (SPU)	25 pcs	
Packaging type	Box	
Country of origin	DE	
GTIN	4050821560005	
Customs tariff number	85366990990	

Environmental Product Compliance		
RoHS Compliance Status	Compliant,No Exemption	

## Downloads

### Environmental Product Compliance

Compliance Search			
Environmental Product Compliance 890-1702			

## Documentation

Bid Text			
890-1702	19.02.2019	xml 2.85 KB	
890-1702	03.12.2014	doc 22.50 KB	



CAD/CAE-Data	
CAD data	CAE data
2D/3D Models 890-1702	WSCAD Universe 890-1702

Installation Notes

Installation



Secure the mounting plate via pins.