







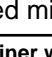
**TARA Wall-mounted bridge mixer with extending spout - Brushed Dark Platinum**

TARA

31 151 892 Product version from 1/1/2025



- 365-545mm projection
- pivoting spout
- laminar flow
- 1/2" connection
- gauge 150 mm - 10 mm
- max. flow 8.3 l/min at 3 bar flow pressure
- lead-free
- This product can help a building meet the requirements of Green Building Rating Systems, e.g. LEED®, BREEAM®, DGNB

	Brushed Dark Platinum	31 151 892-99
	Chrome	31 151 892-00
	Brushed Platinum	31 151 892-06
	Platinum	31 151 892-08
	Durabronze (23kt Gold)	31 151 892-09
	Dark Chrome	31 151 892-19
	Brushed Durabronze (23kt Gold)	31 151 892-28
	Brushed Dark Brass (PVD)	31 151 892-39
	Brushed Bronze (PVD)	31 151 892-42
	Brushed Dark Bronze (PVD)	31 151 892-43
	Brushed Champagne (22kt Gold)	31 151 892-46
	Champagne (22kt Gold)	31 151 892-47
	Brushed Chrome	31 151 892-93

**Recommended miscellaneous**

**Dispenser with rosette - Brushed Dark Platinum** 82 444 970-99

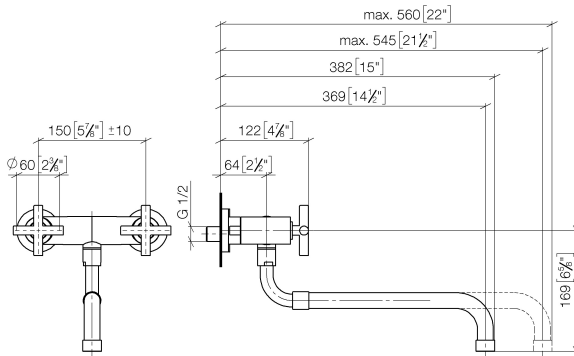


**Recommended miscellaneous**

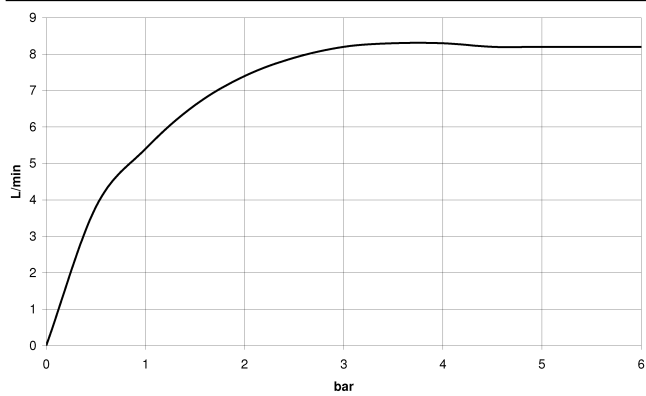
**Strainer waste with control handle - Brushed Dark Platinum** 10 710 970-99



31 151 892 Product version from 1/1/2025  
mm [inches]



**Flow rate chart**



**Codes & Standards**

DIN 4109

ISO 3822

Ü-Zeichen



# TARA Wall-mounted bridge mixer with extending spout - Brushed Dark Platinum

TARA

---

31 151 892 Product version from 1/1/2025

Certificates and sustainability

---

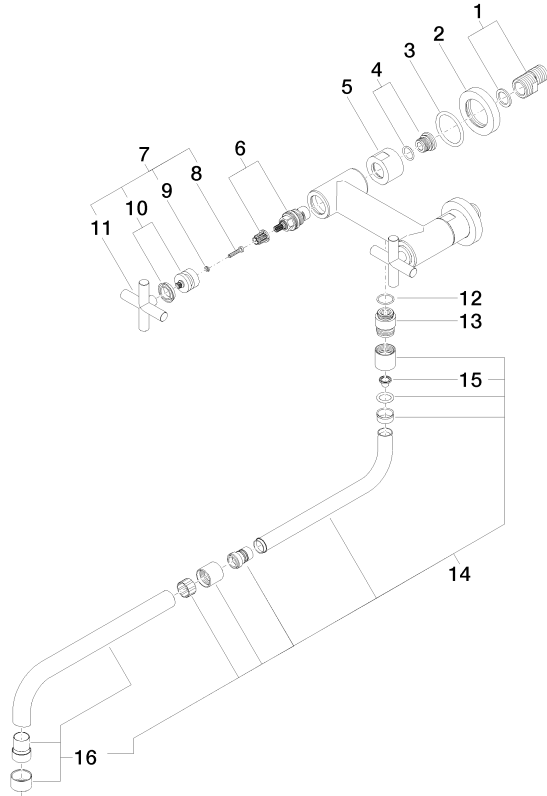
LGA_19	EPD-DOR-20230287 -IBA1-EN Environmental.prod uct-declarat
--------	--

# TARA Wall-mounted bridge mixer with extending spout - Brushed Dark Platinum

TARA

31 151 892 Product version from 1/1/2025

Parts for other finishes can be found here: [Chrome](#)



## Spare parts list

No.	Item Number	Name	Quantity used	Delivery time
	13 09 24 03 093 10-99	Nipple Ø 25 x 31 mm - Brushed Dark Platinum	1.00	40
	12 90 14 10 032 00 90	O-Ring 18,1 x 1,6 mm -	1.00	14
	1 04 11 04 003 00 90	S-connection 1 pair G3/4-AG x G1/2-AG -	2.00	14
	6 90 90 03 131 00 90	Head part clockwise closing 1/2" -	2.00	14
	4 04 29 05 014 00 90	Connection M18 x 1,5 -	2.00	14
	3 09 14 10 041 90	O-Ring 39,0 x 4,0 mm -	2.00	14
	2 09 27 89 004-99	Rosette Ø 60 x 11 mm - Brushed Dark Platinum	2.00	40
	5 09 23 30 012-99	Mounting for extending spout 3/4" - Brushed Dark Platinum	2.00	40
	14 04 28 25 075 00-99	Spout for sink unit wall mounting extending Ø 18 x 225 mm - Brushed Dark Platinum	1.00	40
	7 90 20 89 010 10-99	Handle TARA - Brushed Dark Platinum	2.00	40
	10 90 12 12 007 00-99	Handle Socket retainer Ø 29 x 26 mm - Brushed Dark Platinum	2.00	40
	15 09 29 03 027 90	Sieve seal Ø 15 x 10 mm -	1.00	14
	8 90 30 30 075 00 90	Mounting Cylinder head screw with hexagon socket Low profile M4 x 20 mm -	2.00	14
	11 09 20 89 010-99	Handle 70 x 70 x 22,5 mm - Brushed Dark Platinum	2.00	-
Spare part can no longer be ordered, please order the replacement item				
	90208901010-99	Handle TARA - Brushed Dark Platinum		
	16 90 28 25 076 00-99	Spout Ø 22 x 256 mm - Brushed Dark Platinum	1.00	40
	9 90 30 11 029 00 90	Connection Spring lock washer Ø 4 -	2.00	14