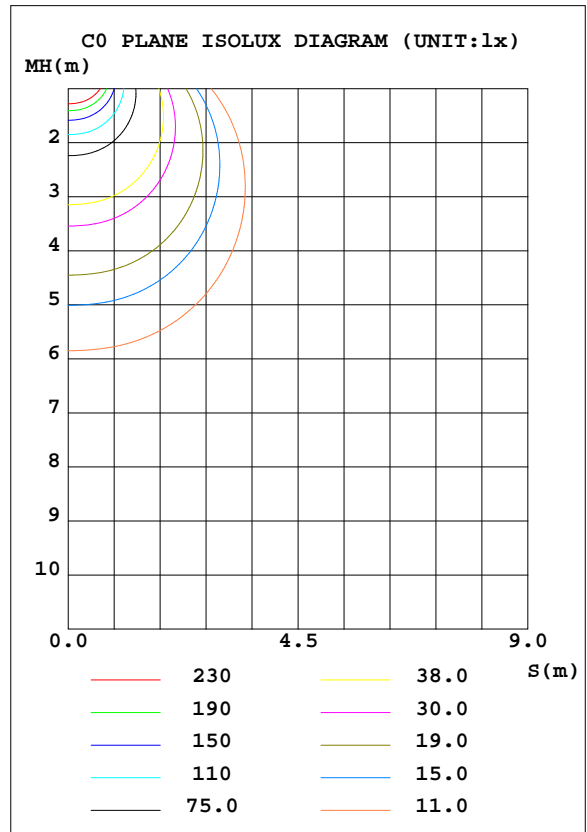
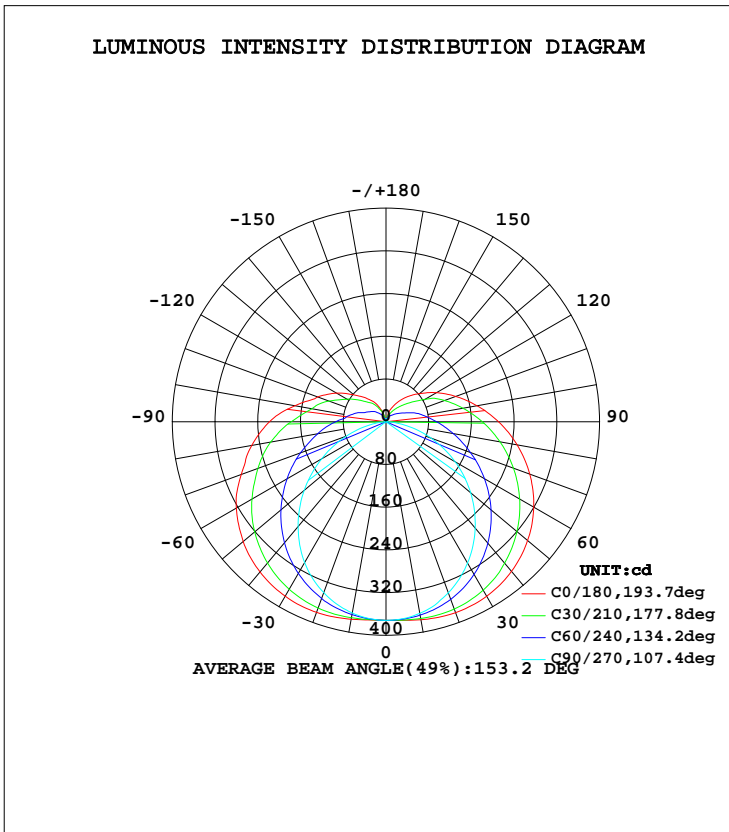


LUMINAIRE PHOTOMETRIC TEST REPORT

Test:U:230.2V I:0.0900A P:18.90W PF:0.9160 Lamp Flux:1937.76x1 lm		
NAME: 177-062_3000K	TYPE:18W	WEIGHT:
DIM.:	SPEC.:3000K	SERIAL No.:1
MFR.: Tronix Lighting	SUR.:0.0182	PROTECTION ANGLE:

DATA OF LAMP		PHOTOMETRIC DATA Eff: 102.53 lm/W			
MODEL	177-062_3000K	I <sub>max</sub> (cd)	380.5	S/MH(C0/180)	1.53
NOMINAL POWER(W)	18	LOR(%)	100.0	S/MH(C90/270)	1.23
RATED VOLTAGE(V)	230	TOTAL FLUX(lm)	1937.8	η UP, DN(C0-180)	10.0, 40.1
NOMINAL FLUX(lm)	1937.76	CIE CLASS	SEMI-D.	η UP, DN(C180-360)	9.9, 40.0
LAMPS INSIDE	1	η up(%)	19.9	CIBSE SHR NOM	1.50
TEST VOLTAGE(V)	230.2	η down(%)	80.1	CIBSE SHR MAX	1.55



C Range: 0 - 360DEG  
 C Interval: 30.0DEG  
 Test Speed: HIGH  
 Temperature:25.3DEG  
 Operators:DAMIN  
 Test Date:2019-12-05

γ Range: 0 - 180DEG  
 γ Interval: 1.0DEG  
 Test System:EVERFINE GO-2000A\_V1 SYSTEM V2.0.276  
 Humidity:65.0%  
 Test Distance:9.443m [K=1.0000]  
 Remarks:

ZONAL FLUX DIAGRAM

ZONAL FLUX DIAGRAM:

$\gamma$	C0	C45	C90	C135	C180	C225	C270	C315	$\gamma$	$\Phi$ zone	$\Phi$ total	$\Phi$ lum,lamp
10	376.4	371.0	364.4	369.8	375.5	369.7	363.8	370.4	0- 10	35.42	35.42	1.83,1.83
20	380.4	363.8	341.0	361.9	379.9	361.8	340.7	362.1	10- 20	103.8	139.3	7.19,7.19
30	377.3	347.1	305.5	345.1	377.4	345.2	304.6	344.8	20- 30	163.5	302.8	15.6,15.6
40	365.7	321.2	259.9	319.4	367.2	320.5	256.1	318.9	30- 40	207.9	510.7	26.4,26.4
50	346.1	288.5	206.9	287.2	348.9	288.9	200.2	285.6	40- 50	232.8	743.5	38.4,38.4
60	319.6	251.0	149.3	249.3	323.6	252.0	139.7	247.9	50- 60	236.9	980.5	50.6,50.6
70	286.5	211.2	89.96	209.7	288.4	212.9	79.30	208.2	60- 70	221.7	1202	62,62
80	249.3	172.5	34.79	172.9	255.2	174.6	25.66	169.5	70- 80	192.5	1395	72,72
90	210.9	137.7	1.230	136.8	218.3	136.0	1.800	134.5	80- 90	156.8	1552	80.1,80.1
100	173.1	108.7	1.860	107.5	173.4	105.3	2.273	105.9	90-100	123.7	1675	86.4,86.4
110	139.1	83.14	2.550	81.41	136.2	82.24	2.897	81.62	100-110	94.65	1770	91.3,91.3
120	109.2	58.55	3.198	65.02	107.7	61.15	3.461	54.87	110-120	67.99	1838	94.8,94.8
130	82.44	38.54	3.857	48.85	78.50	46.27	4.042	37.89	120-130	45.42	1883	97.2,97.2
140	60.75	25.63	4.416	32.45	57.89	34.03	4.631	24.29	130-140	28.07	1911	98.6,98.6
150	41.42	17.53	4.937	21.75	41.01	23.36	5.092	17.18	140-150	16.04	1927	99.5,99.5
160	24.24	9.772	5.339	10.66	19.79	11.97	5.452	9.636	150-160	7.501	1935	99.9,99.9
170	5.727	5.713	5.687	5.791	5.742	5.811	5.699	5.673	160-170	2.353	1937	100,100
180	5.730	5.823	5.813	5.785	5.807	5.841	5.819	5.788	170-180	0.5503	1938	100,100
DEG	LUMINOUS INTENSITY:cd									UNIT:lm		

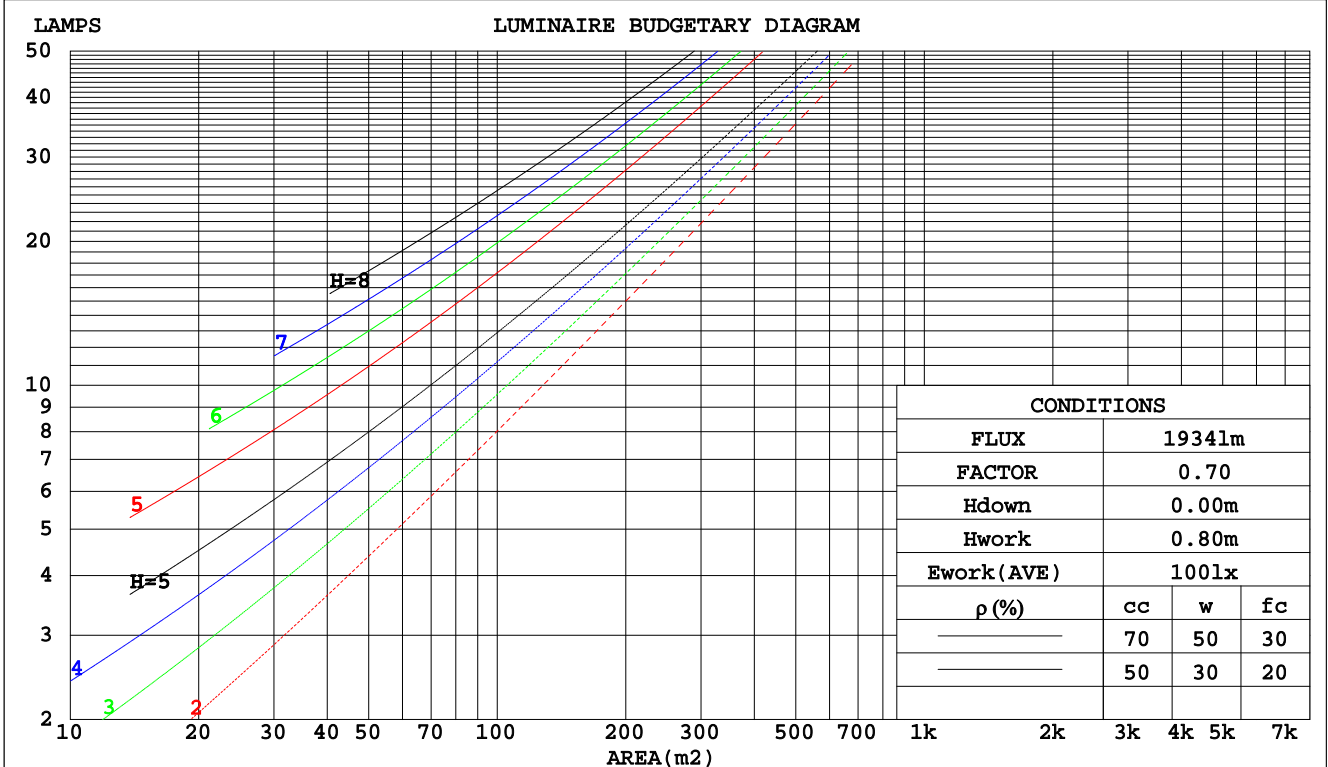
C Range: 0 - 360DEG  
 C Interval: 30.0DEG  
 Test Speed: HIGH  
 Temperature:25.3DEG  
 Operators:DAMIN  
 Test Date:2019-12-05

$\gamma$  Range: 0 - 180DEG  
 $\gamma$  Interval: 1.0DEG  
 Test System:EVERFINE GO-2000A\_V1 SYSTEM V2.0.276  
 Humidity:65.0%  
 Test Distance:9.443m [K=1.0000]  
 Remarks:

CU AND LUMINAIRE BUDGETARY ESTIMATE DIAGRAM

Test:U:230.2V I:0.0900A P:18.90W PF:0.9160 Lamp Flux:1937.76x1 lm		
NAME: 177-062_3000K	TYPE:18W	WEIGHT:
DIM.:	SPEC.:3000K	SERIAL No.:1
MFR.: Tronix Lighting	SUR.:0.0182	PROTECTION ANGLE:

pcc	80%			70%			50%			30%			10%			0
	50%	30%	10%	50%	30%	10%	50%	30%	10%	50%	30%	10%	50%	30%	10%	0
pw																0
pfc	20%			20%			20%			20%			20%			0
RCR	RCR:Room Cavity Ratio      Coefficients of Utilization(CU)															
0.0	1.14	1.14	1.14	1.09	1.09	1.09	1.00	1.00	1.00	.92	.92	.92	.84	.84	.84	.80
1.0	.95	.89	.84	.90	.85	.81	.82	.78	.75	.75	.72	.69	.68	.66	.63	.60
2.0	.81	.73	.66	.77	.70	.64	.70	.64	.59	.64	.59	.55	.58	.54	.51	.47
3.0	.70	.61	.53	.67	.58	.52	.61	.54	.48	.55	.50	.45	.50	.45	.41	.38
4.0	.61	.52	.44	.58	.50	.43	.53	.46	.40	.49	.42	.37	.44	.39	.35	.32
5.0	.54	.45	.37	.52	.43	.36	.47	.40	.34	.43	.37	.32	.39	.34	.30	.27
6.0	.48	.39	.32	.46	.38	.31	.42	.35	.29	.39	.32	.28	.36	.30	.26	.23
7.0	.44	.34	.28	.42	.33	.27	.38	.31	.26	.35	.29	.24	.32	.27	.23	.20
8.0	.40	.31	.25	.38	.30	.24	.35	.28	.23	.32	.26	.21	.30	.24	.20	.18
9.0	.36	.28	.22	.35	.27	.21	.32	.25	.20	.30	.23	.19	.27	.22	.18	.16
10.0	.33	.25	.20	.32	.24	.19	.30	.23	.18	.27	.21	.17	.25	.20	.16	.14



C Range: 0 - 360DEG  
 C Interval: 30.0DEG  
 Test Speed: HIGH  
 Temperature: 25.3DEG  
 Operators: DAMIN  
 Test Date: 2019-12-05

γ Range: 0 - 180DEG  
 γ Interval: 1.0DEG  
 Test System: EVERFINE GO-2000A\_V1 SYSTEM V2.0.276  
 Humidity: 65.0%  
 Test Distance: 9.443m [K=1.0000]  
 Remarks:

WEC AND CCEC

Test:U:230.2V I:0.0900A P:18.90W PF:0.9160 Lamp Flux:1937.76x1 lm		
NAME: 177-062_3000K	TYPE:18W	WEIGHT:
DIM.:	SPEC.:3000K	SERIAL No.:1
MFR.: Tronix Lighting	SUR.:0.0182	PROTECTION ANGLE:

ρcc	80%			70%			50%			30%			10%			0
ρw	50%	30%	10%	50%	30%	10%	50%	30%	10%	50%	30%	10%	50%	30%	10%	0
ρfc	20%			20%			20%			20%			20%			0
RCR	RCR:Room Cavity Ratio						Wall Exitance Coefficients(WEC)									
0.0																
1.0	.395	.225	.071	.382	.218	.069	.357	.205	.065	.334	.193	.062	.313	.181	.058	
2.0	.340	.186	.057	.328	.180	.056	.305	.170	.053	.284	.159	.050	.265	.150	.047	
3.0	.301	.160	.048	.290	.155	.047	.269	.146	.044	.250	.137	.042	.233	.129	.040	
4.0	.270	.140	.041	.260	.136	.040	.241	.128	.038	.224	.120	.036	.208	.113	.034	
5.0	.245	.125	.036	.236	.121	.035	.219	.114	.034	.203	.107	.032	.188	.101	.030	
6.0	.224	.112	.032	.216	.109	.031	.200	.103	.030	.186	.097	.028	.172	.091	.027	
7.0	.206	.102	.029	.199	.099	.028	.185	.093	.027	.171	.088	.026	.159	.083	.024	
8.0	.191	.093	.026	.184	.091	.026	.171	.086	.024	.159	.081	.023	.148	.076	.022	
9.0	.178	.086	.024	.172	.084	.023	.160	.079	.022	.148	.074	.021	.138	.070	.020	
10.0	.166	.080	.022	.161	.078	.022	.150	.073	.021	.139	.069	.020	.129	.065	.019	

ρcc	80%			70%			50%			30%			10%			0
ρw	50%	30%	10%	50%	30%	10%	50%	30%	10%	50%	30%	10%	50%	30%	10%	0
ρfc	20%			20%			20%			20%			20%			0
RCR	RCR:Room Cavity Ratio						Ceiling Cavity Exitance Coefficients(CCEC)									
0.0	.342	.342	.342	.293	.293	.293	.200	.200	.200	.115	.115	.115	.037	.037	.037	
1.0	.339	.309	.281	.290	.265	.242	.199	.182	.167	.114	.105	.097	.037	.034	.031	
2.0	.333	.286	.246	.285	.246	.213	.195	.170	.149	.113	.099	.087	.036	.032	.028	
3.0	.325	.269	.225	.279	.232	.195	.191	.162	.137	.111	.094	.081	.036	.031	.026	
4.0	.318	.257	.211	.273	.222	.183	.187	.155	.129	.108	.091	.076	.035	.030	.025	
5.0	.310	.247	.201	.266	.214	.175	.183	.150	.124	.106	.088	.073	.034	.029	.024	
6.0	.302	.239	.194	.260	.207	.169	.179	.145	.120	.104	.085	.071	.034	.028	.024	
7.0	.295	.233	.189	.254	.202	.165	.175	.142	.117	.102	.083	.070	.033	.027	.023	
8.0	.289	.227	.185	.248	.197	.162	.172	.138	.115	.100	.082	.068	.032	.027	.023	
9.0	.282	.223	.182	.243	.193	.159	.168	.136	.113	.098	.080	.067	.032	.026	.022	
10.0	.276	.218	.180	.238	.190	.157	.165	.133	.112	.096	.079	.067	.031	.026	.022	

C Range: 0 - 360DEG  
 C Interval: 30.0DEG  
 Test Speed: HIGH  
 Temperature:25.3DEG  
 Operators:DAMIN  
 Test Date:2019-12-05

γ Range: 0 - 180DEG  
 γ Interval: 1.0DEG  
 Test System:EVERFINE GO-2000A\_V1 SYSTEM V2.0.276  
 Humidity:65.0%  
 Test Distance:9.443m [K=1.0000]  
 Remarks:

Uncorrected UGR Table

Test:U:230.2V I:0.0900A P:18.90W PF:0.9160 Lamp Flux:1937.76x1 lm										
NAME: 177-062_3000K					TYPE:18W			WEIGHT:		
DIM.:					SPEC.:3000K			SERIAL No.:1		
MFR.: Tronix Lighting					SUR.:0.0182			PROTECTION ANGLE:		
ceiling/cavity	0.7	0.7	0.5	0.5	0.3	0.7	0.7	0.5	0.5	0.3
walls	0.5	0.3	0.5	0.3	0.3	0.5	0.3	0.5	0.3	0.3
working plane	0.2	0.2	0.2	0.2	0.2	0.2	0.2	0.2	0.2	0.2
Room dimensions	Viewed crosswise					Viewed endwise				
x = 2H y = 2H	24.3	25.7	24.8	26.2	26.8	21.4	22.7	21.9	23.3	23.9
3H	27.1	28.4	27.7	28.9	29.6	22.9	24.1	23.4	24.7	25.3
4H	28.6	29.8	29.2	30.4	31.1	23.5	24.7	24.1	25.3	25.9
6H	30.3	31.5	30.9	32.1	32.8	23.9	25.0	24.5	25.6	26.3
8H	31.3	32.4	31.9	33.0	33.7	24.0	25.1	24.6	25.7	26.4
12H	32.4	33.4	33.0	34.1	34.8	24.1	25.1	24.7	25.8	26.5
4H 2H	24.8	26.0	25.4	26.6	27.3	22.8	24.0	23.3	24.5	25.2
3H	27.9	28.9	28.5	29.6	30.3	24.6	25.6	25.2	26.2	27.0
4H	29.6	30.6	30.3	31.2	32.0	25.4	26.4	26.0	27.0	27.8
6H	31.5	32.4	32.2	33.1	33.9	26.1	26.9	26.7	27.6	28.4
8H	32.6	33.4	33.3	34.1	34.9	26.3	27.1	27.0	27.8	28.6
12H	33.8	34.6	34.5	35.3	36.1	26.4	27.2	27.1	27.9	28.7
8H 4H	30.0	30.8	30.6	31.5	32.3	26.7	27.5	27.4	28.2	29.0
6H	32.2	32.9	32.9	33.6	34.4	27.8	28.5	28.5	29.2	30.0
8H	33.5	34.1	34.2	34.8	35.7	28.3	28.9	29.0	29.6	30.5
12H	35.0	35.5	35.7	36.3	37.1	28.7	29.2	29.4	30.0	30.8
12H 4H	30.0	30.7	30.7	31.4	32.2	27.1	27.9	27.8	28.6	29.4
6H	32.3	32.9	33.0	33.7	34.5	28.5	29.1	29.2	29.8	30.7
8H	33.7	34.3	34.5	35.0	35.9	29.2	29.7	29.9	30.5	31.3
Variations with the observer position at spacings:										
S = 1.0H	+ 0.1 / - 0.1					+ 0.1 / - 0.1				
1.5H	+ 0.2 / - 0.2					+ 0.2 / - 0.3				
2.0H	+ 0.2 / - 0.3					+ 0.3 / - 0.5				

CIE Pub.117 Corrected 1938 lm Total Lamp Luminous Flux.(8log(F/F0) = 2.3)

C Range: 0 - 360DEG  
 C Interval: 30.0DEG  
 Test Speed: HIGH  
 Temperature:25.3DEG  
 Operators:DAMIN  
 Test Date:2019-12-05

γ Range: 0 - 180DEG  
 γ Interval: 1.0DEG  
 Test System:EVERFINE GO-2000A\_V1 SYSTEM V2.0.276  
 Humidity:65.0%  
 Test Distance:9.443m [K=1.0000]  
 Remarks:

UTILIZATION FACTORS TABLE

Test:U:230.2V I:0.0900A P:18.90W PF:0.9160 Lamp Flux:1937.76x1 lm		
NAME: 177-062_3000K	TYPE:18W	WEIGHT:
DIM.:	SPEC.:3000K	SERIAL No.:1
MFR.: Tronix Lighting	SUR.:0.0182	PROTECTION ANGLE:

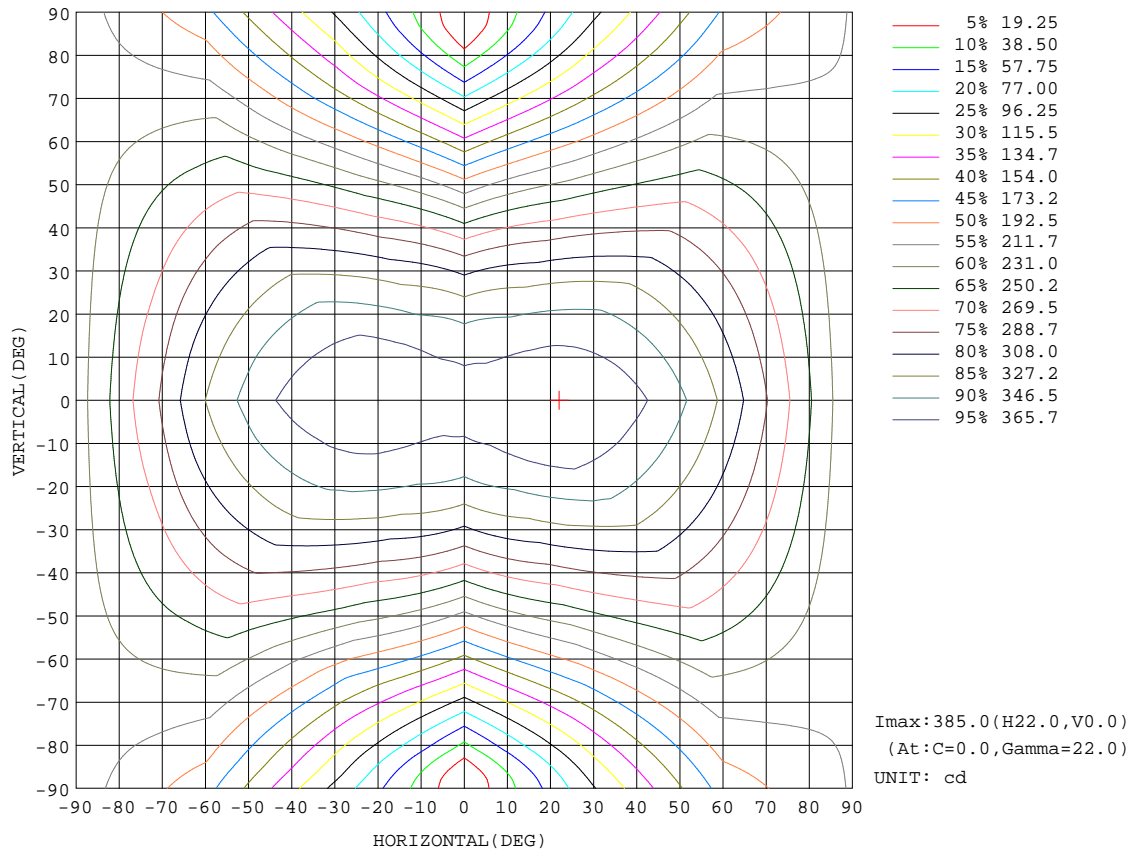
REFLECTANCE										
Ceiling	0.8	0.8	0.8	0.7	0.7	0.7	0.5	0.5	0.5	0
Walls	0.7	0.5	0.3	0.7	0.5	0.3	0.7	0.5	0.3	0
Working plane	0.2	0.2	0.2	0.2	0.2	0.2	0.2	0.2	0.2	0
ROOM INDEX	UTILIZATION FACTORS(PERCENT) $k(RI) \times RCR = 5$									
k = 0.60	46	34	26	45	33	26	43	32	26	19
0.80	55	42	34	54	41	34	51	40	33	25
1.00	63	50	41	61	49	41	57	49	39	31
1.25	70	57	48	68	56	47	63	53	46	36
1.50	75	63	54	72	61	53	67	58	51	40
2.00	83	71	63	79	69	61	73	65	58	46
2.50	87	77	68	84	74	67	77	69	63	50
3.00	91	81	74	87	78	71	80	73	67	53
4.00	96	87	81	92	84	78	84	78	73	58
5.00	99	92	85	95	88	83	87	82	77	61
ROOM INDEX	UF(total)									Direct
According to DIN EN 13032-2 2004			Suspended				SHRNOM = 1.25			

C Range: 0 - 360DEG  
 C Interval: 30.0DEG  
 Test Speed: HIGH  
 Temperature:25.3DEG  
 Operators:DAMIN  
 Test Date:2019-12-05

$\gamma$  Range: 0 - 180DEG  
 $\gamma$  Interval: 1.0DEG  
 Test System:EVERFINE GO-2000A\_V1 SYSTEM V2.0.276  
 Humidity:65.0%  
 Test Distance:9.443m [K=1.0000]  
 Remarks:

ISOCANDELA DIAGRAM

Test:U:230.2V I:0.0900A P:18.90W PF:0.9160 Lamp Flux:1937.76x1 lm		
NAME: 177-062_3000K	TYPE:18W	WEIGHT:
DIM.:	SPEC.:3000K	SERIAL No.:1
MFR.: Tronix Lighting	SUR.:0.0182	PROTECTION ANGLE:

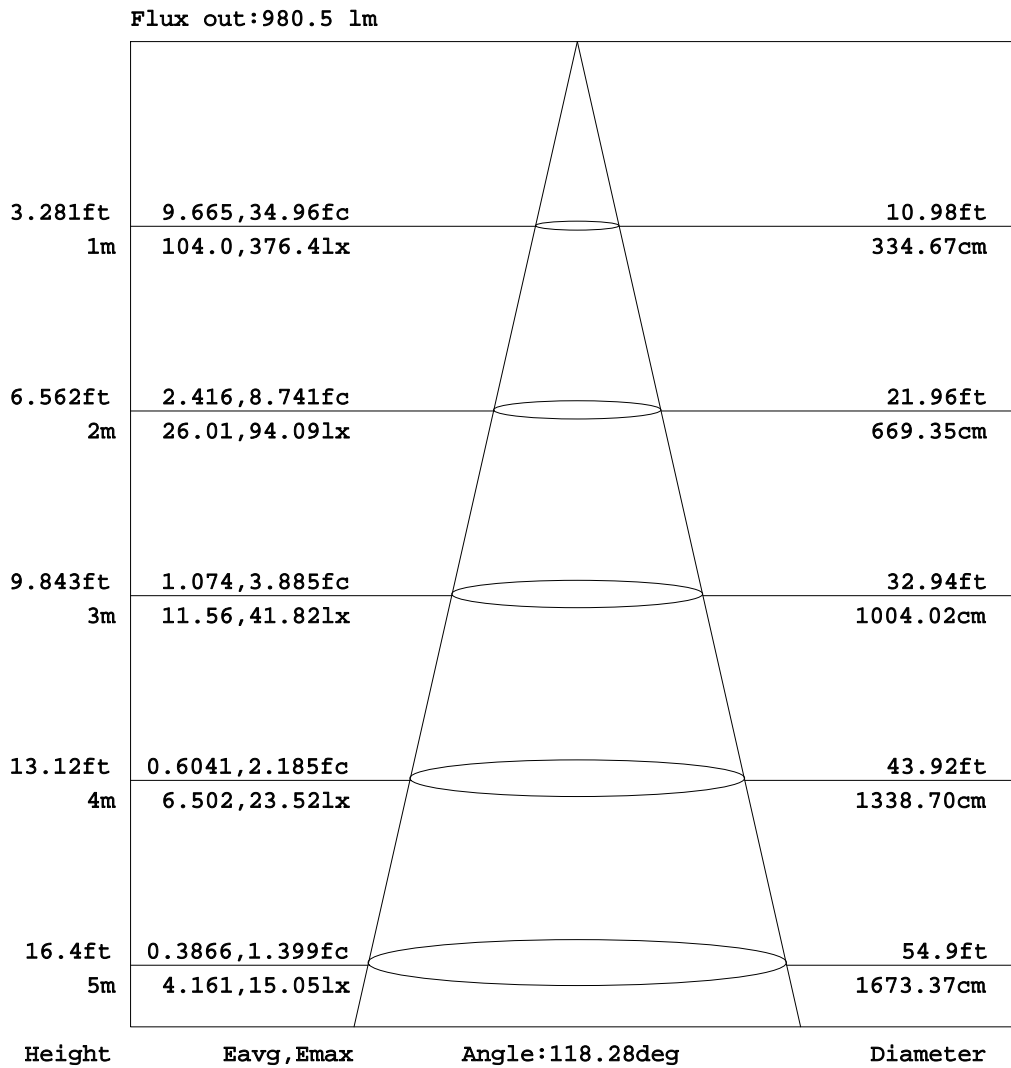


C Range: 0 - 360DEG  
 C Interval: 30.0DEG  
 Test Speed: HIGH  
 Temperature: 25.3DEG  
 Operators: DAMIN  
 Test Date: 2019-12-05

γ Range: 0 - 180DEG  
 γ Interval: 1.0DEG  
 Test System: EVERFINE GO-2000A\_V1 SYSTEM V2.0.276  
 Humidity: 65.0%  
 Test Distance: 9.443m [K=1.0000]  
 Remarks:

AAI Figure

Test:U:230.2V I:0.0900A P:18.90W PF:0.9160 Lamp Flux:1937.76x1 lm		
NAME: 177-062_3000K	TYPE:18W	WEIGHT:
DIM.:	SPEC.:3000K	SERIAL No.:1
MFR.: Tronix Lighting	SUR.:0.0182	PROTECTION ANGLE:



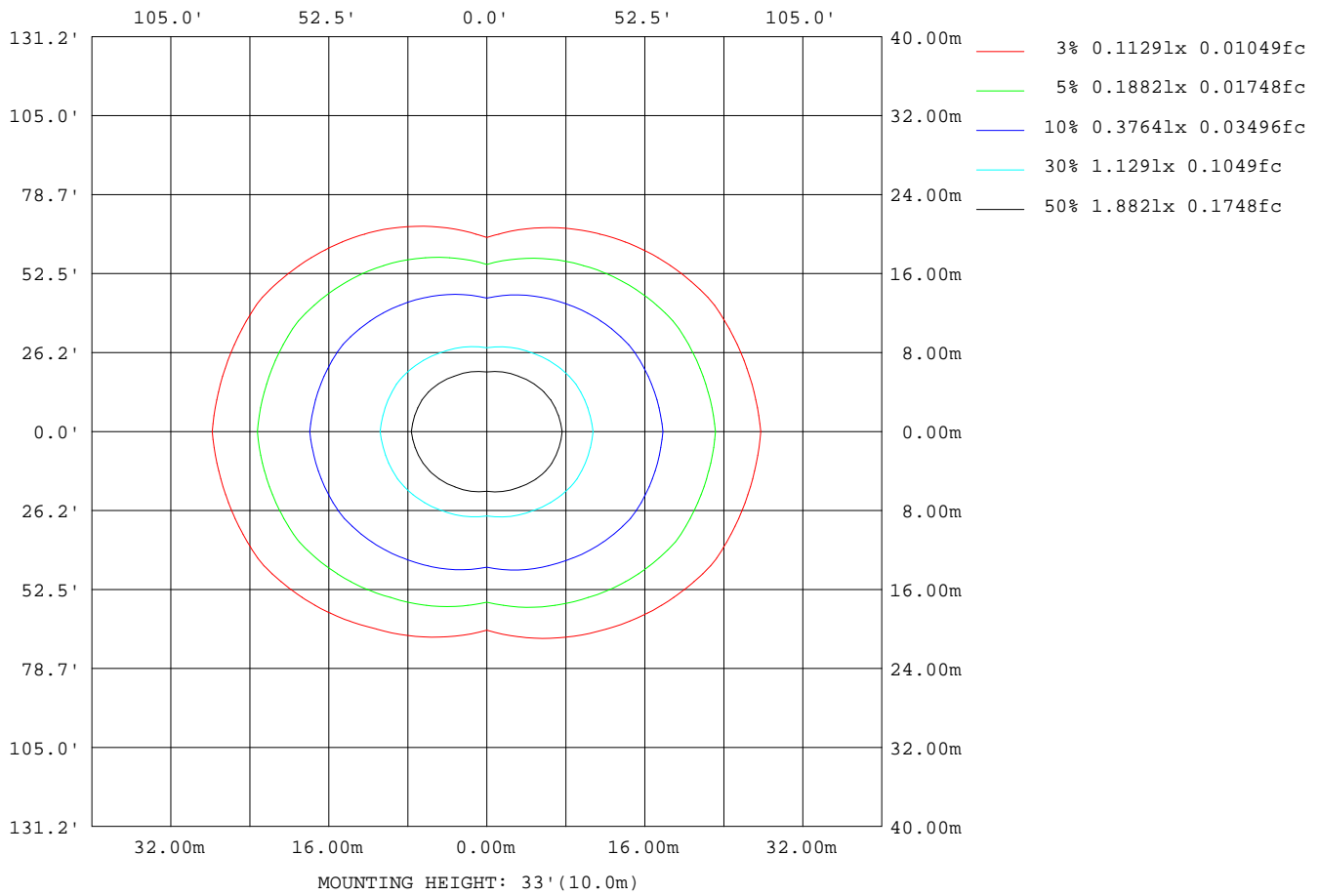
Note:The Curves indicate the illuminated area and the average illumination when the luminaire is at different distance.

C Range: 0 - 360DEG  
 C Interval: 30.0DEG  
 Test Speed: HIGH  
 Temperature:25.3DEG  
 Operators:DAMIN  
 Test Date:2019-12-05

γ Range: 0 - 180DEG  
 γ Interval: 1.0DEG  
 Test System:EVERFINE GO-2000A\_V1 SYSTEM V2.0.276  
 Humidity:65.0%  
 Test Distance:9.443m [K=1.0000]  
 Remarks:

ISOLUX DIAGRAM

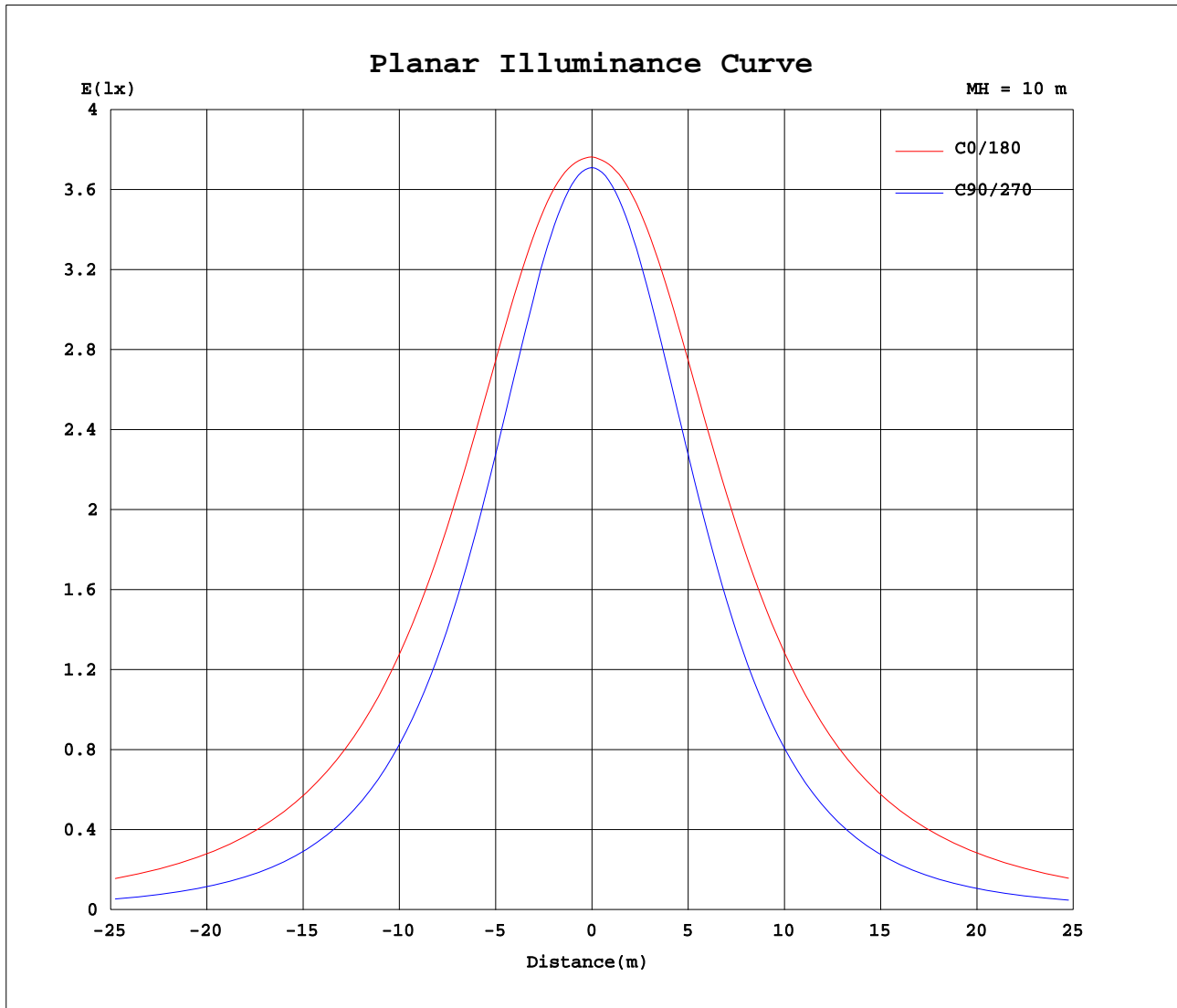
Test:U:230.2V I:0.0900A P:18.90W PF:0.9160 Lamp Flux:1937.76x1 lm		
NAME: 177-062_3000K	TYPE:18W	WEIGHT:
DIM.:	SPEC.:3000K	SERIAL No.:1
MFR.: Tronix Lighting	SUR.:0.0182	PROTECTION ANGLE:



C Range: 0 - 360DEG  
 C Interval: 30.0DEG  
 Test Speed: HIGH  
 Temperature:25.3DEG  
 Operators:DAMIN  
 Test Date:2019-12-05

γ Range: 0 - 180DEG  
 γ Interval: 1.0DEG  
 Test System:EVERFINE GO-2000A\_V1 SYSTEM V2.0.276  
 Humidity:65.0%  
 Test Distance:9.443m [K=1.0000]  
 Remarks:

Planar Illuminance Curve



C Range: 0 - 360DEG  
 C Interval: 30.0DEG  
 Test Speed: HIGH  
 Temperature: 25.3DEG  
 Operators: DAMIN  
 Test Date: 2019-12-05

$\gamma$  Range: 0 - 180DEG  
 $\gamma$  Interval: 1.0DEG  
 Test System: EVERFINE GO-2000A\_V1 SYSTEM V2.0.276  
 Humidity: 65.0%  
 Test Distance: 9.443m [K=1.0000]  
 Remarks:

LUMINOUS DISTRIBUTION INTENSITY DATA

Test:U:230.2V I:0.0900A P:18.90W PF:0.9160 Lamp Flux:1937.76x1 lm		
NAME: 177-062_3000K	TYPE:18W	WEIGHT:
DIM.:	SPEC.:3000K	SERIAL No.:1
MFR.: Tronix Lighting	SUR.:0.0182	PROTECTION ANGLE:

Table--1

UNIT: cd

C( DEG) γ (DEG)	0	30	60	90	120	150	180	210	240	270	300	330							
0	372	372	372	372	372	372	372	372	372	372	372	372							
5	373	373	371	370	370	372	373	372	370	370	371	372							
10	376	374	368	364	367	373	375	373	367	364	367	374							
15	379	375	362	355	361	373	378	373	361	354	361	374							
20	380	373	354	341	353	371	380	371	352	341	352	372							
25	380	370	343	325	342	368	380	368	341	324	341	368							
30	377	364	330	306	328	362	377	362	328	305	328	362							
35	373	356	314	284	313	353	373	355	313	282	312	354							
40	366	345	297	260	295	344	367	345	296	256	294	344							
45	357	334	277	234	276	332	359	334	277	229	274	332							
50	346	320	257	207	255	319	349	321	257	200	253	318							
55	334	305	235	179	234	305	337	306	236	170	232	303							
60	320	289	213	149	210	289	324	290	214	140	209	287							
65	304	272	191	120	186	273	308	272	192	109	187	269							
70	286	254	168	90.0	164	255	288	255	170	79.3	165	251							
75	268	235	147	61.1	145	237	272	238	149	50.9	144	233							
80	249	217	128	34.8	126	219	255	219	130	25.7	125	214							
85	230	198	110	10.2	109	202	237	199	112	7.21	107	196							
90	211	180	94.9	1.23	91.5	182	218	178	94.2	1.80	91.9	177							
95	192	163	81.7	1.49	76.9	164	197	158	77.9	1.94	78.9	160							
100	173	147	70.7	1.86	66.1	149	173	141	69.5	2.27	68.1	144							
105	156	131	61.1	2.17	55.0	134	152	129	60.5	2.63	58.8	129							
110	139	117	49.4	2.55	43.2	120	136	114	50.6	2.90	48.9	114							
115	124	103	39.6	2.87	39.5	106	121	97.5	42.3	3.17	39.0	101							
120	109	84.2	32.8	3.20	36.5	93.7	108	84.8	37.4	3.46	29.7	80.1							
125	95.1	67.3	27.3	3.54	33.7	81.5	92.7	73.6	33.7	3.75	25.9	65.9							
130	82.4	54.2	22.9	3.86	29.8	68.0	78.5	62.5	30.0	4.04	22.2	53.7							
135	71.3	44.1	18.9	4.14	24.5	53.0	67.6	53.1	25.7	4.33	18.7	43.3							
140	60.7	35.4	15.8	4.42	20.4	44.5	57.9	46.7	21.3	4.63	15.5	33.2							
145	50.8	28.4	14.0	4.68	17.0	33.1	49.0	40.8	17.9	4.88	13.9	26.7							
150	41.4	22.0	13.0	4.94	13.7	29.8	41.0	32.3	14.4	5.09	13.0	21.4							
155	32.1	16.7	10.5	5.14	5.73	23.6	30.3	24.3	6.00	5.27	10.7	16.4							
160	24.2	13.8	5.71	5.34	5.63	15.7	19.8	18.3	5.63	5.45	5.61	13.7							
165	12.0	9.83	5.55	5.53	5.70	6.11	8.90	6.15	5.74	5.60	5.57	10.2							
170	5.73	5.74	5.69	5.69	5.78	5.81	5.74	5.84	5.79	5.70	5.70	5.65							
175	5.70	5.78	5.77	5.77	5.81	5.77	5.77	5.85	5.82	5.78	5.77	5.70							
180	5.73	5.83	5.82	5.81	5.82	5.75	5.81	5.84	5.84	5.82	5.83	5.75							

C Range: 0 - 360DEG  
 C Interval: 30.0DEG  
 Test Speed: HIGH  
 Temperature:25.3DEG  
 Operators:DAMIN  
 Test Date:2019-12-05

γ Range: 0 - 180DEG  
 γ Interval: 1.0DEG  
 Test System:EVERFINE GO-2000A\_V1 SYSTEM V2.0.276  
 Humidity:65.0%  
 Test Distance:9.443m [K=1.0000]  
 Remarks: