

Concealed single-lever mixer with integrated shower connection - Brushed  
Durabron (23kt Gold)

SERIES-VARIOUS

36 050 970 Product version from 10/1/2023



- without rosette
  - WRAS
- Intrinsic protection against back flow.**

Intrinsic protection against back flow.

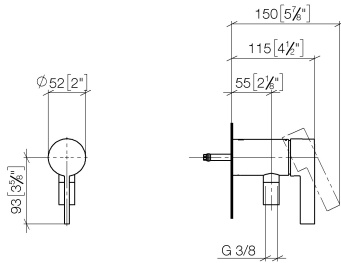
Required miscellaneous



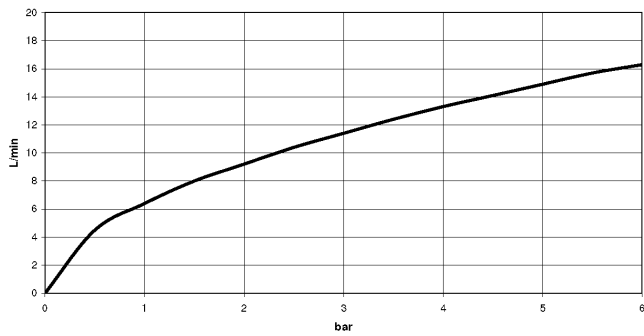
- Concealed wall mounting -**
- min. recess depth 80 mm
  - max. recess depth 105 mm

35 050 970 90

36 050 970 Product version from 10/1/2023  
mm [inches]



**Flow rate chart**



**Codes & Standards**

DIN 4109

EN 1717

ISO 3822

Scottish Water  
Byelaws

UK Water Supply  
Regulations

Ü-Zeichen



Concealed single-lever mixer with integrated shower connection - Brushed  
Durabronze (23kt Gold)

SERIES-VARIOUS

---

36 050 970 Product version from 10/1/2023

Certificates and sustainability

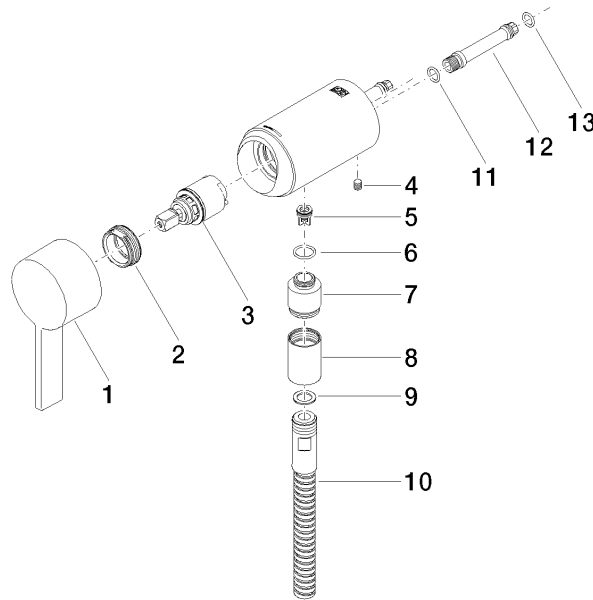
---

Belgaqua\_21-025-2 WRAS\_2011

LGA\_29

EPD-DOR-20230287  
-IBA1-EN  
Environmental.prod  
uct-declarat

36 050 970 Product version from 10/1/2023



## Spare parts list

No.	Item Number	Name	Quantity used	Delivery time
2	09 24 04 266 90	Mounting Ø 28 x 10,8 mm -	1.00	14
12	09 18 40 230 90	Connection 62 x 11 x 11 mm -	1.00	14
3	90 15 05 044 04 90	Cartridge Ø 25 x 51 mm -	1.00	14
9	90 14 20 026 00 90	Washer 14 x 8 x 2 mm Centellen WS 3820 -	1.00	14
8	90 21 02 069 00-28	Cover/sleeve M20 x 1 - Brushed Durabron (23kt Gold)	1.00	40
4	09 31 11 004 90	Mounting Threaded pin with hexagon socket M5 x 8 mm	1.00	-
Spare part can no longer be ordered, please order the replacement item				
0431110040090 Mounting -				
6	09 14 10 213 90	O-Ring EPDM 70 12,0 x 1,5 mm -	1.00	14
5	09 23 01 131 90	Back-flow preventer without limitation Ø 10 x 10,5 mm -	1.00	14
11	90 14 10 060 00 90	O-Ring 8,0 x 1,5 mm -	1.00	14
1	90 20 97 064 00-28	Handle Lever 50 x 130 x 28 mm - Brushed Durabron (23kt Gold)	1.00	40
10	28 322 970-28	Metal shower hose 1/2" x 3/8" x 1750 mm - Brushed Durabron (23kt Gold)	1.00	40
7	09 24 03 281-28	Nipple Ø 22 x 26 mm - Brushed Durabron (23kt Gold)	1.00	40
13	09 14 10 061 90	O-Ring EPDM 70 7,5 x 1,52 mm -	1.00	14