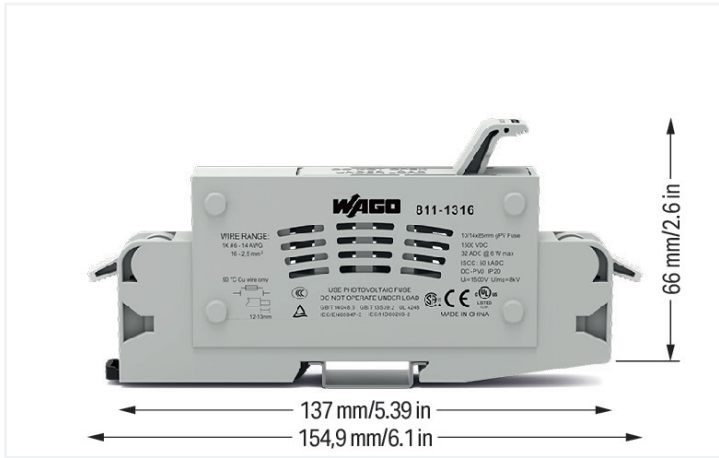


# Data Sheet | Item Number: 811-1316

2-conductor fuse holder ; with pivoting fuse holder; with test option; for cylindrical fuses 10/14 x 85 mm; for photovoltaic applications; 1-pole; 1500 VDC; for DIN-rail 35 x 15 and 35 x 7.5; 16 mm<sup>2</sup>; CAGE CLAMP®; light gray



<https://www.wago.com/811-1316>



Color: ■ light gray





Fuse terminal block, 811 Series, lever

This fuse terminal block (item number 811-1316) is designed for simple and secure connections. Ensure that the strip lengths are between 12 and 13 mm when connecting conductors to this fuse terminal block. This product incorporates conductor terminals and utilizes CAGE CLAMP®. Our highly-rated and maintenance-free CAGE CLAMP® connection makes it easy to connect all conductor types without having to prepare the conductor. For example, you don't need to crimp ferrules. Depending on the type of conductor, this fuse terminal block is ideal for conductor cross sections ranging from 2.5 mm² to 16 mm².

Notes	
Safety Information	The fuse holder must not be opened under load.
Safety information 2	Do not cover the ventilation openings.

Electrical data			
Ratings per	IEC/HD 60269-2		
Overvoltage category	III	III	II
Pollution degree	3	2	2
Nominal voltage	1500 V	-	-
Rated impulse withstand voltage	8 kV	-	-
Rated current	32 A	-	-

Ratings per IEC/EN – Notes	
Ratings (note)	Electrical ratings are specified in the technical data of both fuse terminal block and fuse. When selecting glass cartridge fuses, make sure that the listed power loss is not exceeded.

Approvals per	UL 4248-19		
Use group	B	C	D
Rated voltage	-	-	-

Approvals per	CSA 22.2		
Use group	B	C	D
Rated voltage	-	-	-

Power Loss	
Power loss $P_1$ (max.)	6 W
Maximum power loss $P_{loss}$ of fuse insert for overload and short-circuit protection (individual arrangement)	3 W
Maximum power loss $P_{loss}$ of fuse insert for overload and short-circuit protection (block arrangement)	3 W
Power loss $P_1$ max. short-circuit protection (individual arrangement)	3 W
Power loss $P_{loss}$ (max.) of fuse cartridge for short-circuit protection (block arrangement)	3 W

General information	
Voltage type 1	DC
Fuse receptacle	pivoting
Fuse type	Cylindrical fuse; 10/14 x 85 mm; for photovoltaic applications
Wiring direction	Side-entry wiring

## Connection Data

Clamping units	2
Total number of potentials	1
Number of levels	1

## Connection 1

Connection technology	CAGE CLAMP®
Actuation type	Lever
Connectable conductor materials	Copper
Solid conductor	2.5 ... 16 mm <sup>2</sup> / 14 ... 6 AWG
Stranded conductor	2.5 ... 16 mm <sup>2</sup> / 14 ... 6 AWG
Fine-stranded conductor	2.5 ... 16 mm <sup>2</sup> / 14 ... 6 AWG
Strip length	12 ... 13 mm / 0.47 ... 0.51 inches
Pole number	1
Wiring direction	Side-entry wiring

## Physical data

Width	22.3 mm / 0.878 inches
Height	154.9 mm / 6.098 inches
Depth from upper-edge of DIN-rail	66 mm / 2.598 inches

## Mechanical data

Design	horizontal type
Mounting type	DIN-35 rail
Mounting (note)	The fixed foot of the fuse terminal block must face upwards so that the fuse cannot fall out.
Protection type	IP20

## Material data

Note (material data)	<a href="#">Information on material specifications can be found here</a>
Color	light gray
Material group	I
Insulation material (main housing)	Polyamide (PA66)
Flammability class per UL94	V0
Fire load	0 MJ
Weight	78.9 g

## Environmental requirements

Processing temperature	-35 ... +85 °C
Continuous operating temperature	-40 ... +125 °C

## Commercial data

PU (SPU)	12 pcs
Packaging type	Box
Country of origin	CN
GTIN	4055144071092
Customs tariff number	85369095000

**Product Classification**

UNSPSC	39121624
ETIM 9.0	EC002705
ETIM 10.0	EC002705
ECCN	NO US CLASSIFICATION

**Environmental Product Compliance**

RoHS Compliance Status	Compliant, No Exemption
------------------------	-------------------------

**Approvals / Certificates**

**Declarations of conformity and manufacturer's declarations**

Approval	Standard	Certificate Name
EU-Declaration of Conformity WAGO GmbH & Co. KG	-	-

**Downloads**

**Environmental Product Compliance**

Compliance Search
Environmental Product Compliance 811-1316

**CAD/CAE-Data**

CAD data
2D/3D Models 811-1316

**1 Compatible Products**

**1.1 Optional Accessories**

**1.1.1 Ferrule**

**1.1.1.1 Ferrule**

<p><b>Item No.: 216-209</b>                      Ferrule; Sleeve for 10 mm<sup>2</sup> / AWG 8; insulated; electro-tin plated; red</p>	<p><b>Item No.: 216-109</b>                      Ferrule; Sleeve for 10 mm<sup>2</sup> / AWG 8; un-insulated; electro-tin plated</p>	<p><b>Item No.: 216-208</b>                      Ferrule; Sleeve for 6 mm<sup>2</sup> / AWG 10; insulated; electro-tin plated; electrolytic copper; gastight crimped; acc. to DIN 46228, Part 4/09.90; yellow</p>	<p><b>Item No.: 216-108</b>                      Ferrule; Sleeve for 6 mm<sup>2</sup> / AWG 10; un-insulated; electro-tin plated; silver-colored</p>
<p><b>Item No.: 216-545</b>                      Twin ferrule; Sleeve for 2 x 2.5 mm / AWG 14; insulated; blue</p>	<p><b>Item No.: 216-546</b>                      Twin ferrule; Sleeve for 2 x 4 mm / AWG 12; insulated; gray</p>	<p><b>Item No.: 216-547</b>                      Twin ferrule; Sleeve for 2 x 6 mm / AWG 10; insulated; yellow</p>	

### 1.1.2 Marking

#### 1.1.2.1 Label



**Item No.: 210-805**

Labels; for Smart Printer; permanent adhesive; 6 x 15 mm; 3000 pieces on roll; white



**Item No.: 210-805/000-002**

Labels; for Smart Printer; permanent adhesive; 6 x 15 mm; 3000 pieces on roll; yellow



**Item No.: 210-806**

Labels; for Smart Printer; permanent adhesive; 9 x 15 mm; 3000 pieces on roll; white



**Item No.: 210-806/000-002**

Labels; for Smart Printer; permanent adhesive; 9 x 15 mm; 3000 pieces on roll; yellow



**Item No.: 210-705**

Labels; for TP printers; permanent adhesive; 6 x 15 mm; 3000 pieces on roll; white



**Item No.: 210-705/000-002**

Labels; for TP printers; permanent adhesive; 6 x 15 mm; 3000 pieces on roll; yellow



**Item No.: 210-706**

Labels; for TP printers; permanent adhesive; 9 x 15 mm; 3000 pieces on roll; white



**Item No.: 210-706/000-002**

Labels; for TP printers; permanent adhesive; 9 x 15 mm; 3000 pieces on roll; yellow

### 1.1.3 Test and measurement

#### 1.1.3.1 Testing accessories



**Item No.: 206-912**

WAGO Test Probes; 2 mm Ø; 1000 V; CAT IV; 10 A

## Installation Notes

### Installation

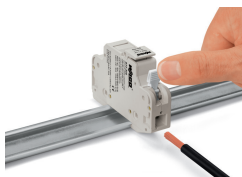


Removing a terminal block from the DIN-rail.

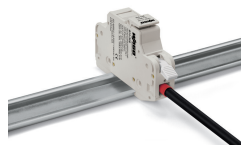
### Conductor termination



Open and close lever via operating tool.



**CAGE CLAMP® connection**  
Inserting a conductor.  
Opening the clamping unit via integrated lever.



Terminating ferruled conductors up to 10 mm<sup>2</sup> (8 AWG).



Inserting a fuse.