

SpaceLogic Thermostat

TC900 Series for Standalone Fan Coil Applications

TC903-3A2P-24,TC903-3A2L,TC903-EF4PDXSA,TC903-3A4LA,TC903-3A4DPSA,TC903-3A4DLSA,TC907-3A2LB,TC907-3A2P-24B,TC907-3A4LAB,TC907-3A4DLSAB,TC907-EF4PDXSAB,TC907-3A4DPSAB,TC907-EF4PDXSA,TC907-3A2P-24,TC907-3A2L,TC907-3A4LA,TC907-3A4DPSA,TC907-3A4DLSA



Product Description

The TC900 Series fan coil thermostats are optimized for office building, hotel, hospital and residential applications.

The TC900 Series can be used for 2-pipe or 4-pipe applications.

Specifications

Built-in sensing element	100 kΩ NTC, type 3
Accuracy	±1 °C
Set-point range	5 to 35 °C
Display range	0 to 50 °C (shown in 0.5 °C increments)
Operating temp.	0 to 50 °C
Operating humidity	5 to 95 %RH (non-condensing)
Power consumption	< 1.7 W
Power supply	90 to 240 Vac, 50/60Hz 24 Vac (models with suffix '-24')
Relay & load	Relay rating 5A Load rating 2A resistive, 1A inductive
Protection class	IP20
Housing	Flame-retardant PC

Dimensions	86 x 86 x 14.5 mm (3.40" x 3.40" x 0.57")
Wall box	BS wall box, min. 35 mm depth
Hole pitch	60 mm (standard)
Control pollution degree	Pollution Degree 2
Operation type	Type 1.B
Terminal sizing	Max: 2 x 1.5 mm² or 1 x 2.5 mm² conductors
Terminal torque*	Max: 0.44N.m
Agency approvals	European conformance CE: IEC/EN 60730-1 IEC/EN 60730-2-9 EU RoHS/REACH UKCA (UK) RCM (Australia)

*Exceeding the maximum torque when tightening the terminal screw may lead to cracked plastic.

USA: +1 888-444-1311
Europe: +46 10 478 2000
Asia: +65 6484 7877
www.schneider-electric.com

Schneider
Electric

Precautions

⚠ ⚠ DANGER

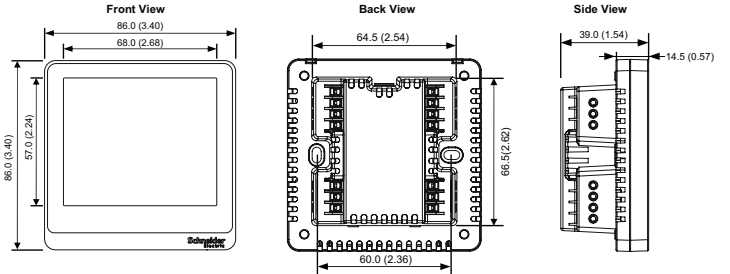
HAZARD OF ELECTRIC SHOCK, EXPLOSION, OR ARC FLASH

- Follow safe electrical work practices. See NFPA 70E in the USA, CSA Z462 in Canada, or applicable local codes.
- Read and understand the instructions before installing the product. Follow the instructions during installation.
- Installation, wiring, testing or service must be performed only by qualified persons in accordance with all applicable codes and regulations.
- Do not use the product for life or safety applications.
- Do not install the product in hazardous or classified locations.
- Do not exceed the product's ratings or maximum limits.
- The product may use multiple voltage/power sources.
- Turn off ALL power supplying equipment before working on or inside the equipment.
- Use a properly rated voltage sensing device to confirm that all power is off.
- Do NOT depend on the product for voltage indication.
- Products rated only for basic insulation must be installed on insulated conductors.
- Current transformer secondaries (current mode) must be shorted or connected to a burden at all times.
- Remove all wire scraps and tools, replace all doors, covers and protective devices before powering the equipment.

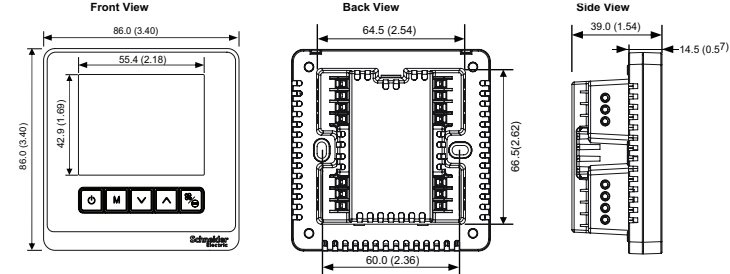
Failure to follow these instructions will result in death or serious injury.

Dimensions mm (in.)

TC907 Series



TC903 Series



Functions

Set-point Adjustment

The set-point buttons allow users to adjust the set-point (in 0.5 °C increments) for the space.

Fan Speed

Users can select a fan speed (High, Medium, Low or Automatic) by a short press of the FAN/ECO button (TC903) or the FAN button (TC907).

Mode Control

Users can switch operating modes (Heating, Cooling, or Ventilation) by pressing the Mode button.

Eco Mode

To begin Eco mode, do a short press of the FAN/ECO button (TC903) or the ECO button (TC907) until the ECO icon appears in the lower right corner of the LCD display. In Cooling mode, the set-point is automatically adjusted to 26°C and the fan speed is set to Low. In Heating mode, the set-point is automatically adjusted to 18 °C and the fan speed is set to Low. To exit Eco mode, do a short press of the FAN/ECO button (TC903) to choose any other fan speed, as desired, or do a short press of the ECO button (TC907) to cancel Eco mode.

Button Lockout Function

This function allows the buttons to be deactivated to prevent thermostat operation by others.

Low Temperature Protection

If the room temperature drops below 5 °C, Heating mode will start automatically and the fan speed will be set to High. Once the temperature reaches 7 °C, the thermostat will switch off the output.

Alert

In the event of an operating exception, the thermostat will attempt to command the valve to close and place the device in an inoperative state. The display will indicate the current status with one of five diagnostic messages:

- EEPROM: 'EE'
- Temperature sensor short-circuit: 'E1'
- Temperature sensor open-circuit: 'E2'
- Ambient temperature is higher than 50°C: 'HI'
- Ambient temperature is lower than 0°C: 'LO'

Remote Sensor/Key Card

This user-defined parameter selects whether input terminals are utilized for a remote temperature sensor and occupancy key card (except for 24V

models which only support one, but not both simultaneously). Note: This function is only available on models with an 'S' in the model number: 'DPSA', 'DPSMA', etc.

Installation Guidelines

- Install the thermostat about 1.5 m (59") above the floor
- Make sure the device is powered off prior to installation/service
- Do not install in locations that can be affected by radiant heat or in places with high levels of sunlight
- Do not install thermostats behind doors or in corners
- Protect from water/debris to avoid damaging the thermostat

Operation Instructions

Power On/Off

A short/long press of the ON/OFF button will turn the power on. Another short/long press of the ON/OFF button will turn off the power, fan coil and motorized valve. If no buttons are pressed for 10 seconds, the thermostat backlight turns off. Press any button to turn the backlight back on.

Temperature Setting

With the power on, press to decrease the temperature setting and to increase temperature in steps of 0.5°C. The will appear on the display. If no buttons are pressed for six seconds, is displayed, indicating the setpoint is confirmed.

Mode Selection

With the power on, press M to switch the operation mode. The display indicates cooling with , heating with and ventilation with . Auto mode can be selected in the parameter settings and is indicated on the display with .

Fan Speed Selection

With the power on, press on TC903 or on TC907 to select a fan wind/air speed of high , medium , low or automatic . In automatic mode, the fan speed changes automatically. For a difference of 1 °C, the fan will automatically switch to low fan speed. For a difference of 2 °C, the fan will automatically switch to medium fan speed. For a difference of 3 °C or more, the fan will automatically switch to high wind speed.

Modulating Valve Control (2-Pipe Models)

In Cooling (Heating) mode, when the room temperature is higher than (lower than) the temperature

setting by 1 °C, the modulating control valve opens according to the 0 to 10 Vdc analog output control signal. When room temperature reaches or is lower than (higher than) the temperature setting, the modulating control valve closes, according to the 0 to 10 Vdc analog output control signal.

Modulating Valve Control (4-Pipe Models)

In Cooling mode, when the room temperature is higher than the temperature setting by 1°C, the modulating cooling control valve opens according to the 0 to 10 Vdc analog output control signal. When room temperature is less than or equal to the temperature setting, the modulating cooling control valve closes according to the 0 to 10 Vdc analog output control signal. The modulating heating control valve remains closed.

In Heating mode, when the room temperature is lower than the temperature setting by 1 °C, the modulating heating control valve opens according to the 0 to 10 Vdc analog output control signal. When room temperature is greater than or equal to the room temperature setting, the modulating heating control valve closes according to the 0 to 10 Vdc analog output control signal. The modulating cooling control valve remains closed.

Energy Saving Functions

Energy Saving Mode

Press the FAN/ECO button on TC903 or the ECO button on TC907 to turn on Eco mode. The display will show the and icons. If the thermostat is in Cooling mode, the temperature is automatically set to 26 °C with the fan running at low speed. If the thermostat is in Heating mode, the temperature is automatically set to 18 °C with the fan running at low speed. To turn Eco mode off, press the up or down buttons to change the temperature setting or press the FAN/ECO or ECO buttons.

Unoccupied Energy Saving Mode

Unoccupied Energy Saving mode can be entered via a hotel room key card or bioprobe. Example: after a hotel room key card is removed from the reader and are displayed. If the thermostat is in cooling mode, the temperature is automatically set to 28 °C with the fan running at low speed. If the thermostat is in heating mode, the temperature is automatically set to 16 °C with the fan running at low speed. When the key card is returned to the reader, the indoor display and ECO icon turn off and the thermostat returns to the previously set mode.

A qualified person is one who has skills and knowledge related to the construction and operation of this electrical equipment and installations, and has received safety training to recognize and avoid the hazards involved.

If this product is used in a manner not specified by the manufacturer, the protection provided by the product may be impaired. No responsibility is assumed by Schneider Electric for any consequences arising out of the use of this material.

External housing may be cleaned with a damp cloth if it becomes dirty. Do not use any cleaning agent, especially alcohol.

Sleep Energy Saving Mode

At 12:00 a.m., Sleep Energy Saving mode turns on and **Override** displays at 1:00 a.m. The temperature setpoint increases or decreases automatically every hour by 1 °C until 3:00 a.m. Example: if the thermostat is in cooling mode, the setpoint will increase 1 °C per hour until 3:00 a.m. then decreases 1 °C per hour until the original setpoint is reached at 7:00 a.m. and **Override** turns off. If the thermostat is in heating mode, the setpoint will decrease 1°C per hour until 3:00 a.m. and then increases 1°C per hour until the original setpoint is reached at 7:00 a.m. and **Override** turns off. The cooling setpoint will not rise above 26°C and the heating setpoint will not drop below 18°C in Sleep Energy Saving mode.

Time Setting Function

During power-on, press and hold M for six seconds to enter the Time Setting mode. Press the mode M button again to select the hour, minute and week. Press the up and down buttons to adjust this parameter. Time Setting mode is exited automatically if no button is pushed for six seconds.

Button Lockout Function

Press and hold the up and down buttons at the same time for six seconds to activate the keypad lockup function to prevent thermostat operation by others. While lockout is active, the lock icon will be displayed on the screen. To deactivate the lockout function, press and hold the up and down buttons at the same time for six seconds to unlock the system.


Low Temperature Protection Function

If the thermostat is switched off and the room temperature drops below 5 °C, the thermostat will start automatically for heating and display the symbol. The fan will run at high speed automatically and the motorized valve will be opened (hot water valve will be opened for 4-pipe models). When the room temperature rises to 7 °C, the low temperature protection function is canceled and the thermostat will stop automatically, returning to its previously switched off state.

Alert Function

In the event of an operating exception with the temperature sensor (either built-in or external, depending on which is selected), the thermostat will attempt to command the fan and valve to close,

Energy Saving Functions (cont.)

place the device in an inoperative state and display the  icon and an 'E1' or 'E2' alert.



- E1: Sensor short-circuit alert
- E2: Sensor open-circuit alert

'Hi' will be displayed if the temperature is higher than 50 °C. 'Lo' will be displayed if the temperature is lower than 0 °C.

Parameter Settings Table

Number	Parameter	Default	Description
01	Low temperature protection	On	OF: Disabled, On: Enabled
02	Fan operation status after temperature setting is reached	DA	Db: Fan off, DA: Fan on
03	Power-on state	00	00: Power-down memory, 01: power-down do not remember, 02: power-up power-on
04	Differential	1°C	1~3°C
05	ECO mode differential	2°C	1~5°C
06	Heating set-point upper limit	35°C	5 to 35°C
07	Cooling set-point lower limit	5°C	5 to 35°C
08	Auto deadband	1°C	1 to 3°C (only for 4-pipe Auto mode)
09	Mode button selection (2-pipe)	02	00: Heating only (heating, ventilation), 01: Cooling only (cooling, ventilation), 02: Heating and cooling (heating, cooling, ventilation)
	Mode button selection (4-pipe)	02	00: Heating only (heating, ventilation), 01: Cooling only (cooling, ventilation), 02: Heating and cooling (heating, cooling, ventilation), 03: Auto, 04: 2-pipe mode*
10	Auto fan setting	On	OF: Fan Auto disabled - Fan mode setting can be High, Medium or Low, On: Fan Auto enabled - Fan mode setting can be High, Medium, Low or Auto. No Fan Auto in Ventilation mode.
11	Show temperature selection	00	00: Room temperature, 01: Set-point
16	Clock display	On	OF: Disabled, On: Enabled
17	12/24 hour clock	24	12: 12-hour clock, 24: 24-hour clock
18	Sleep Energy Saving mode	On	OF: Disabled, On: Enabled
19	Cooling temperature, Unoccupied Energy Saving mode	28°C	22 to 32°C
20	Heating temperature, Unoccupied Energy Saving mode	16°C	10 to 21°C
21	Fan speed, Unoccupied Energy Saving mode	02	00: High speed, 01: Medium speed, 02: Low speed
22	Temperature sensor selection	00	00: Built-in, 01: External
23	Low-speed fan output voltage	3.3V	Range: 0V to medium-speed setting
24	Medium-speed fan output voltage	6.6V	Range: Low-speed setting to high-speed setting
25	High-speed fan output voltage	10V	Range: Medium-speed setting to 10V
26	External temp sensor/key card switch selection	00	00: External temp sensor 01: Key card switch
27	Backlight standby brightness	05	00 = 0% brightness to 05 = 5% brightness

Parameter Settings

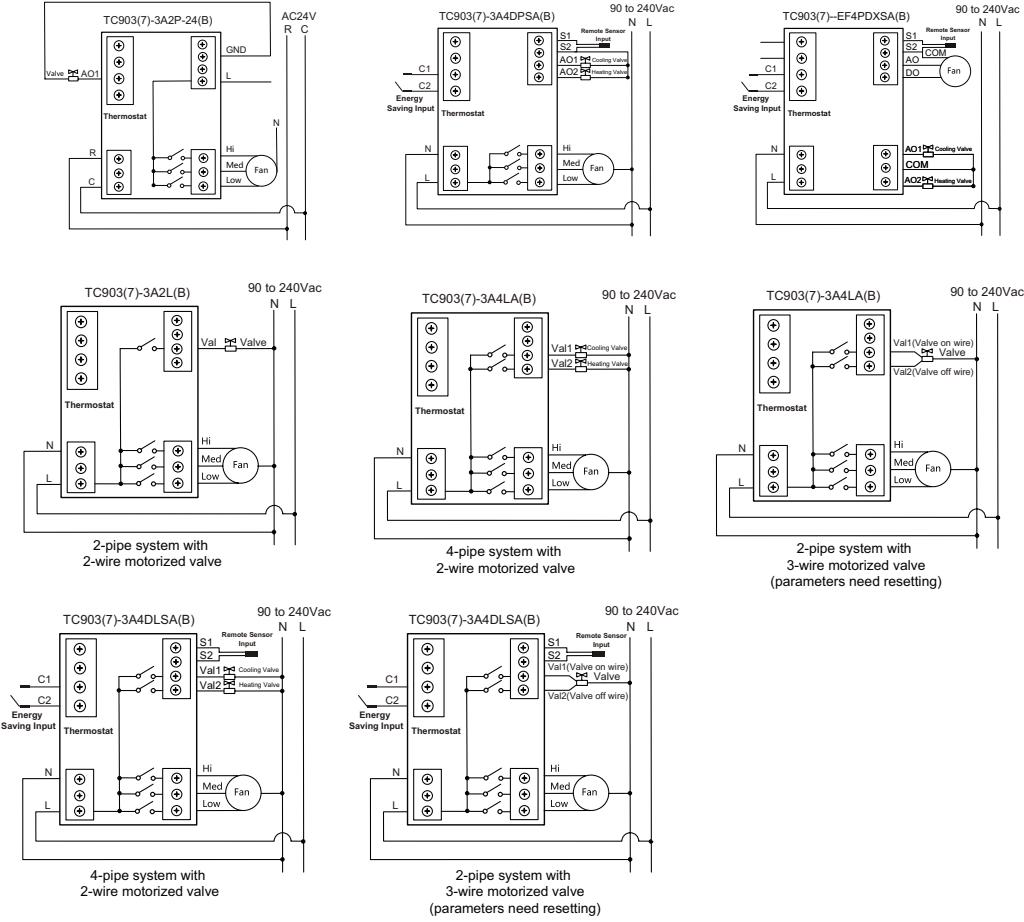
During power off, press and hold the mode button **M** for six seconds to enter the display screen. Press the mode button **M** or Fan button to move forward or backward between the parameters shown in the table below. Press the up  and down  buttons to adjust these parameters.

Parameter Settings Table (cont.)

Notes:
Parameters 01 to 11 apply to all models.
Parameters 16 to 22 only apply to models with 'S' in the part number (real-time clock and external sensors connection).
Parameters 23 to 25 only apply to models with 'F' in the part number (DC brushless fan).
Parameter 26 only applies to models with '-24' in the part number (24 V models).
Parameter 27 only applies to TC907 models.
For models without one of the specific functions mentioned above, skip the parameters entirely.
This parameter table must be set by specialized installation personnel authorized by Schneider Electric. Any inconvenience or damage caused by unauthorized operation will not be covered by warranty.
*For a 2-pipe system with a 3-wire motorized valve, the thermostat supports either Heating Mode or Cooling Mode, but not both simultaneously.

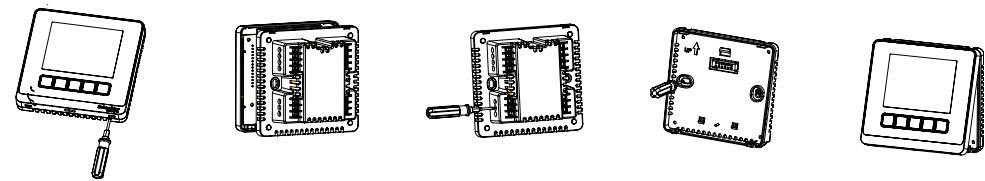
Wiring

Provide an approved disconnecting means and overcurrent protection to supply conductors. The disconnecting device(s) shall meet the relevant requirements of IEC 60947-1 and IEC 60947-3 and shall be suitable for the application. Locate and mark per local requirements.

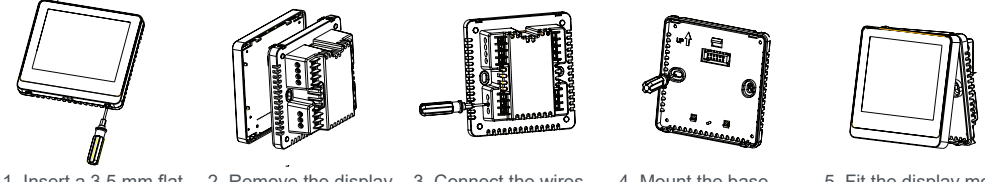


Mounting

TC903 Series



TC907 Series



1. Insert a 3.5 mm flat head screwdriver along the bevel into the slot.
2. Remove the display from the base module. Pry upwards with appropriate force to release the two hooks.
3. Connect the wires according to the appropriate wiring diagram shown above. Ensure the polarity of the mains supply is correct.
4. Mount the base module onto the wall box using the two screws supplied.
5. Fit the display module onto the base module. Align upper hooks between the two modules. Carefully replace the wiring connection if it has been removed. Click display module onto base module using the two lower hooks.