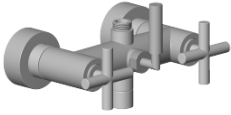
















**Connection for bath wall-mounting 200 x 215 x 140 mm - Brushed Light Gold (PVD)**

SPARE PARTS

04 17 10 020 01 Product version from 4/1/2025



	Brushed Light Gold (PVD)	04 17 10 020 01-27
	Chrome	04 17 10 020 01-00
	Brushed Platinum	04 17 10 020 01-06
	Platinum	04 17 10 020 01-08
	Matte White	04 17 10 020 01-10
	Dark Chrome	04 17 10 020 01-19
	Brushed Durabronze (23kt Gold)	04 17 10 020 01-28
	Matte Black	04 17 10 020 01-33
	Brushed Dark Brass (PVD)	04 17 10 020 01-39
	Brushed Bronze (PVD)	04 17 10 020 01-42
	Brushed Champagne (22kt Gold)	04 17 10 020 01-46
	Champagne (22kt Gold)	04 17 10 020 01-47
	Brushed Chrome	04 17 10 020 01-93
	Brushed Dark Platinum	04 17 10 020 01-99



Connection for bath wall-mounting 200 x 215 x 140 mm - Brushed Light Gold  
(PVD)

---

SPARE PARTS

04 17 10 020 01 Product version from 4/1/2025



Connection for bath wall-mounting 200 x 215 x 140 mm - Brushed Light Gold  
(PVD)

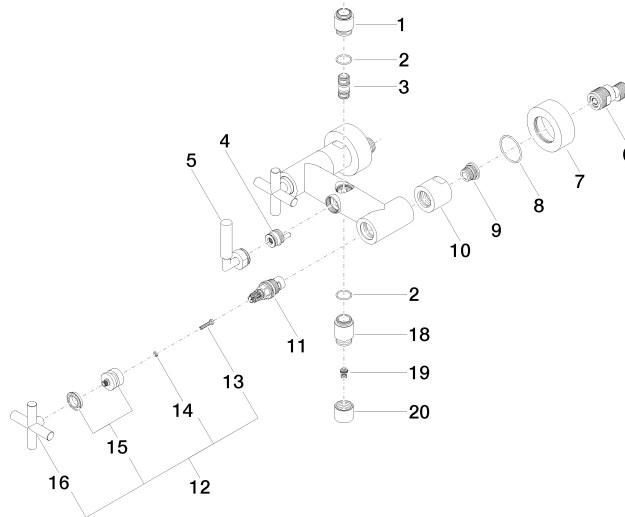
---

SPARE PARTS

04 17 10 020 01 Product version from 4/1/2025

04 17 10 020 01 Product version from 4/1/2025

Parts for other finishes can be found here: [Chrome](#)



### Spare parts list

No.	Item Number	Name	Quantity used	Delivery time
	18 09 23 01 131 90	Back-flow preventer without limitation Ø 10 x 10,5 mm -	1.00	14
	7 09 27 89 103-27	Rosette Ø 65 x 25 mm - Brushed Light Gold (PVD)	2.00	82
	15 90 12 12 007 00-27	Handle Socket retainer Ø 29 x 26 mm - Brushed Light Gold (PVD)	2.00	40
	11 90 90 03 131 00 90	Head part clockwise closing 1/2" -	2.00	14
	9 04 29 05 014 00 90	Connection M18 x 1,5 -	2.00	14
	10 09 23 10 064-27	Mounting Ø 38 x 34 mm - Brushed Light Gold (PVD)	2.00	82
	16 09 20 89 010-27	Handle 70 x 70 x 22,5 mm - Brushed Light Gold (PVD)	2.00	40
	17 09 24 03 121-27	Nipple Ø 24,7 x 34,5 mm - Brushed Light Gold (PVD)	1.00	82
	19 09 21 02 143-27	Cover Ø 24,7 x 20 mm - Brushed Light Gold (PVD)	1.00	82
	13 90 30 30 075 00 90	Mounting Cylinder head screw with hexagon socket Low profile M4 x 20 mm -	2.00	14
	8 09 14 10 034 90	O-Ring EPDM 70 38,0 x 2,0 mm -	2.00	14
	4 90 15 01 005 00 90	Diverter Insert Strainer waste 20 x 30 x 20 mm -	1.00	14
	5 90 18 20 025 00-27	Diverter 23 x 85 x 48 mm - Brushed Light Gold (PVD)	1.00	40
	14 90 30 11 029 00 90	Connection Spring lock washer Ø 4 -	2.00	14
	12 90 20 89 010 10-27	Handle TARA - Brushed Light Gold (PVD)	2.00	40
	2 90 14 10 032 00 90	O-Ring 18,1 x 1,6 mm -	2.00	14
	6 04 11 04 030 00 90	S-connection with sound damper and seal 1 pair G1/2 x G3/4 -	2.00	14
	3 90 21 10 011 00 90	Diverter TARA incl. eccentric -	1.00	14
	1 09 24 03 090 20-27	Nipple Ø 25 x 32,5 mm - Brushed Light Gold (PVD)	1.00	82