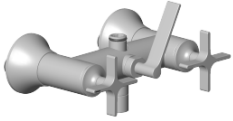


Connection for bath wall-mounting 222 x 144 x 134 mm - Brushed Light Gold (PVD)

SPARE PARTS

04 17 10 020 03



	Brushed Light Gold (PVD)	04 17 10 020 03-27
	Chrome	04 17 10 020 03-00
	Brushed Platinum	04 17 10 020 03-06
	Platinum	04 17 10 020 03-08
	Brushed Durabronze (23kt Gold)	04 17 10 020 03-28
	Brushed Champagne (22kt Gold)	04 17 10 020 03-46
	Champagne (22kt Gold)	04 17 10 020 03-47
	Brushed Dark Platinum	04 17 10 020 03-99



Connection for bath wall-mounting 222 x 144 x 134 mm - Brushed Light Gold
(PVD)

SPARE PARTS

04 17 10 020 03

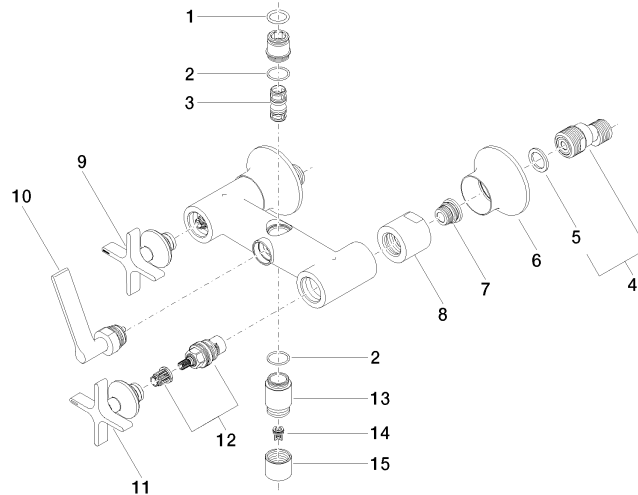


Connection for bath wall-mounting 222 x 144 x 134 mm - Brushed Light Gold
(PVD)

SPARE PARTS

04 17 10 020 03

04 17 10 020 03
Parts for other finishes can be found here: Chrome



Spare parts list

No.	Item Number	Name	Quantity used	Delivery time	
	12	90 90 03 131 00 90	Head part clockwise closing 1/2" -	2.00	14
	2	90 14 10 032 00 90	O-Ring 18,1 x 1,6 mm -	2.00	14
	6	90 27 80 018 00-27	Rosette Ø 78 x 36 mm - Brushed Light Gold (PVD)	2.00	40
	4	04 11 04 030 00 90	S-connection with sound damper and seal 1 pair G1/2 x G3/4 -	2.00	14
	7	04 29 05 014 00 90	Connection M18 x 1,5 -	2.00	14
	3	90 21 10 011 00 90	Diverter TARA incl. eccentric -	1.00	14
	13	09 24 03 121-27	Nipple Ø 24,7 x 34,5 mm - Brushed Light Gold (PVD)	1.00	82
	15	09 21 02 143-27	Cover Ø 24,7 x 20 mm - Brushed Light Gold (PVD)	1.00	82
	9	90 20 80 011 01-27	Handle for spray/bath deck mounting Hot Ø 71 x 63 mm - Brushed Light Gold (PVD)	1.00	40
	8	09 23 10 064-27	Mounting Ø 38 x 34 mm - Brushed Light Gold (PVD)	2.00	82
	10	90 20 80 015 02-27	Diverter Handle 135 x 130 x 80 mm - Brushed Light Gold (PVD)	1.00	40
	11	90 20 80 010 01-27	Handle for spray/bath wall mounting Cold Ø 71 x 63 mm - Brushed Light Gold (PVD)	1.00	40
	5	09 14 20 010 90	Washer Vf 3110 24,0 x 17,0 x 2,0 mm -	2.00	14
	1	09 14 10 022 90	O-Ring EPDM 70 16,0 x 2,5 mm -	1.00	14
	14	09 23 01 131 90	Back-flow preventer without limitation Ø 10 x 10,5 mm -	1.00	14