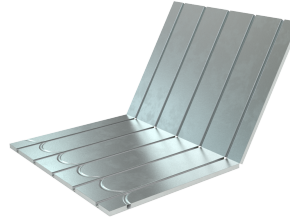


## UFH-DRY-1625-150F: SECOR PANEL 1625, c150 - 25mm



### Kommerzielle Informationen

**HENCO SECOR** is a dry system with a very low construction height. The absence of a screed ensures a quick installation and low thermal inertia. The panels already have an aluminium layer for optimum heat emission. Henco Secor is installed with Henco multilayer pipes and is only laid in a meandering pattern.

The floor finish can be applied immediately after installation of the underfloor heating, making the system the ideal solution for renovations.

#### The main advantages of

##### **HENCO SECOR** are:

- Very low construction height
- Low thermal inertia
- Short drying time (no screed)
- Floor finish can be applied immediately
- Very light weight
- Suited for renovations

#### **Zertifikate**

#### **Anwendungen**

Heizung, Kühlung, Fußbodenheizung

#### **Lösungen**

Fußbodenheizung, Gebäudeinstallation, Industrie, Tiefbau

## Technische Eigenschaften

Werkstoff	Kunststoff	Rastermaß	0 Millimeter
Oberflächenschutz	unbehandelt	Länge	1175 Millimeter
		Breite	750 Millimeter
		Stärke	25 Millimeter

## Verwandte Produkte