

**MADISON Metal hand shower with porcelain insert (white) FlowReduce -
Brushed Dark Platinum**

MADISON

28 002 970 Product version from 4/1/2025



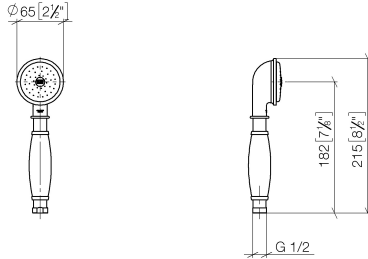
- spray head Ø 64mm
- COMPACT RAIN, max. flow rate 6.8 l/min (at 3 bar)
- Function from: 6 l/min
- 1/2" connection
- inherently safe from back flow
- with anti-scale system

Notes:

- This product can help a building meet the requirements of Green Building Rating Systems, e.g. LEED®, BREEAM®, DGNB

	Brushed Dark Platinum	28 002 970-99 0010
	Chrome	28 002 970-00 0010
	Brushed Platinum	28 002 970-06 0010
	Platinum	28 002 970-08 0010
	Durabrass (23kt Gold)	28 002 970-09 0010
	Brushed Durabrass (23kt Gold)	28 002 970-28 0010
	Brushed Gold (PVD)	28 002 970-37 0010
	Brushed Dark Brass (PVD)	28 002 970-39 0010
	Brushed Bronze (PVD)	28 002 970-42 0010
	Brushed Chrome	28 002 970-93 0010

28 002 970 Product version from 4/1/2025
mm [inches]



Codes & Standards

ASME A112.18.1 cUPC DIN 4109 EPA WaterSense

ISO 3822 Ü-Zeichen WaterSense



Certificates and sustainability

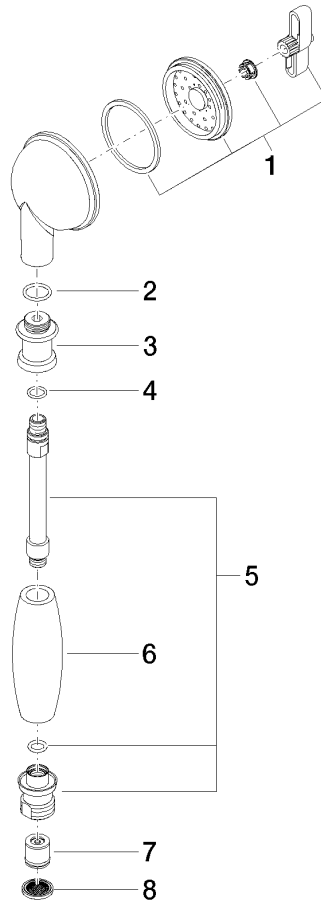
IAPMO_11777 LGA_8 IAPMO_4976 (

**MADISON Metal hand shower with porcelain insert (white) FlowReduce -
Brushed Dark Platinum**

MADISON

28 002 970 Product version from 4/1/2025

Parts for other
finishes can be found
here: [Chrome](#)



Spare parts list

No.	Item Number	Name	Quantity used	Delivery time
2	09 14 10 069 90	O-Ring EPDM 70 14,0 x 1,78 mm -	1.00	14
4	09 14 10 042 90	O-Ring EPDM 70 9,0 x 1,5 mm -	1.00	14
7	09 23 01 166 90	Back-flow preventer 7 l/min. -	1.00	14
1	90 12 01 010 00 90	Insert Spray filter, body spray 70 x 110 x 20 mm -	1.00	14
5	90 28 22 033 00-99	Connection Ø 24 x 129 mm - Brushed Dark Platinum	1.00	40
6	11 167 820 60	Handle -	1.00	14
3	09 24 04 059 20-99	Nipple Ø 26 x 23,5 mm - Brushed Dark Platinum	1.00	40
8	09 23 01 039 90	Sieve seal Ø 19 x 5,5 mm -	1.00	14