

# SPIROTECH SPECIFICATION SHEET



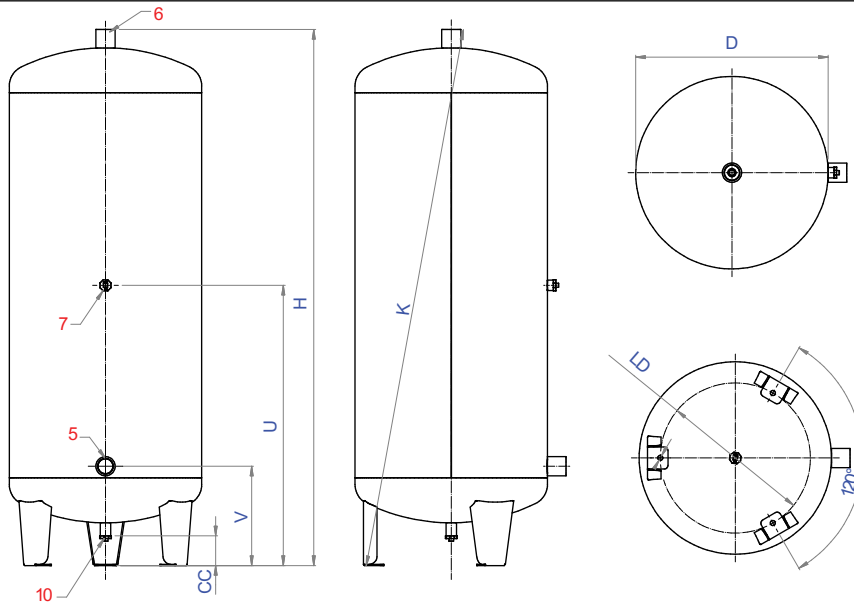
**ET 100 litre, 10 bar**

Customer:

Project:

Reference:

**Type: ET0100T1**



## Design criteria

Medium:	Water / glycol (max 40%)
Max. pressure:	10.0 bar-g
Max. temperature:	110 °C
Design standard:	Factory standard

## Testing and quality assurance

Leakage test:	yes
Test certificate:	no
Design and manufacturing acc. 97/23/EC:	yes
Material certificates:	no
Drawing:	no

## Construction materials

Body:	S235 (St.37)
Paint:	Standard
Color:	Yellow (RAL 1003)

## Dimensions

Height:	1337 mm
Width:	350 mm
Depth:	350 mm
CC	93 mm
D	350 mm
H	1337 mm
K (tip dimension)	1347 mm
LD	240 mm
U	622 mm
V	251 mm
Weight	50 kg

## Connections

5. suction pipe	Rp 1
6. overflow pipe	Rp 1
7.	Rp 1/2
10.	Rp 1/2

Subject to changes