

**TARA Wall valve clockwise closing 1/2" - Brushed Platinum**

TARA

36 607 892 Product version up to 10/27/2020

- rosette Ø 55 mm
- head part with cut-to-length spindle and sleeve
- WRAS



	Brushed Platinum	36 607 892-06
	Chrome	36 607 892-00
	Platinum	36 607 892-08
	Dark Chrome	36 607 892-19
	Brushed Durabrass (23kt Gold)	36 607 892-28
	Matte Black	36 607 892-33
	Brushed Dark Brass (PVD)	36 607 892-39
	Brushed Bronze (PVD)	36 607 892-42
	Brushed Dark Bronze (PVD)	36 607 892-43
	Brushed Champagne (22kt Gold)	36 607 892-46
	Champagne (22kt Gold)	36 607 892-47
	Brushed Chrome	36 607 892-93
	Brushed Dark Platinum	36 607 892-99

**Required miscellaneous**

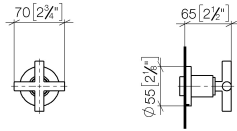
**Wall valve 1/2" -** 35 607 970 90



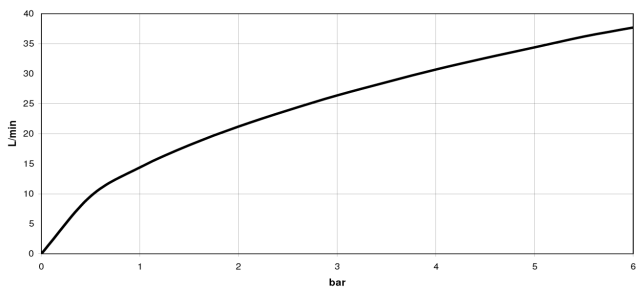
- min. recess depth 85 mm
- max. recess depth 145 mm

36 607 892 Product version up to 10/27/2020

mm [inches]



Flow rate chart



Codes & Standards

ASME A112.18.1	cUPC	DIN 4109	EN 1111
EN 200	ISO 3822	Scottish Water Byelaws	UK Water Supply Regulations

Ü-Zeichen



## TARA Wall valve clockwise closing 1/2" - Brushed Platinum

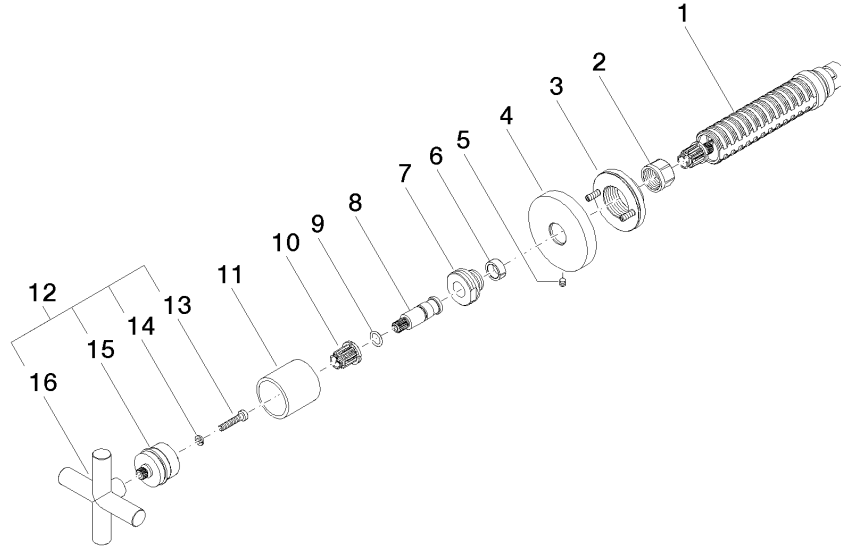
TARA

36 607 892 Product version up to 10/27/2020

### Certificates and sustainability

---

WRAS_2011	DVGW_DW- 6501DN0	DVGW_DW- 6512DN0	LGA_29	WRAS_2010
LGA_29	IAPMO_4976 (	EPD-DOR-20230287 -IBA1-EN Environmental.prod uct-declarat		



### Spare parts list

No.	Item Number	Name	Quantity used	Delivery time
	10 90 12 12 002 00 90	Fixing cap white Ø 15 x 12 mm -	1.00	14
	6 90 14 15 020 03 90	Support ring -	1.00	14
	11 09 21 02 144-06	Cover Ø 30 x 30 mm - Brushed Platinum	1.00	20
	13 90 30 30 075 00 90	Mounting Cylinder head screw with hexagon socket Low profile M4 x 20 mm -	1.00	14
	9 90 14 10 060 00 90	O-Ring 8,0 x 1,5 mm -	1.00	14
	14 90 30 11 029 00 90	Connection Spring lock washer Ø 4 -	1.00	14
	12 90 20 89 010 10-06	Handle TARA - Brushed Platinum	1.00	20
	16 09 20 89 010-06	Handle 70 x 70 x 22,5 mm - Brushed Platinum	1.00	-
	Spare part can no longer be ordered, please order the replacement item			
	90208901010-06	Handle TARA - Brushed Platinum		
	2 90 23 30 023 00 90	Cap nut -	1.00	14
	4 09 27 89 108-06	Rosette Ø 55 x Ø 15,1 x 9 mm - Brushed Platinum	1.00	20
	5 90 31 11 007 00 90	Mounting Threaded pin with hexagon socket M4 x 6 mm -	1.00	14
	8 09 29 06 022 90	Connection Ø 11 x 38,5 mm -	1.00	14
	15 90 12 12 007 00-06	Handle Socket retainer Ø 29 x 26 mm - Brushed Platinum	1.00	20
	3 90 21 02 108 00 90	Wall disc complete -	1.00	14
	7 09 24 05 002 90	Nipple Ø 24 x 16 mm -	1.00	14
	1 90 90 03 143 00 90	Head part clockwise closing 1/2" -	1.00	14