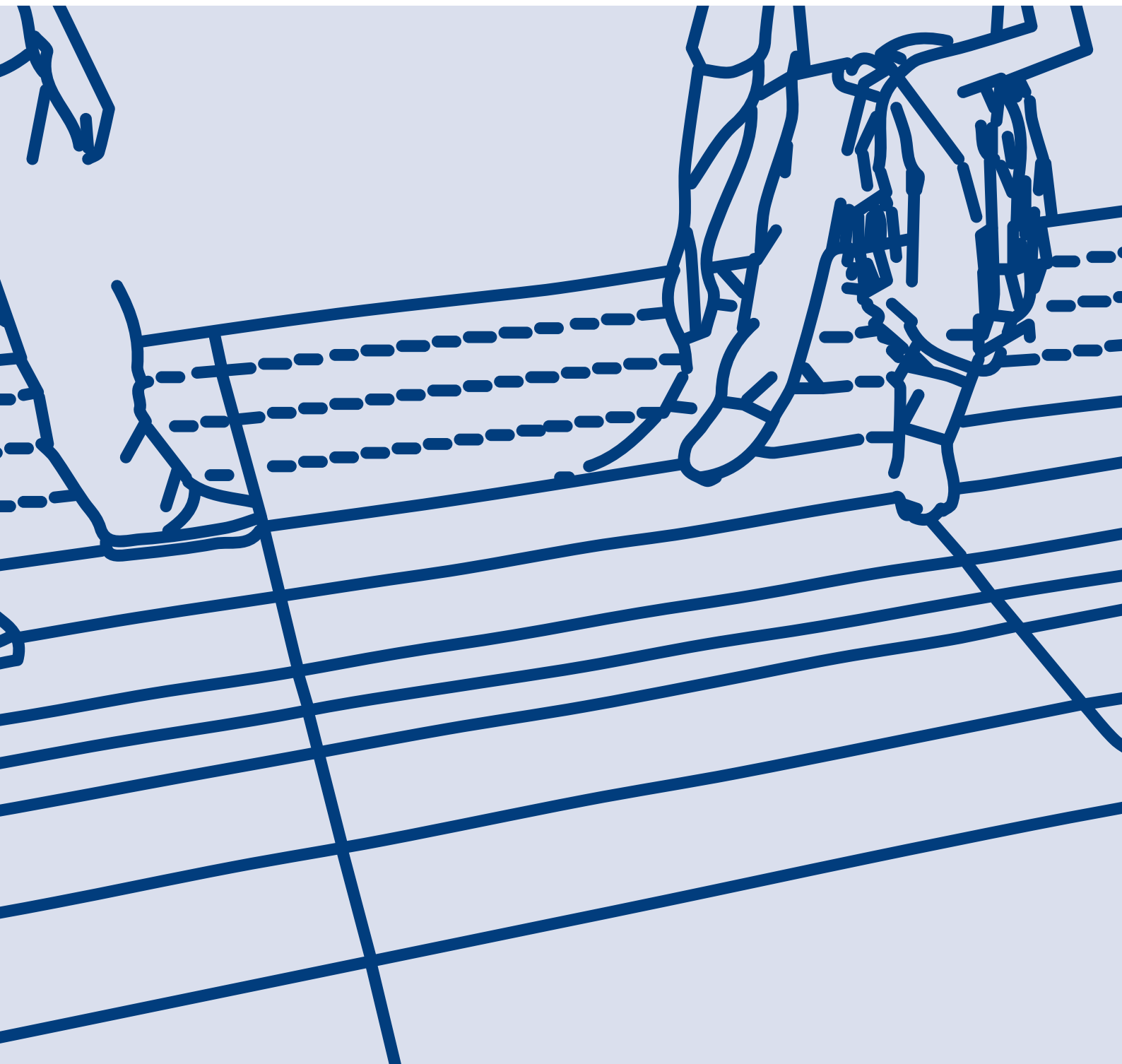




**HENCO FLOOR**

# **HENCO SECOR**

INSTALLATION MANUAL



WE **CARE** TO **CONNECT**

# INTRODUCTION

**HENCO SECOR** is a dry system with a very low construction height. The absence of a screed ensures a quick installation and low thermal inertia. The panels already have an aluminium layer for optimum heat emission. Henco Secor is installed with Henco multilayer pipes and is only laid in a meandering pattern.

The floor finish can be applied immediately after installation of the underfloor heating, making the system the ideal solution for renovations.

## The main advantages of HENCO SECOR are:

- ▶ Very low construction height
- ▶ Low thermal inertia
- ▶ Short drying time (no screed)
- ▶ Floor finish can be applied immediately
- ▶ Very light weight
- ▶ Suited for renovations

Henco Secor panels are available in insulation thicknesses of 17 mm, 25 mm and 30 mm.

### MINIMUM CONSTRUCTION HEIGHTS:

#### Dry rooms:

Construction height from load-bearing floor to floor finish with 16 mm pipe and Secor 17: 25 mm

Construction height from load-bearing floor to floor finish with 16 mm pipe and Secor 25: 33 mm

Construction height from load-bearing floor to floor finish with 16 mm pipe and Secor 30: 38 mm

Article no.	Dimension (w×l×h)	R-value	Description
UFH-DRY-1617-150F	750x1175x17	0,265 m <sup>2</sup> K/W	Secor panel, HOH 15, insulation thickness 17mm
UFH-DRY-1617-200F	800x1175x17	0,242 m <sup>2</sup> K/W	Secor panel, HOH 20, insulation thickness 17mm
UFH-DRY-1625-100F	800x1175x25	0,533 m <sup>2</sup> K/W	Secor panel, HOH 10, insulation thickness 25mm
UFH-DRY-1625-150F	750x1175x25	0,605 m <sup>2</sup> K/W	Secor panel, HOH 15, insulation thickness 25mm
UFH-DRY-1625-200F	800x1175x25	0,609 m <sup>2</sup> K/W	Secor panel, HOH 20, insulation thickness 25mm
UFH-DRY-1630-150F	750x1175x30	0,7483 m <sup>2</sup> K/W	Secor panel, HOH 15, insulation thickness 30mm
UFH-DRY-FTAPE	50x2500		Secor adhesive aluminium tape
UFH-DRY-GLUEF	1kg		Secor PU glue

## INSTALLATION

### PREPARATION

Make sure that the subfloor is clean, level and dry.

#### Use the following tools:

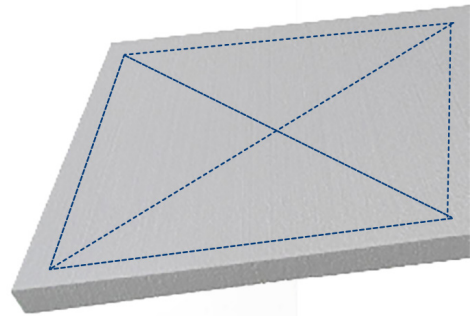
- ▶ Styrofoam cutter – to cut the panels to size.
- ▶ Ruler with metal edge – to make straight cuts in the panels.
- ▶ Ruler and felt-tip pen – to measure and mark.
- ▶ Router - for routing the pipes where necessary.
- ▶ Gloves – to protect your hands against sharp aluminium corners and edges.
- ▶ Knee pads – to protect your knees and not make any impressions in the panels.
- ▶ Flat-soled shoes – e.g. sneakers, to not make any impressions in the panels.

## PROCEDURE

Make sure that the subfloor is dry, level and free of dust. Always work from the corners of the room towards a door or another room. First place the Secor panels on the subfloor without gluing them, in accordance with the laying plan. Afterwards, you can glue the panels. Depending on the floor finish, a different installation method is required.

### Tiles, self-levelling top coat and cast floor

Henco recommends the use of the Henco Secor PU glue. Apply the glue to the back of the panel. Do this by smearing the edges and connecting the corners crosswise according to the picture. Glue the panel to the surface and make sure there is a good adhesion. The Henco Secor PU glue expands slightly, do not exceed the recommended amount of 150g / m<sup>2</sup>. After curing you can remove the excess glue with a polyurethane thinner. After 30 minutes you can walk on the panel.



### Floating floor finish

If a floating floor finish (parquet or laminate) is installed, it is sufficient to fix the Secor panels to the surface with a firm double-sided tape. The Secor panels can be screwed down if they are installed on a wooden subfloor.

### Carpet or vinyl (PVC)

In case of a carpet or PVC floor, the Secor panels are mounted with double-sided tape. After the installation of the pipes a layer of plasterboard is placed with a minimum thickness of 10 mm.

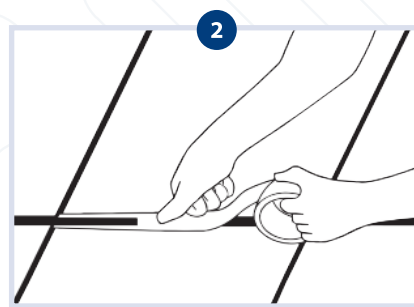
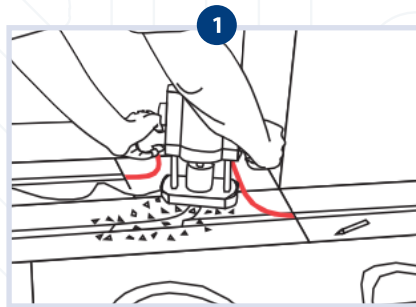
## CUTTING A NEW CHANNEL

If necessary, cut a new channel to comply with the laying plan. You can easily do so with a router.

Draw the channel trajectory with a pen. Pipe bends should not be too sharp (the minimum bending radius for a 16 mm pipe is 90 mm).

Use a router to cut a 16 mm channel **1**.

Thoroughly remove any residue. Fold aluminium tape in the channel **2**.



## LAYING THE PIPES

Make sure that all channels are clean.

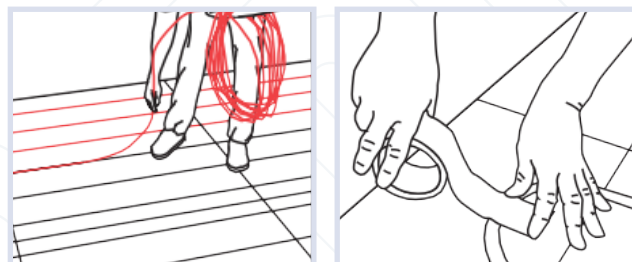
Lay the pipes with two persons. One person guides the pipe, while the other lays the pipe in the channel.

Apply adhesive tape where the pipe makes a bend or where there is a wide joint between the panels.

## INSTALLATION OF THE FLOOR FINISH

The floor finish can be placed after the underfloor heating has been installed and a pressure test has been performed. Turn off the underfloor heating in time, before installing the floor finish. A high temperature may affect the drying time of the glue. Always follow the glue manufacturer's instructions.

Make sure that the surface is level, clean and dry. Do not use solvents. Check one last time whether the panels are properly attached. If necessary, use extra screws or cut off any loose pieces and glue them again.



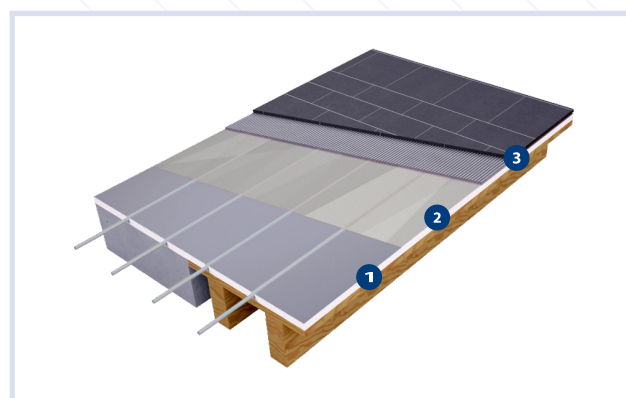
### TILES, SELF-LEVELLING TOP COAT AND CAST FLOOR

- 1 SECOR-PANEL
- 2 PRIMER
- 3 GLUE

If you are installing **tiles**, a primer must be applied to the Secor panels. Some examples of suitable primers are Eurocol Multiprimer 051 and 044. Place this according to the manufacturer's instructions. After this primer is dry, you can start tiling. Use a tile adhesive with classification C2TE S2 for this purpose. Follow the manufacturer's instructions for applying the adhesive. Do not use tiles smaller than 15 x 15 cm. Smaller tiles or mosaics will require a load-distributing board or additional screed to prevent point loading.

When using a **self-levelling top coat**, a primer is first applied to the Secor panels. Follow the manufacturer's instructions for this. After the primer is dry, a self-levelling top coat is applied with a minimum thickness of 5mm.

If you opt for a **cast floor**, a self-levelling top coat is applied first or a gypsum fiberboard is used. Follow the instructions for the leveler as described above. The gypsum fiberboard is glued to the Secor panels. For this, use a primer first for adhesion of the glue. The gypsum fiber boards have a minimum thickness of 10 mm. The self-levelling floor is placed on top of these gypsum fiber boards.



### FLOATING FLOORS

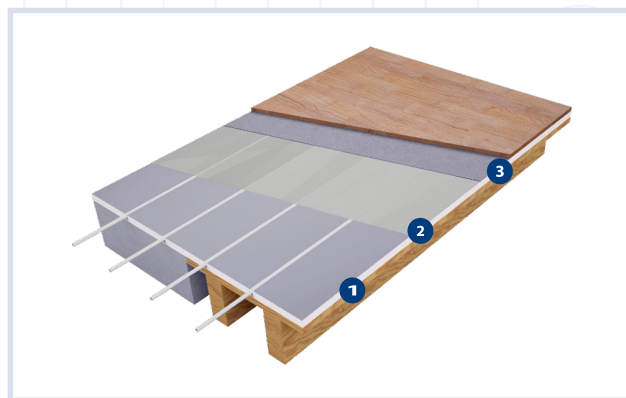
- 1 SECOR-PANEL
- 2 PE-FILM
- 3 FELT

#### Solid wood (floor boards) or laminate

Follow the manufacturer's instructions to lay your parquet or laminate; It is recommended to apply a PE film and felt undercoat first, before laying the wood floor finish. Always place the floor finish perpendicular to the direction of the pipes to ensure maximum heat emission.

#### Vinyl floor covering and carpets

Vinyl or carpet finishes cannot be installed directly on the panels. First use a gypsum fibre board or chipboard with a minimum thickness of 10 mm.



### SECOR WALL HEATING

- 1 SECOR-PANEL
- 2 WOODEN OR METAL PROFILES

Secor panels can be used as wall heating. Wooden or metal profiles are placed between the panels. On these profiles gypsum fiber boards are attached to finish the wall. The manufacturer of the gypsum fiber boards will advise you on the distance between the gypsum fiber board and the wall heating.

